

Giulia

Designed by Gianfranco Frattini, (1957) 2016
Cat. Armchairs



Giulia

Designed by Gianfranco Frattini, (1957) 2016
Cat. Armchairs



Giulia

Designer: Gianfranco Frattini
Year: (1957) 2016

A reissue of an original 1957 design by Gianfranco Frattini, the shape and spirit of Giulia are as contemporary today as ever. The armchair with footrest is the perfect combination of beauty, comfort and harmony. The shell, which echoes and renews the shapes of a classic reading chair, stands on a wooden base, essential in defining the aesthetic of this design classic, which Frattini aptly dedicated to the wife of his teacher and guide, Gio Ponti.

Developed by Tacchini in Italy

Dimensions (cm)

Cod. OGIU86



W 86 D 95 cm
H 104 H seat 43 cm

Cod. OGIUP57



W 57 D 51 cm
H 42 cm

Non-removable covers

CAD Files:
3D (.dwg, .3ds)
2D (.dwg)

Download CAD files at tacchini.it/en/downloads

Giulia

Designed by Gianfranco Frattini, (1957) 2016
Cat. Armchairs

Materials description

Internal frame: 30 mm thick fir plywood.

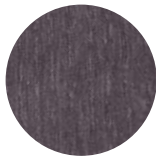
Padding: differentiated-density polyurethane foam.

Base: open pore stained solid ash wood.

Base



T43
Dark Walnut

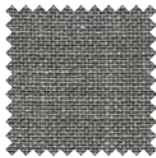


T49
Grey

Suggested upholsteries



Early



Thesium

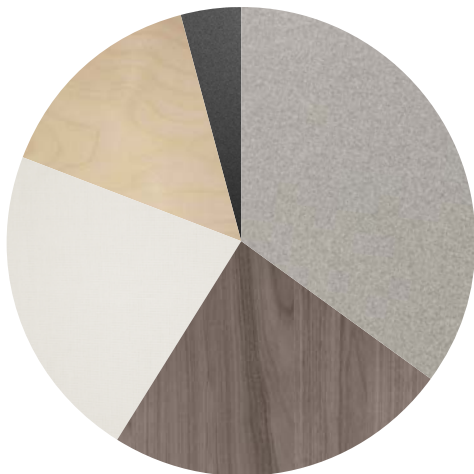


Divina



Super Leather

Materials informations



Polyurethane foam	35%
Fir plywood	24%
Upholstery	22%
Ash wood	15%
Elastic belts	4%

Polyurethane

Flexible expanded polyurethane is a solid elastic polymeric material with open cell structure. It is a non-toxic material and above all free from ozone-damaging components. Production and processing of the polyurethane we use meet the objectives of the new policy of ensuring the protection of human health and of the environment. We focus in particular on the choice and use of the types of density of polyurethane suitable for preserving over the years the features of load capacity, elasticity and resilience. For products used in public spaces flame-retardant expanded polyurethane is chosen, tested and certified according to international regulations.

Foam

Similar to polyurethane, foam is used for moulding products with special and organic shapes. It is a material which is highly resistant to ageing and flames. Its appearance at the edges is clean, compact. All products made with a foam structure offer a solution with extraordinary comfort.

Wood

Wood is a renewable raw material. All products derived from wood, such as for example plywood, have the advantage of being able to be machined more easily than wood and do not deform. The timber we use – solid or plywood – comes mainly from European and Russian forests and is seasoned to specific values of humidity with tests. Most of the structures of the products in the collection have a frame in solid pine or ash, or in beech or poplar plywood.

Elastic belts

The elastic belt used on the seats of our upholstered products is a component to be chosen with care in order to ensure adequate elasticity and springing for the dimension and the structure of the product. We use plaited elastic webbing to add greater comfort and resistance to weight stresses.

Recyclability

All Giulia elements are 100% recyclable when fully separated. Tacchini undertakes on-going research and development, with efforts made to introduce products which are a perfect combination of function and safety without jeopardizing the final design of the same articles. During production attempts are made to minimize noise and emission levels and to reduce rejects as far as possible. All the single materials which make up the production process, once disassembled, can be reused several times, maintaining a high quality standard.

Packaging

Giulia element is dispatched already assembled. It is protected by tissue paper and cellophane to protect the covering from dust and direct contact with the cardboard. The product is packed in rigid cardboard boxes suitable for world export. Manufacture of the packaging observes the criteria for recovery both as recycling and energy recovery and composting.

Once a product reaches the end of its life cycle it has to be eliminated.

To discover more about Tacchini environmental policy please visit: www.tacchini.it

Giulia

Designed by Gianfranco Frattini, (1957) 2016
Cat. Armchairs



Gianfranco Frattini

Gianfranco Frattini was born in Padua, Italy, on 15th May, 1926. He graduated in Architecture, at the Politecnico, Milan, in 1953. At the end of the 50's, he is one of the founders of ADI, Association for Industrial Design. Frattini opened his own studio in Milan, after working in the office of his teacher and mentor Gio Ponti. In few years, he became an industrial designer, well-known worldwide. Among his many successful projects, in 1956 designed the chair model 849, nominated for the "Compasso d'Oro" Prize. Now, this armchair, which takes shapes from the original design, is proposed by Tacchini with the name of "Agnese".

Other products by Pearson Lloyd:
Agnese, Gio, Lina, Oliver, Sesann,
Sesann Armchair.