

Crystal
Armchair

Designed by Pearson Lloyd, 2011
Cat. Armchairs

 Tacchini



CASA
DESIGN
GROUP

living
outdoor
contract

460 Harrison Ave Boston MA 02118 | T617-654-2974 | casadesigngroup.com



Crystal Armchair

Designer: Pearson Lloyd
Year: 2011

Oblique corners reminding of ancient obelisk shapes, creating an architectural play of light and shadow. Full volumes seem to float above the floor, on a hidden base. Crystal is a collection of sofas and armchairs away from ordinary standards and clichés which gives birth to a suspended and dynamic effect with no need of aesthetical devices. It's just about smart and absolute simplicity.

Developed by Tacchini in Italy

Dimensions (cm)

Cod. OCRY96
/OCRYG96



W 96 D 80 H 68 cm
Seat H 43 cm
Fixed (OCRY96) or
swivel (OCRYG96)
base

Non-removable
covers

CAD Files:
3D (.dwg, .3ds)
2D (.dwg)

Download CAD
files at [tacchini.it/
en/downloads](http://tacchini.it/en/downloads)

Materials description

Internal frame: poplar plywood 18 mm with elastic belts.

Base: on plastic glides or also available with black embossed powder-coated metal swivel plate 8 mm thick.

Padding: differentiated - density polyurethane foam.

Upholstery: non removable cover.

Suggested upholsteries



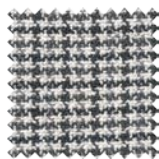
Bellis



Early



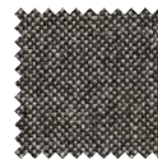
Erika



Leonotis

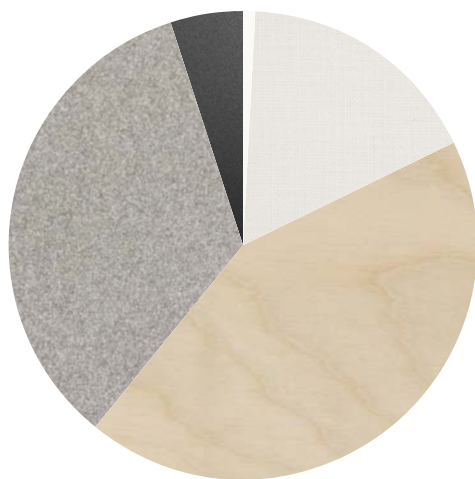


Silene



Trifolium

Materials informations



Birch plywood	43%
Polyurethane	34%
Upholstery	17%
Elastic belts	5%
Plastic (feet)	1%

Polyurethane

Flexible expanded polyurethane is a solid elastic polymeric material with open cell structure. It is a non-toxic material and above all free from ozone-damaging components. Production and processing of the polyurethane we use meet the objectives of the new policy of ensuring the protection of human health and of the environment. We focus in particular on the choice and use of the types of density of polyurethane suitable for preserving over the years the features of load capacity, elasticity and resilience. For products used in public spaces flame-retardant expanded polyurethane is chosen, tested and certified according to international regulations.

Elastic belts

The elastic belt used on the seats of our upholstered products is a component to be chosen with care in order to ensure adequate elasticity and springing for the dimension and the structure of the product. We use plaited elastic webbing to add greater comfort and resistance to weight stresses.

Wood

Wood is a renewable raw material. All products derived from wood, such as for example plywood, have the advantage of being able to be machined more easily than wood and do not deform. The timber we use – solid or plywood – comes mainly from European and Russian forests and is seasoned to specific values of humidity with tests. Most of the structures of the products in the collection have a frame in solid pine or ash, or in beech or poplar plywood.

Metal

The need to combine complex yet lightweight shapes with resistant materials necessarily involves the use of metals such as steel and aluminium. products in polyurethane foam are made with an inner steel frame for adding strength to the structure. The bases are in tubular metal which can be chromed with a gloss or satin finish or painted with epoxy powders.

Recyclability

All Crystal Armchair elements are 100% recyclable when fully separated. Tacchini undertakes on-going research and development, with efforts made to introduce products which are a perfect combination of function and safety without jeopardizing the final design of the same articles. During production attempts are made to minimize noise and emission levels and to reduce rejects as far as possible. All the single materials which make up the production process, once disassembled, can be reused several times, maintaining a high quality standard.

Packaging

Crystal Armchair element is dispatched already assembled. It is protected by tissue paper and cellophane to protect the covering from dust and direct contact with the cardboard. The product is packed in rigid cardboard boxes suitable for world export. Manufacture of the packaging observes the criteria for recovery both as recycling and energy recovery and composting.

Once a product reaches the end of its life cycle it has to be eliminated.

To discover more about Tacchini environmental policy please visit: www.tacchini.it

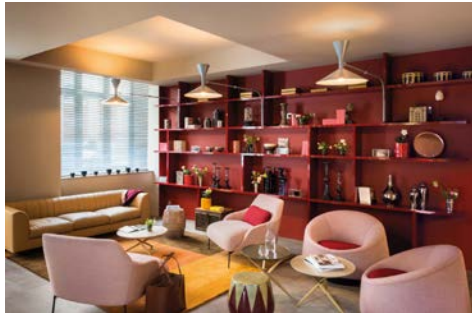


Pearson Lloyd

Pearson Lloyd is one of the leading names in contemporary British design, and this multidisciplinary studio works in a wide range of sectors: from furnishing to public spaces to brand development. Established by Luke Pearson and Tom Lloyd in 1997, the studio has received numerous acknowledgements and accolades in both Europe and the United States. The British design duo write regularly for major design magazines, as well as acting as “visiting lecturers” at the École Cantonale d’Art in Lausanne.

Other products by Pearson Lloyd: Crystal, Eddy, Fixie, Galleria, Ischia, Nebula, Nebula Interiors, Nebula Poissons, Polar, Polar Armchair, Polar Perch, Polar Table, Quilt, Stone.

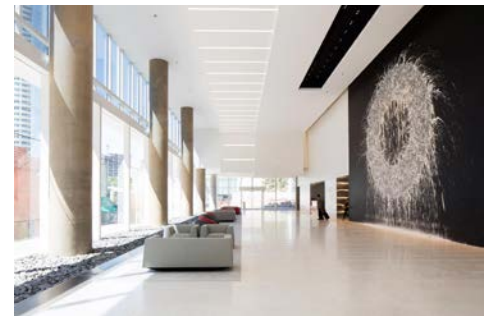
Tacchini Projects:



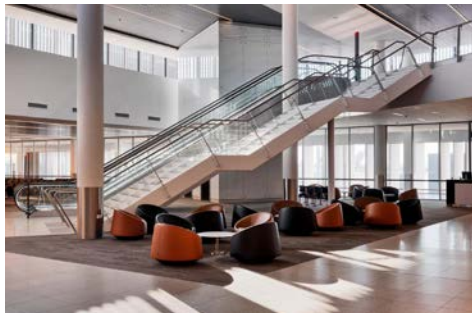
Okko Hotel Lyon
(Lyon, France)



Hall Arts
(Dallas, United States)



Hall Arts
(Dallas, United States)



Perth Airport
(Perth, Australia)



Perth Airport
(Perth, Australia)



Okko Hotel Grenoble
(Grenoble, France)

Tacchini Projects:



Changi Airport
(Singapore, Singapore)



Changi Airport
(Singapore, Singapore)