

---

# Twelve C

---

*Massimo Castagna*  
2018



# Twelve C

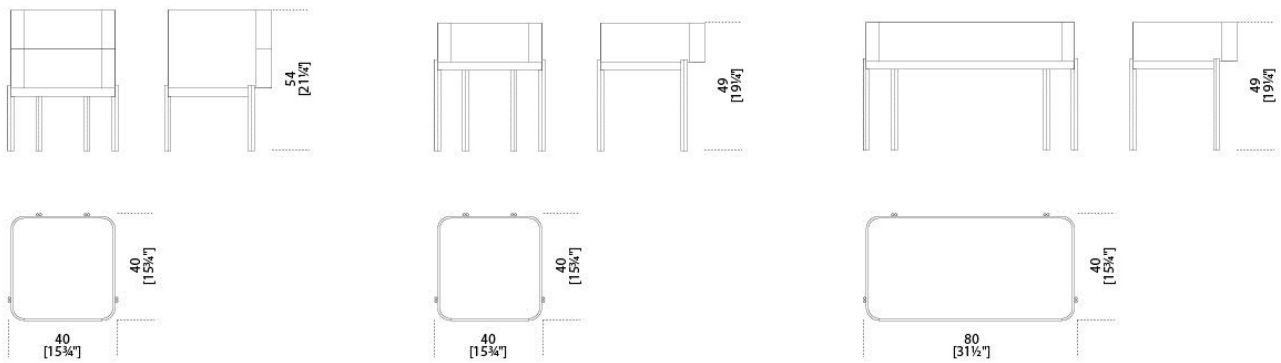
Massimo Castagna , 2018

Comodino in frassino laccato nero poro aperto. Piano in cristallo 6mm decorato a mano nella finitura Craquelé oppure retroverniciato liquirizia brillante. Struttura in ottone brunito a mano.

Black open pore lacquered ash night table. 6mm hand decorated craquelé or bright liquorice painted glass top. Hand burnished brass structure.

Dimensioni / Sizes  
Cm (W x D x H)  
A 40 x 40 x 49  
B 40 x 40 x 54  
C 80 x 40 x 49

Inches (W x D x H)  
A 15¾" x 15¾" x 19½"  
B 15¾" x 15¾" x 21½"  
C 31½" x 15¾" x 19½"



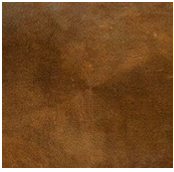
---

# Twelve C

## *Finiture / Finishes*

---

### *Metallo / Metal*



*Ottone brunito  
a mano  
Hand  
burnished  
brass*

---

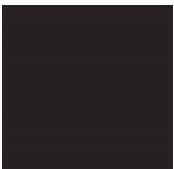
### *Legno / Wood*



*Nero poro  
aperto (Layer)  
Black open pore  
(Layer)*

---

### *Cristallo / Glass*



*Liquirizia  
brillante  
Bright liquorice*



*Cristallo  
Craquelé  
Craquelé glass*