
Eris

Massimo Castagna
2017



Eris

Massimo Castagna , 2017

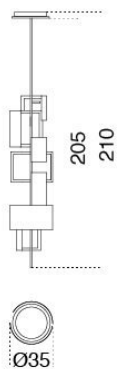
Lampada a sospensione a LED con struttura verniciata nero bronzato e fasce in ottone lucido, satinato, brunito a mano e cromo nero.

Hanging lamp with LED light with black bronzed painted structure and bright, satin, hand-burnished brass and black chrome parts.

Dimensioni / Sizes
Cm
Ø 35 x 210h

LED 32W - 108 lm/W, 3000K

Inches
Ø 14" x 82¾"h



Metallo / Metal



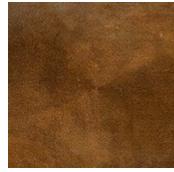
Cromo nero
Black chrome



Ottone lucido
Bright brass



Ottone satinato
Satin brass



Ottone brunito
a mano
Hand
burnished
brass



Nero bronzato
Bronzed black
