

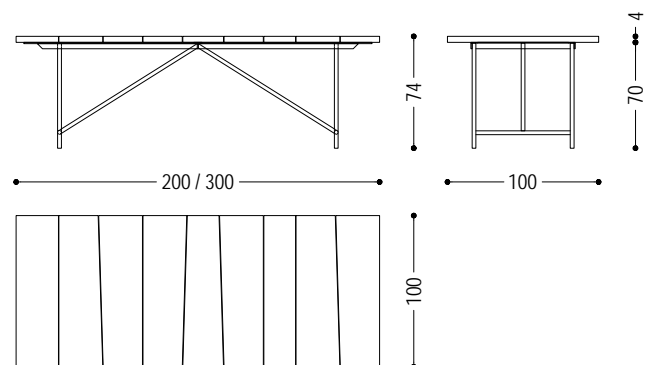


Table with top in solid wood, composed of asymmetric lists with gaps; trestle base with an essential and linear shape, made of hollow tubular iron.

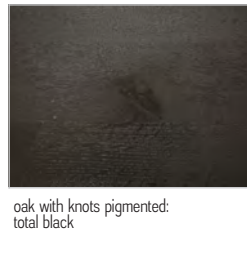
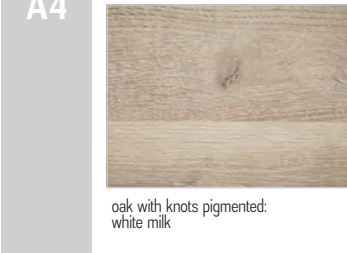
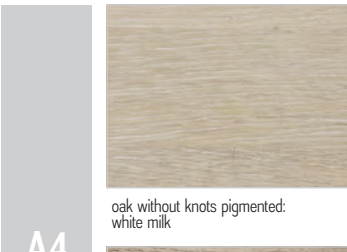
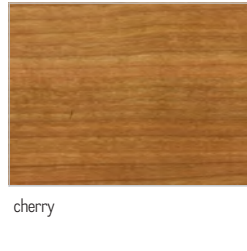
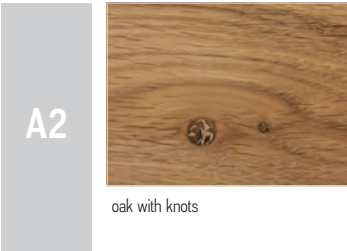
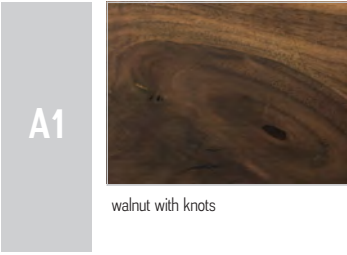
CODE	SIZE	BASE	A1	A2	A4
NERVI-1	W.200 x D.100 x H.74	B2	■	■	■
		B3	■	■	■
NERVI-2	W.220 x D.100 x H.74	B2	■	■	■
		B3	■	■	■
NERVI-3	W.240 x D.100 x H.74	B2	■	■	■
		B3	■	■	■
NERVI-4	W.260 x D.100 x H.74	B2	■	■	■
		B3	■	■	■
NERVI-5	W.280 x D.100 x H.74	B2	■	■	■
		B3	■	■	■
NERVI-6	W.300 x D.100 x H.74	B2	■	■	■
		B3	■	■	■

AVAILABLE FINISHES:

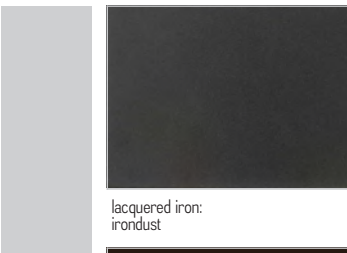
- A1:** walnut with knots
- A2:** oak with knots, cherry
- A4:** oak without knots pigmented: white milk
oak with knots pigmented: white milk, total black
- B2:** lacquered iron: iron dust, RAL (only selected colours)
- B3:** lacquered iron matt brushed effect: aged bronze, stainless steel, titanium



WOOD



IRON



NERVI TABLE | AVAILABLE FINISHES

B3



lacquered iron, matt brushed effect:
aged bronze



lacquered iron, matt brushed effect:
stainless steel



lacquered iron, matt brushed effect:
titanium