



Table with top made of solid wood in glued lists, characterised by one leg passing through the top surface, made from a section of a tree trunk. Version with rectangular top and floor plate in iron.

CODE	SIZE	PLATE	A1	A2
NAT-BOSSEXERETTGS1	W.200 x D.100 x H.73,5	B2	■	■
		B3	■	■
NAT-BOSSEXERETTGS2	W.220 x D.100 x H.73,5	B2	■	■
		B3	■	■
NAT-BOSSEXERETTGS3	W.240 x D.110 x H.73,5	B2	■	■
		B3	■	■
NAT-BOSSEXERETTGS4	W.260 x D.110 x H.73,5	B2	■	■
		B3	■	■

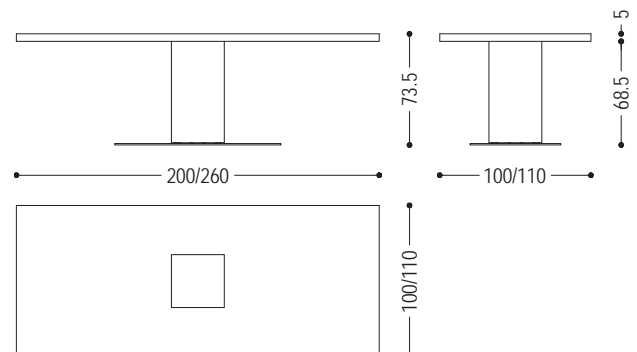
AVAILABLE FINISHES:

A1: walnut with knots

A2: oak with knots

B2: lacquered iron: iron dust, RAL (only selected colours)

B3: lacquered iron matt brushed effect: aged bronze, stainless steel, titanium



WOOD

A1



walnut with knots

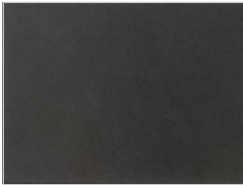
A2



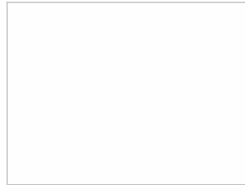
oak with knots

IRON

B2



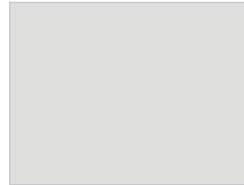
lacquered iron:
iron dust



ferro laccato:
RAL - 1013_OYSTER WHITE



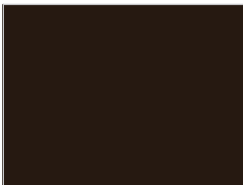
ferro laccato:
RAL - 3020_TRAFFIC RED



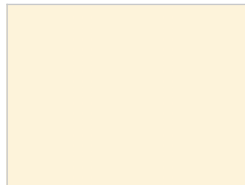
ferro laccato:
RAL - 7035_LIGHT GREY



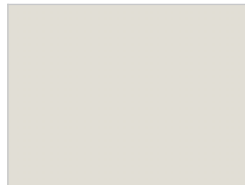
ferro laccato:
RAL - 7037_DUSTY GREY



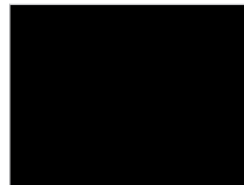
ferro laccato:
RAL - 8019_GREY BROWN



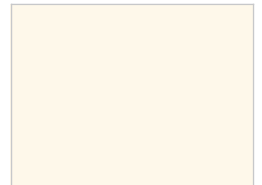
ferro laccato:
RAL - 9001_CREAM WHITE



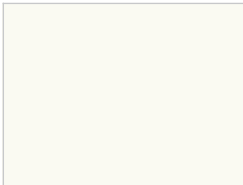
ferro laccato:
RAL - 9002_GREY WHITE



ferro laccato:
RAL - 9005_JET BLACK

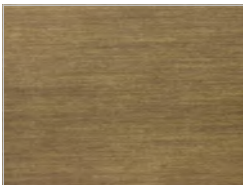


ferro laccato:
RAL - 9010_PURE WHITE

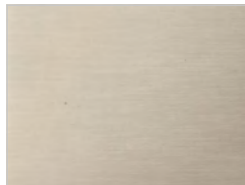


ferro laccato:
RAL - 9016_TRAFFIC WHITE

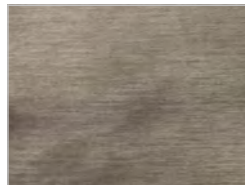
B3



lacquered iron, matt brushed effect:
aged bronze



lacquered iron, matt brushed effect:
stainless steel



lacquered iron, matt brushed effect:
titanium