



RIVULET (INDOOR + OUTDOOR)

design Junpei & Iori Tamaki

Chair available for indoor and outdoor.

Indoor version: in solid ash wood Ø30mm with acrylic painting finish natural colour and with acrylic water-based finish, or charcoal-dyed, with acrylic base and acrylic painting finish or in tubular steel Ø22mm lacquered with epoxy powder coating gunmetal grey colour. Seat chassis in multilayer sprung with coated rubber elastic straps, padded in polyurethane foam covered with acrylic fibre layers.

Outdoor version: with tubular frame Ø22mm in Stainless Steel AISI 316 lacquered with epoxy powder coating gunmetal grey colour; seat chassis in plywood for outdoor use, sprung with coated rubber elastic straps, padded in open cell structure polyurethane foam DRYFEEL S covered with fibres for outdoor and with a waterproof fabric cover. Decorative weave for backrest and armrests with profile in hide, cellulose cord (both indoor use only) or waxed rope (indoor/outdoor use), in the colours of collection. Non-removable seat upholstery in fabric or leather; for the outdoor version, in outdoor fabrics only. Floor support secured by black PVC feet.

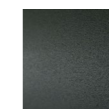
Structure



Natural
Ash
(Indoor)



Charcoal-dyed
Ash
(Indoor)



Steel with
Gunmetal Grey
Coating
(In-Outdoor)

Weaving



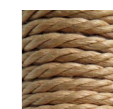
Hide Profile
col. Natural
(Indoor)



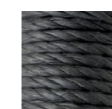
Hide Profile
col. Black
(Indoor)



Hide Profile
col. Cognac
(Indoor)



Cellulose Rope
Profile
col. Natural
(Indoor)



Cellulose Rope
Profile
col. Black
(Indoor)



Waxed Rope
Profile
col. Orange
(In-Outdoor)



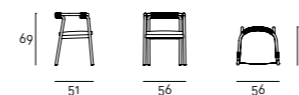
Waxed Rope
Profile
col. Grey
(In-Outdoor)



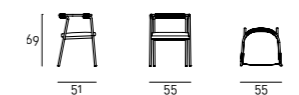
Waxed Rope
Profile
col. Black
(In-Outdoor)

Technical Drawings

Indoor



Indoor/Outdoor



—
Rivulet chair with structure in natural ash
and woven in black hide profile

