

TUSCANA NEST OF TABLES



DIMENSIONS (CM):

(A) Ø40 X H 50

(B) Ø60 X H 55

(C) Ø75 X H 45

SPECIFICATIONS

TABLE TOP: Italian porcelain stoneware (1.2cm) | Available in 17 colours.
Italian marble top (3cm) | Available in 2 colours & 3 edge finishes.

FRAME & LEGS: Solid kiln-dried Iroko wood treated with a highly UV protective, weather-resistant and scratch-resistant finish available in 11 colours.

FEET: Protective rubber base

ACCESSORIES: All weather cover

* All sizes are approximate

TUSCANA 40 - SMALL



DIMENSIONS (CM):
Ø40 X H 50

SPECIFICATIONS

TABLE TOP: Italian porcelain stoneware (1.2cm) | Available in 17 colours.
Italian marble top (3cm) | Available in 2 colours & 3 edge finishes.

FRAME & LEGS: Solid kiln-dried Iroko wood treated with a highly UV protective, weather-resistant and scratch-resistant finish available in 11 colours.

FEET: Protective rubber base

ACCESSORIES: All weather cover

* All sizes are approximate

TUSCANA 60 - MEDIUM



DIMENSIONS (CM):
Ø60 X H 55

SPECIFICATIONS

TABLE TOP: Italian porcelain stoneware (1.2cm) | Available in 17 colours.
Italian marble top (3cm) | Available in 2 colours & 3 edge finishes.

FRAME & LEGS: Solid kiln-dried Iroko wood treated with a highly UV protective, weather-resistant and scratch-resistant finish available in 11 colours.

FEET: Protective rubber base

ACCESSORIES: All weather cover

* All sizes are approximate

TUSCANA 75 - LARGE



DIMENSIONS (CM):
Ø75 X H 45

SPECIFICATIONS

TABLE TOP: Italian porcelain stoneware (1.2cm) | Available in 17 colours.
Italian marble top (3cm) | Available in 2 colours & 3 edge finishes.

FRAME & LEGS: Solid kiln-dried Iroko wood treated with a highly UV protective, weather-resistant and scratch-resistant finish available in 11 colours.

FEET: Protective rubber base

ACCESSORIES: All weather cover

* All sizes are approximate

WOOD FINISHES

Coco Wolf furniture pieces are constructed using the very best modern materials to ensure they deliver maximum durability, whatever the weather. Our preferred choice of wood for frames and legs is Iroko, a hardwood renowned for its strength and extreme durability. It flexes with humidity and temperature, minimising the potential for cracking or splintering. It is naturally resistant to decay and is commonly used in demanding marine environments.



WHITE WASH



NATURAL



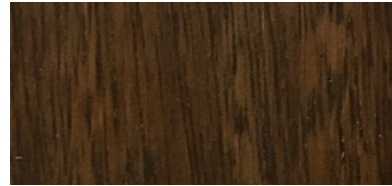
ALPINE WASH



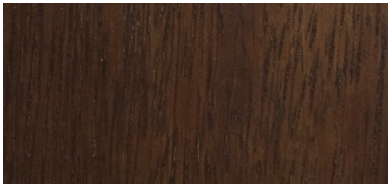
ALPINE



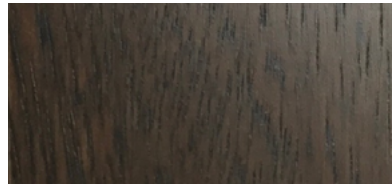
BLONDE



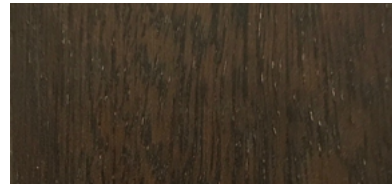
LIGHT TOBACCO



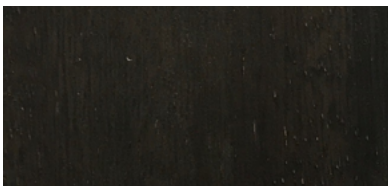
SEPIA



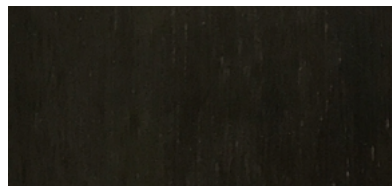
CINDER



BLACK MAGIC



DARK TOBACCO



EBONISED

These colours are for reference only and are an approximation of the true colours. Samples will be sent out for sign off. Please note, for the 'Natural' finish, as Iroko wood is a natural material, the grain and shades of colour vary, this is not a defect but rather a natural beauty of working with solid wood.

* All sizes are approximate

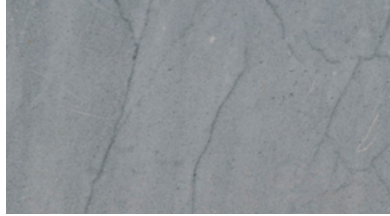
MARBLE FINISHES

ITALIAN MARBLE

High-quality marble sourced from Italy is both beautiful and elegant while being extremely hard-wearing and durable. The honed surface is coated with a spill-resistant sealant perfect for both outdoor and indoor use.



CARRARA



BARDIGLIO



SHARK NOSE



BEVELLED



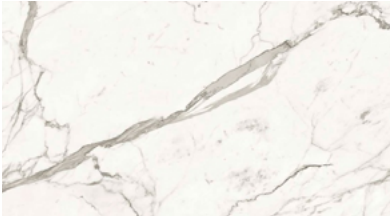
STRAIGHT



* All sizes are approximate

PORCELAIN FINISHES

The hard-wearing and versatile qualities of porcelain stoneware make it an ideal choice for our table collection. Impressive surface hardness withstands wear and scratching while being resistant to chemicals and colour change.



STATUARIO SUPREMO



CALACATTA PRESTIGIO



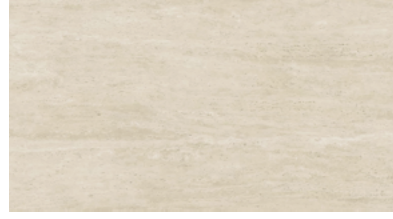
CRYSTAL WHITE



BOOST STONE IVORY



TRAVERTINO SAND



TRAVERTINO PEARL



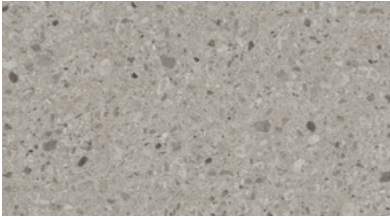
BOOST WHITE



WHITE CLOUD



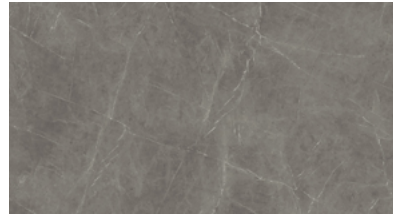
DESERT SOUL



KONE MIX



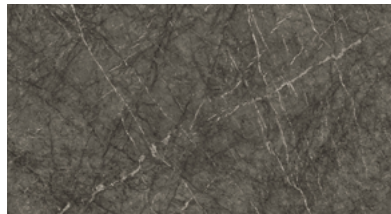
LIGHT GREY STONE



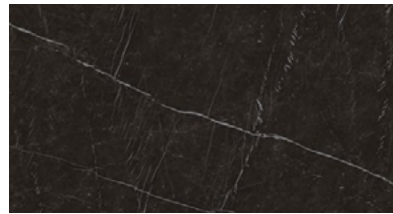
GREY STONE



SOAP STONE



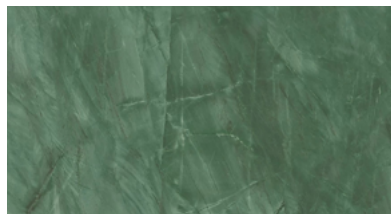
GRIGIO INTENSO



NERO MARQUINA



EXOTIC WAVE



EXOTIC GREEN

* All sizes are approximate