

CORONET DINING CHAIR



DIMENSIONS (CM): W 55 X D 63 X H 76 X SH 48 X SD 48

SPECIFICATIONS

INTERNAL CONSTRUCTION: WBP mortice and tenon joined frame. Integrated drain and marine grade webbing. All exposed wood is Iroko.

CUSHIONS: Patented Peltluxé® fibre cushion interior and padding to seat and frame.

FRAME & LEGS: Solid kiln-dried Iroko wood treated with a highly UV protective, weather-resistant and scratch-resistant finish available in 11 colours.

FEET: Protective nylon glides

FABRICS: Coco Wolf House Collection fabrics or COM (Customer's Own Material) on manufacturer's approval.

FABRIC QUANTITY: 1.5m plain fabric

HANDWOVEN ROPE: Available in 5 colours

ACCESSORIES:

All weather cover

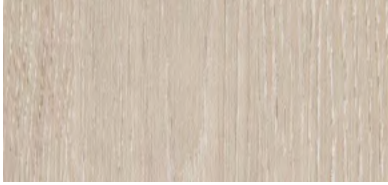
Additional scatter cushions available on request

SCATTER CUSHION IS INCLUDED: 1 x 45 x 45cm (0.75m)

* All sizes are approximate

WOOD FINISHES

Coco Wolf furniture pieces are constructed using the very best modern materials to ensure they deliver maximum durability, whatever the weather. Our preferred choice of wood for frames and legs is Iroko, a hardwood renowned for its strength and extreme durability. It flexes with humidity and temperature, minimising the potential for cracking or splintering. It is naturally resistant to decay and is commonly used in demanding marine environments.



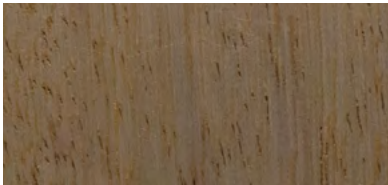
WHITE WASH



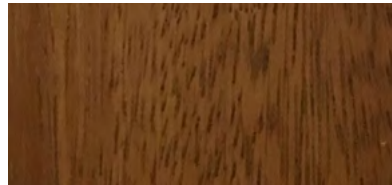
NATURAL



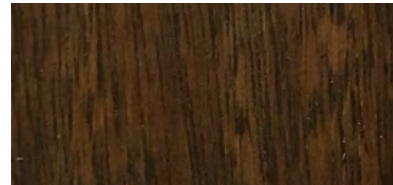
ALPINE WASH



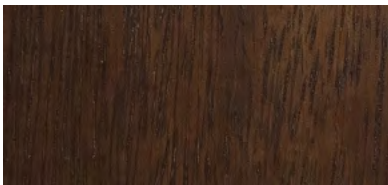
ALPINE



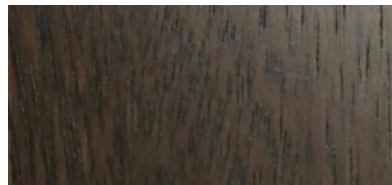
BLONDE



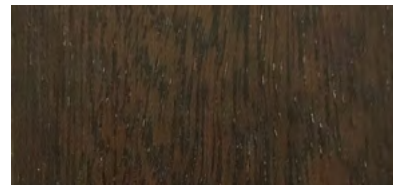
LIGHT TOBACCO



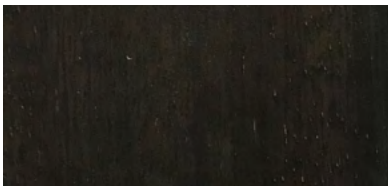
SEPIA



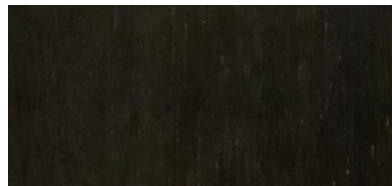
CINDER



BLACK MAGIC



DARK TOBACCO

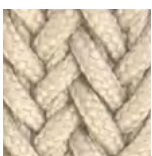


EBONISED

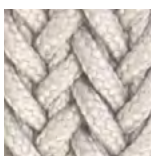
These colours are for reference only and are an approximation of the true colours. Samples will be sent out for sign off. Please note, for the 'Natural' finish, as Iroko wood is a natural material, the grain and shades of colour vary, this is not a defect but rather a natural beauty of working with solid wood.

HANDWOVEN ROPE COLOURS

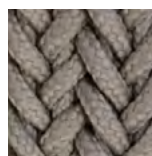
The handwoven rope used in our Coronet collection is specifically made for outdoor use. Marine standard materials result in a product that is highly resistant to the wide range of outdoor elements, including UV rays, incremental weather, abrasion, chlorine, and saltwater. The rope is 100% polyester, has antibacterial properties and is dyed in compliance with OEKO-TEX® regulations and is also completely recyclable.



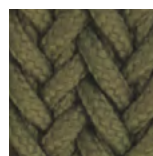
BUFF



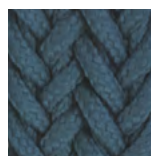
MINERAL



WOLF



SAGE



ROYALE

* All sizes are approximate

IN/OUTDOOR FABRICS

The team at Coco Wolf has curated an exclusive selection of performance fabrics that perfectly complement furniture collections and incorporate advanced fabric technology so it can remain outside all year around.

Fabrics are chosen specifically to suit both contract and residential applications, transforming terraces, gardens, pools, yachts and

CATEGORY A - COCO WOLF COLLECTION

DOLCE - 60% PP - 40% PES 55" / 140CM WIDTH



DOLCE 07



DOLCE 16



DOLCE 80



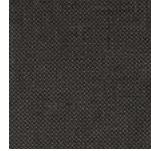
DOLCE 51



DOLCE 45



DOLCE 43



DOLCE 83



DOLCE 53

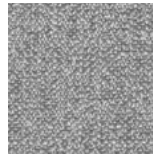
FIJI - 81% PP - 15% PES - 4% PU 55" / 140CM WIDTH



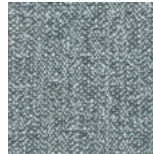
FIJI 07



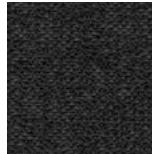
FIJI 16



FIJI 80



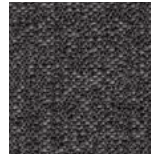
FIJI 43



FIJI 53



FIJI 75



FIJI 83

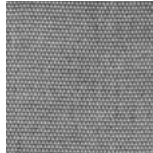
STRADA - 72% PP - 24% PES - 4% PU 55" / 140CM WIDTH



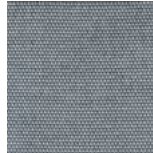
STRADA 07



STRADA 75



STRADA 80



STRADA 43



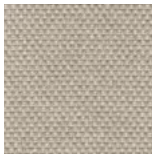
STRADA 29

CATEGORY B - COCO WOLF COLLECTION

BORA BORA - 82% PP - 18% PES 55" / 140CM WIDTH



BORA BORA 99



BORA BORA 08



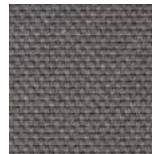
BORA BORA 05



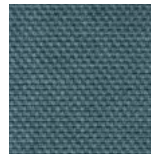
BORA BORA 07



BORA BORA 50



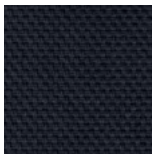
BORA BORA 59



BORA BORA 42



BORA BORA 53



BORA BORA 47

* All sizes are approximate

IN/OUTDOOR FABRICS

CATEGORY C - COCO WOLF COLLECTION

100% SOLUTION DYED ACRYLIC 55" / 140CM WIDTH



VERANDA NATURAL



HOPSACK NATURAL



HOPSACK SAND



STRIE SAND



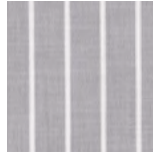
TICKING SAND



VERANDA SILVERBIRCH



HOPSACK SILVERBIRCH



TICKING SILVERBIRCH



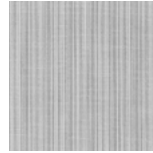
VERANDA DOVE



HOPSACK OCEAN



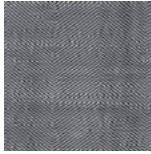
STRIE OCEAN



STRIE FUME



HERRINGBONE INDIGO



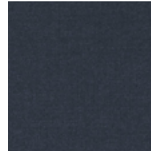
HERRINGBONE MIDNIGHT



TICKING INDIGO



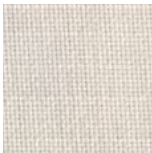
STRIE INDIGO



HOPSACK INDIGO

CATEGORY D - FLAME RETARDANT COCO WOLF COLLECTION

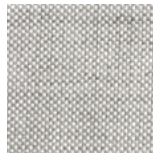
100% TREVIRA 55" / 135CM WIDTH / BS5852 CRIB 5 FOR MEDIUM HAZARD AREAS & IMO PART 7 & 8



FINE CREAM



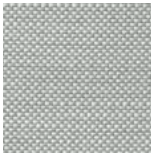
WHITE MIST



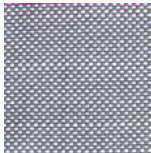
OYSTER



LINEN 20



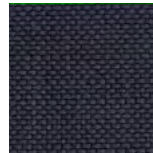
SEAFOAM



POWDER BLUE



PETROL BLUE



GRANITE

* All sizes are approximate

IN/OUTDOOR FABRICS

CATEGORY D - MARIA FLORA

100% SOLUTION DYED ACRYLIC 55" / 140CM WIDTH

5 YEAR WARRANTY

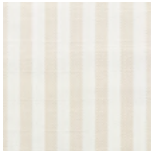


* All sizes are approximate

IN/OUTDOOR FABRICS

CATEGORY D - MARIA FLORA

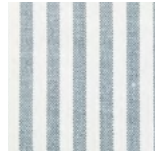
100% SOLUTION DYED ACRYLIC 55" / 140CM WIDTH
5 YEAR WARRANTY



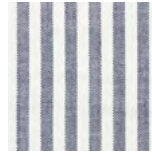
ORDITO 93



ORDITO 102



ORDITO 81

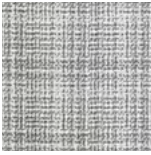


ORDITO 75

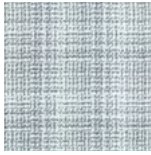


ORDITO 79

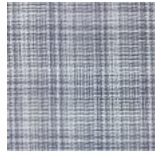
CATEGORY E - COCO WOLF COLLECTION (100% SOLUTION DYED ACRYLIC 55" / 140CM WIDTH)



BATAVIA 79



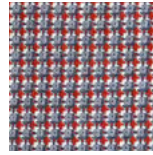
BATAVIA 81



BATAVIA 75



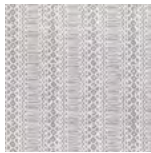
KASIMIRO 81



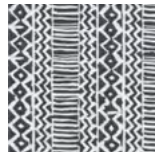
KASIMIRO 75



ZIGZAG
SAND



ZIGZAG
SILVERBIRCH



ZIGZAG INDIGO

CATEGORY F - 3 BEACHES, SUNBRELLA

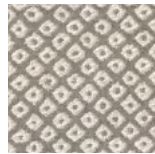
100% SOLUTION DYED ACRYLIC 55" / 140CM WIDTH
5 YEAR WARRANTY



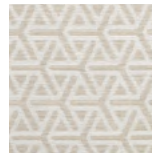
DAZE SAND



DAZE GRAVEL



INK EARTH



ETHNIC SAND



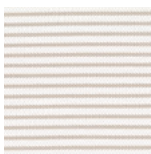
DIAMOND PEARL



SCALLOP PEARL



VERDANT
GRAVEL



DUCK STRIPE
PEARL



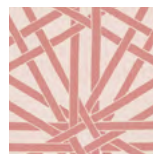
DUCK STRIPE
MORGANITE



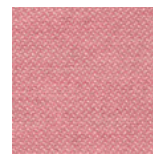
DIAMOND
MORGANITE



SCALLOP
MORGANITE



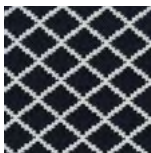
MARRAKESH
MORGANITE



CAMP
MORGANITE



DUCK STRIPE
SAPPHIRE



SAPPHIRE
DIAMOND



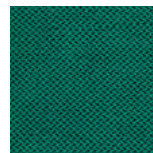
SCALLOP
SAPPHIRE



MARRAKESH
SAPPHIRE



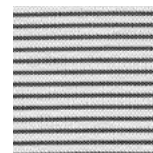
DUCK STRIPE
EMERALD



CAMP EMERALD



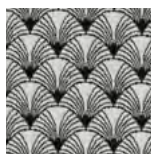
MARRAKESH
EMERALD



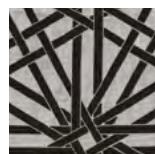
DUCK STRIPE
ONYX



ONYX DIAMOND



SCALLOP ONYX



MARRAKESH
ONYX

* All sizes are approximate