

CORONET BAR STOOL



DIMENSIONS (CM): W 47 X D 53 X H 107 X SH 76 X SD 39

SPECIFICATIONS

INTERNAL CONSTRUCTION: WBP mortice and tenon joined frame. Integrated drain and marine grade webbing. All exposed wood is Iroko.

CUSHIONS: Patented Peltluxé® fibre cushion interior and padding to seat and frame.

FRAME & LEGS: Solid kiln-dried Iroko wood treated with a highly UV protective, weather-resistant and scratch-resistant finish available in 11 colours.

FEET: Protective nylon glides

FOOT PLATE: Brushed stainless steel

FABRICS: Coco Wolf House Collection fabrics or COM (Customer's Own Material) on manufacturer's approval.

FABRIC QUANTITY: 1.6m plain fabric

HANDWOVEN ROPE: Available in 5 colours

ACCESSORIES:

All weather cover

Additional scatter cushions available on request

SCATTER CUSHION IS INCLUDED: 1 x 40 x 40cm (0.5m)

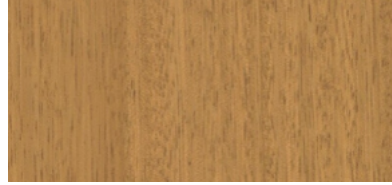
* All sizes are approximate

WOOD FINISHES

Coco Wolf furniture pieces are constructed using the very best modern materials to ensure they deliver maximum durability, whatever the weather. Our preferred choice of wood for frames and legs is Iroko, a hardwood renowned for its strength and extreme durability. It flexes with humidity and temperature, minimising the potential for cracking or splintering. It is naturally resistant to decay and is commonly used in demanding marine environments.



WHITE WASH



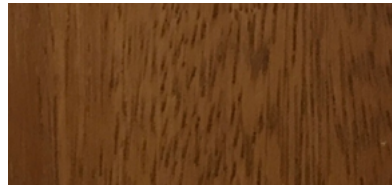
NATURAL



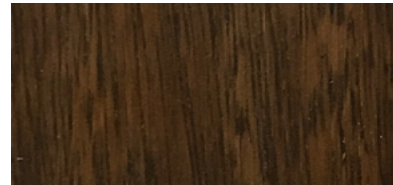
ALPINE WASH



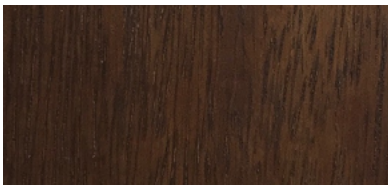
ALPINE



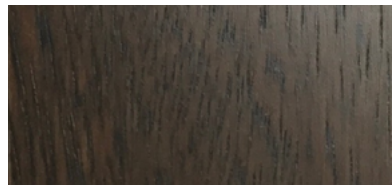
BLONDE



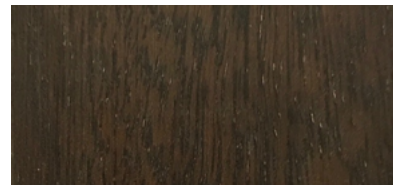
LIGHT TOBACCO



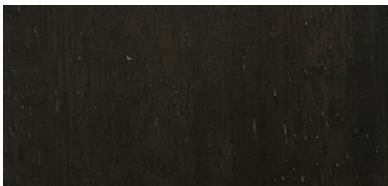
SEPIA



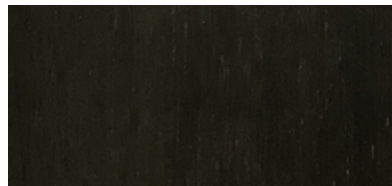
CINDER



BLACK MAGIC



DARK TOBACCO

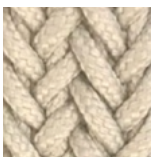


EBONISED

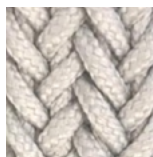
These colours are for reference only and are an approximation of the true colours. Samples will be sent out for sign off. Please note, for the 'Natural' finish, as Iroko wood is a natural material, the grain and shades of colour vary, this is not a defect but rather a natural beauty of working with solid wood.

HANDWOVEN ROPE COLOURS

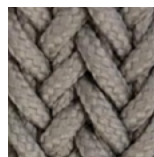
The handwoven rope used in our Coronet collection is specifically made for outdoor use. Marine standard materials result in a product that is highly resistant to the wide range of outdoor elements, including UV rays, incremental weather, abrasion, chlorine, and saltwater. The rope is 100% polyester, has antibacterial properties and is dyed in compliance with OEKO-TEX® regulations and is also completely recyclable.



BUFF



MINERAL



WOLF



SAGE



ROYALE

* All sizes are approximate

IN/OUDOOR FABRICS

The team at Coco Wolf has curated an exclusive selection of performance fabrics that perfectly complement furniture collections and incorporate advanced fabric technology so it can remain outside all year around.

Fabrics are chosen specifically to suit both contract and residential applications, transforming terraces, gardens, pools, yachts and living areas - indoor and out - into exceptional spaces. Our goal is to create furniture that looks the part, season after season.

CATEGORY A - COCO WOLF COLLECTION

DOLCE - 60% PP - 40% PES 55" / 140CM WIDTH

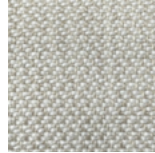
BS5852 Source 0/ EN 1021 Part 1



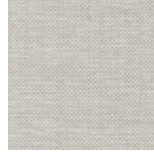
FORTEZZA 101
38/2



FORTEZZA 116
38/3



FORTEZZA 116
79/1



DOLCE 07



DOLCE 16



DOLCE 80



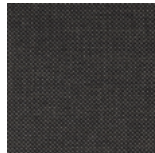
DOLCE 51



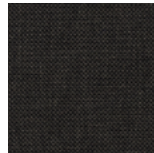
DOLCE 45



DOLCE 43



DOLCE 83



DOLCE 53

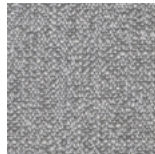
FIJI - 81% PP - 15% PES - 4% PU 55" / 140CM WIDTH



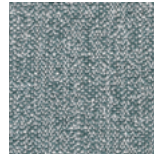
FIJI 07



FIJI 16



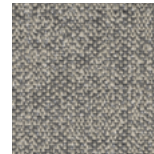
FIJI 80



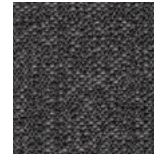
FIJI 43



FIJI 53



FIJI 75



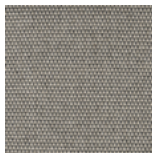
FIJI 83

STRADA - 72% PP - 24% PES - 4% PU 55" / 140CM WIDTH

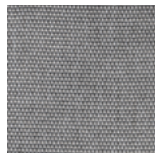
BS5852 Source 0/ EN 1021 Part 1



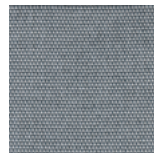
STRADA 07



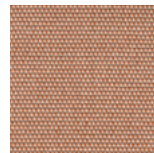
STRADA 75



STRADA 80



STRADA 43



STRADA 29

CATEGORY B - COCO WOLF COLLECTION

BORA BORA - 82% PP - 18% PES 55" / 140CM WIDTH

BS5852 Source 0/ EN 1021 Part 1



BORA BORA 99



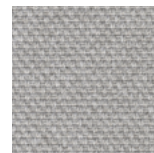
BORA BORA 08



BORA BORA 05



BORA BORA 07



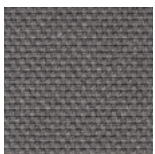
BORA BORA 50



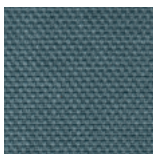
FORTEZZA 356
39/1



FORTEZZA 356
79/2



BORA BORA 59



BORA BORA 42



BORA BORA 53



BORA BORA 47

* All sizes are approximate

IN/OUTDOOR FABRICS

CATEGORY C - COCO WOLF COLLECTION

100% SOLUTION DYED ACRYLIC 55" / 140CM WIDTH



CATEGORY D - FLAME RETARDANT COCO WOLF COLLECTION

100% TREVIRA 55" / 135CM WIDTH / 5 YEAR WARRANTY
BS5852 CRIB 5 FOR MEDIUM HAZARD AREAS & IMO PART 7 & 8



* All sizes are approximate

IN/OUTDOOR FABRICS

CATEGORY D - MARIA FLORA

100% SOLUTION DYED ACRYLIC 55" / 140CM WIDTH

5 YEAR WARRANTY



* All sizes are approximate

IN/OUTDOOR FABRICS

CATEGORY D - MARIA FLORA

100% SOLUTION DYED ACRYLIC 55" / 140CM WIDTH

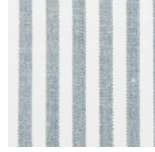
5 YEAR WARRANTY



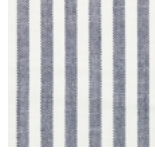
ORDITO 93



ORDITO 102



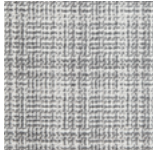
ORDITO 81



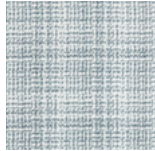
ORDITO 75



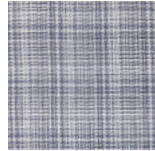
ORDITO 79



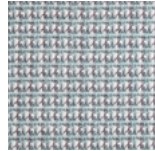
BATAVIA 79



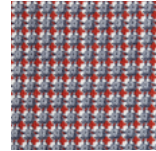
BATAVIA 81



BATAVIA 75



KASIMIRO 81



KASIMIRO 75



ZIGZAG
SAND



ZIGZAG
SILVERBIRCH

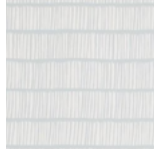


ZIGZAG INDIGO

CATEGORY E - CHRISTOPHER FARR

100% SOLUTION DYED POLYESTER 56.3" / 143 CM WIDTH

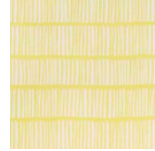
3 YEAR WARRANTY



CROCHET
CELESTE



CROCHET
BLUE



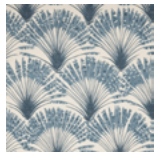
CROCHET
LIMONE

100% POLYESTER FR 52.4" / 133CM WIDTH

3 YEAR WARRANTY



BRISA TURCHESE



BRISA AZZURRO



BRISA PRATO



BRISA ROSA



BRISA LIMONE

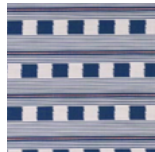
CATEGORY F - CHRISTOPHER FARR BY PERENNIALS

100% SOLUTION DYED ACRYLIC 54" / 137CM WIDTH

3 YEAR WARRANTY



LOST & FOUND
NERO



LOST & FOUND
BLUE



LOST & FOUND
VERDE



LOST & FOUND
ARANCIO



LOST & FOUND
TURCHESE

* All sizes are approximate

IN/OUTDOOR FABRICS

CATEGORY F - CHRISTOPHER FARR BY PERENNIALS

100% SOLUTION DYED ACRYLIC 54" / 137CM WIDTH

3 YEAR WARRANTY



CATEGORY G - 3 BEACHES, SUNBRELLA

100% SOLUTION DYED ACRYLIC 55" / 140CM WIDTH

3 YEAR WARRANTY



* All sizes are approximate