

Plumon
3 Seater sofa,
by Patricia Urquiola

CASA
DESIGN
GROUP

3 Seater sofa

Designer
Patricia Urquiola

Collection
Plumon

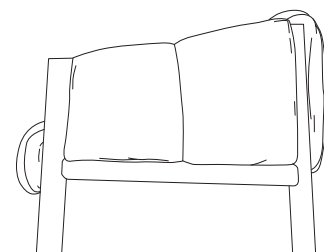
Reference
KSA800200

1/2

cm/inch

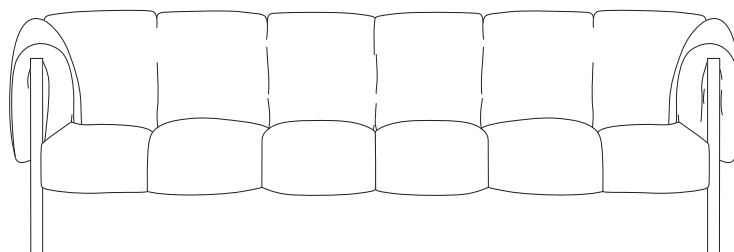
Plumon is based on the concept of clothing, on dressing and undressing furniture.

For Plumon, Urquiola designs a light structure, on which a tailored and padded dress is 'moored', wrapped. This ribbed padding, characterized by stitching, as well as being an aesthetic figure, fulfills the comfort of the product. It is the fit that guides the aesthetics. With a few simple gestures, the dress is placed on the rigid teak structure and embraces it. An extreme ease of use that becomes a real plus for an outdoor collection.



96/37,7

77/25,5



cm/inch

236,6/93,1



3 Seater sofa

Designer
Patricia Urquiola

Collection
Plumon

Reference
KSA800200

2/2

Materials

Wood (Teak / Iroko)

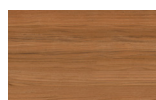
Tonale Lino
100% Solution Dyed Acrylic, Fire
retardant IMO FTP Code 2010
Part 8

Tonale Boucle
60% Solution Dyed Acrylic 40%
polyester Fire retardant IMO FTP
Code 2010 Part 8

Legs Colour Options



Teak



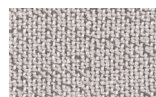
Iroko

Wood

Padded dress

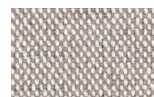


Alba
51L-51T

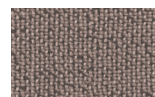


Mist
52L-52T

Tonale Lino



Mud Rain
53L-53T



Haboob
54L-54T



Sunstruck
55L-55T

Maintenance

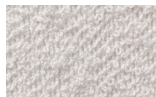
Clean with mild soap using
sponge or cloth. Be gentle
while cleaning, do not scrub
aggressively the fabric. Once
cleaned please make sure you
remove soap excess.

In case of aggressive stains
clean with diluted household
bleach.

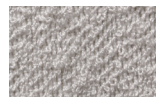
Clean stains promptly. The
longer it remains, more difficult
will be to remove.

Once cleaned the fabric steam
iron the fabric. Just use steam,
be carefull NOT placing the
iron directly in the fabric it will
get damage.

Padded dress



Alba
71L-71T



Mist
77L-77T

Tonale Boucle



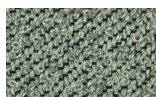
Haboob
72L-72T



Afterglow
73L-73T



Sunstruck
74L-74T



Aurora
75L-75T



Storm
76L-76T