

Plumon
Dining armchair,
by Patricia Urquiola

CASA
DESIGN
GROUP

Dining armchair

Designer
Patricia Urquiola

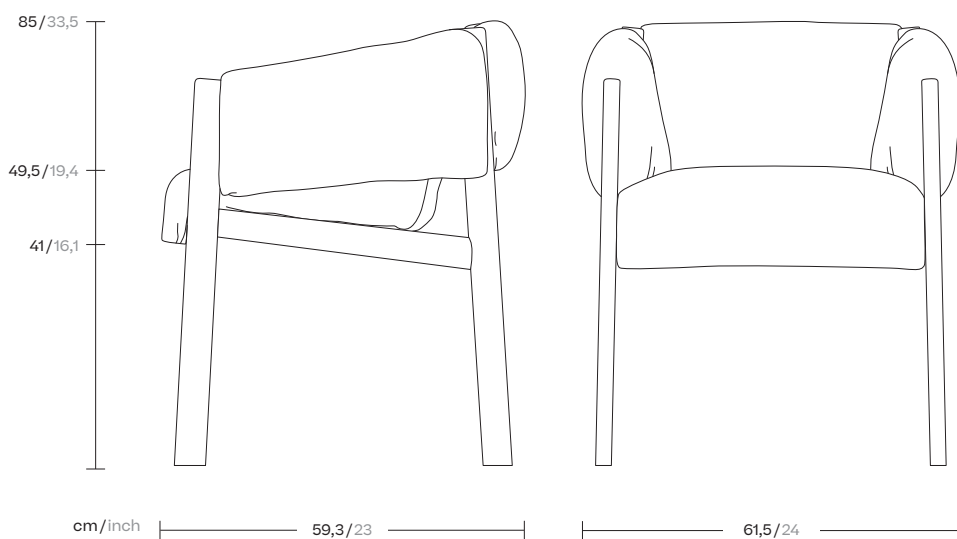
Collection
Plumon

Reference
KSA800100

1/2

Plumon is based on the concept of clothing, on dressing and undressing furniture. For Plumon, Urquiola designs a light structure, on which a tailored and padded dress is 'moored', wrapped. This ribbed padding, characterized by stitching, as well as being an aesthetic figure, fulfills the comfort of the product. It is the fit that guides the aesthetics. With a few simple gestures, the dress is placed on the rigid teak structure and embraces it. An extreme ease of use that becomes a real plus for an outdoor collection.

cm/inch



Dining armchair

Designer
Patricia Urquiola

Collection
Plumon

Reference
KSA800100

2/2

Materials

Wood (Teak / Iroko)

Tonale Lino

100% Solution Dyed Acrylic, Fire retardant IMO FTP Code 2010 Part 8

Tonale Boucle

60% Solution Dyed Acrylic 40% polyester Fire retardant IMO FTP Code 2010 Part 8

Maintenance

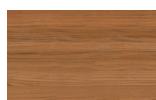
Clean with mild soap using sponge or cloth. Be gentle while cleaning, do not scrub aggressively the fabric. Once cleaned please make sure you remove soap excess.

In case of aggressive stains clean with diluted household bleach.

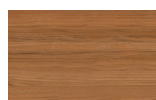
Clean stains promptly. The longer it remains, more difficult will be to remove.

Once cleaned the fabric steam iron the fabric. Just use steam, be carefull NOT placing the iron directly in the fabric it will get damage.

Legs Colour Options



Teak



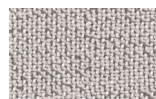
Iroko

Wood

Padded dress



Alba
51L-51T

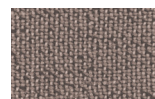


Mist
52L-52T

Tonale Lino



Mud Rain
53L-53T

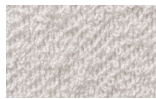


Haboob
54L-54T

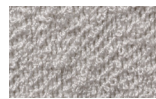


Sunstruck
55L-55T

Padded dress



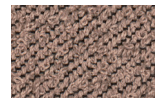
Alba
71L-71T



Mist
77L-77T



Haboob
72L-72T

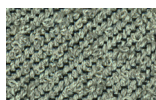


Afterglow
73L-73T



Sunstruck
74L-74T

Tonale Boucle



Aurora
75L-75T



Storm
76L-76T