

Meteo  
Daybed base parasol by  
Konstantin Grcic

CASA  
DESIGN  
GROUP



# Daybed base parasol

Designer  
Konstantin Grcic

Collection  
Meteo

CASA  
DESIGN  
GROUP

1/3

METEO marks the beginning of a new collaboration between Kettal and Konstantin Grcic. It aims to explore the largely untapped design potential of modern parasols. Protection from direct sunlight is becoming a quintessential condition for our health and wellbeing. The increasing impact of parasols and other sunshade systems on the planning and furnishing of modern cityscapes, recreational resorts and private dwellings gives rise to the challenge of a renewed approach to this specialized product category.

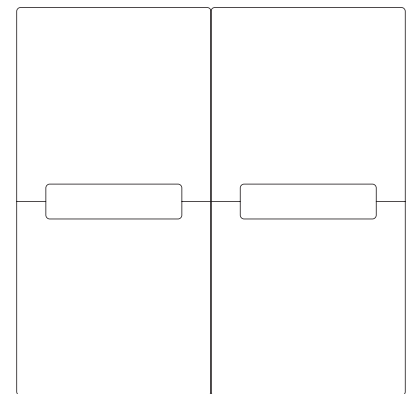
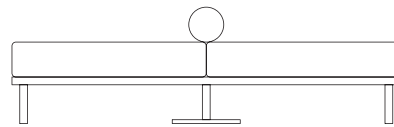
cm/inch

200/78,7

42,1/16,6

cm/inch

200/78,7



# Daybed base parasol

Designer  
Konstantin Grcic

Collection  
Meteo

## Materials

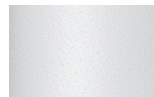
Aluminium  
Antioxy, Heavy Load, Resistant  
En-1421, Kettalize-It, Anti-  
Scratch, Easy Clean, Flame  
Retardant M1, Eco Friendly  
Ecoembes Recycling Process

Teak  
Eco-friendly, A-grade

Marble  
Antioxy, Mold resistant, Easy  
Clean, Resist U.V., X-Temperature

\* Parasol not included

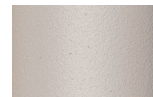
## Structure Colour Options



Chalk  
721



Bone  
678



Tuff  
103



Mist  
773



Flint  
734



London Clay  
729



Mahogany  
100



Carbon  
737



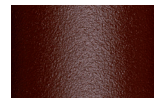
Lilac  
104



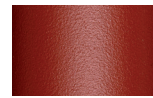
Feldspar  
082



Sepia  
088



Terra Rossa  
087



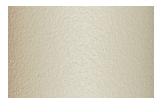
Magma  
086



Terracota  
085



Sahara  
139



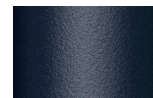
Camomile  
106



Aquamarine  
107



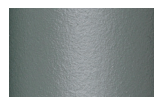
Cobalt  
089



Indigo  
094



Jade  
091



Onyx  
101



Juniper  
092



Amazon  
102



Bronze  
093



Corten  
727



Claystone  
741



Sand Storm  
132



Pumice  
131

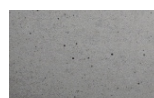


Galena  
105



Manganese  
726

## Base With Wheels



Concrete

## Concrete



# Daybed base parasol

Designer  
Konstantin Grcic

Collection  
Meteo

## Maintenance

Clean with mild soap using sponge or cloth. Be gentle while cleaning, do not scrub aggressively the fabric. Once cleaned please make sure you remove soap excess.

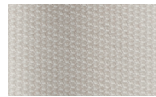
In case of aggressive stains clean with diluted household bleach.

Clean stains promptly. The longer it remains, more difficult will be to remove.

Once cleaned the fabric steam iron the fabric. Just use steam, be carefull NOT placing the iron directly in the fabric it will get damage.

## Seat & Cylindrical Cushions

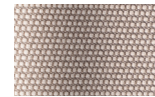
## Terrain Laminate Fabrics



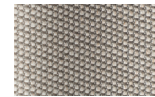
White Cliffs  
290



Dry Sand  
285



Porous Grey  
291



Limestone  
292



Fog  
289



Deer  
286



Wet Sand  
287



Cobblestone  
302



Cyprus Umber  
301



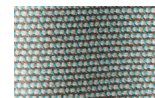
Loam  
297



Charcoal  
293



Arctic  
295



Fjord  
248



Cerulean  
314



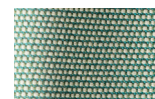
Caribbean  
298



Atlantic  
311



Rainforest  
312



Lagoon  
249



Cedar  
288



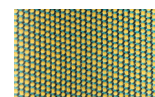
Moss  
296



Olive  
313



Autumn  
315



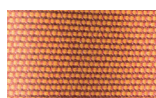
Summer Sky  
317



Golden Sand  
303



Flamma  
304



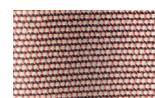
Sunrise  
299



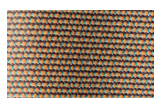
Saffron  
305



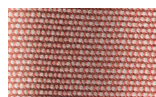
Burnt Sienna  
306



Ash Rose  
294



Cooper  
316



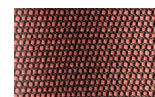
Dusk Pink  
307



Flamingo  
310



Coral  
309



Sandstone  
308