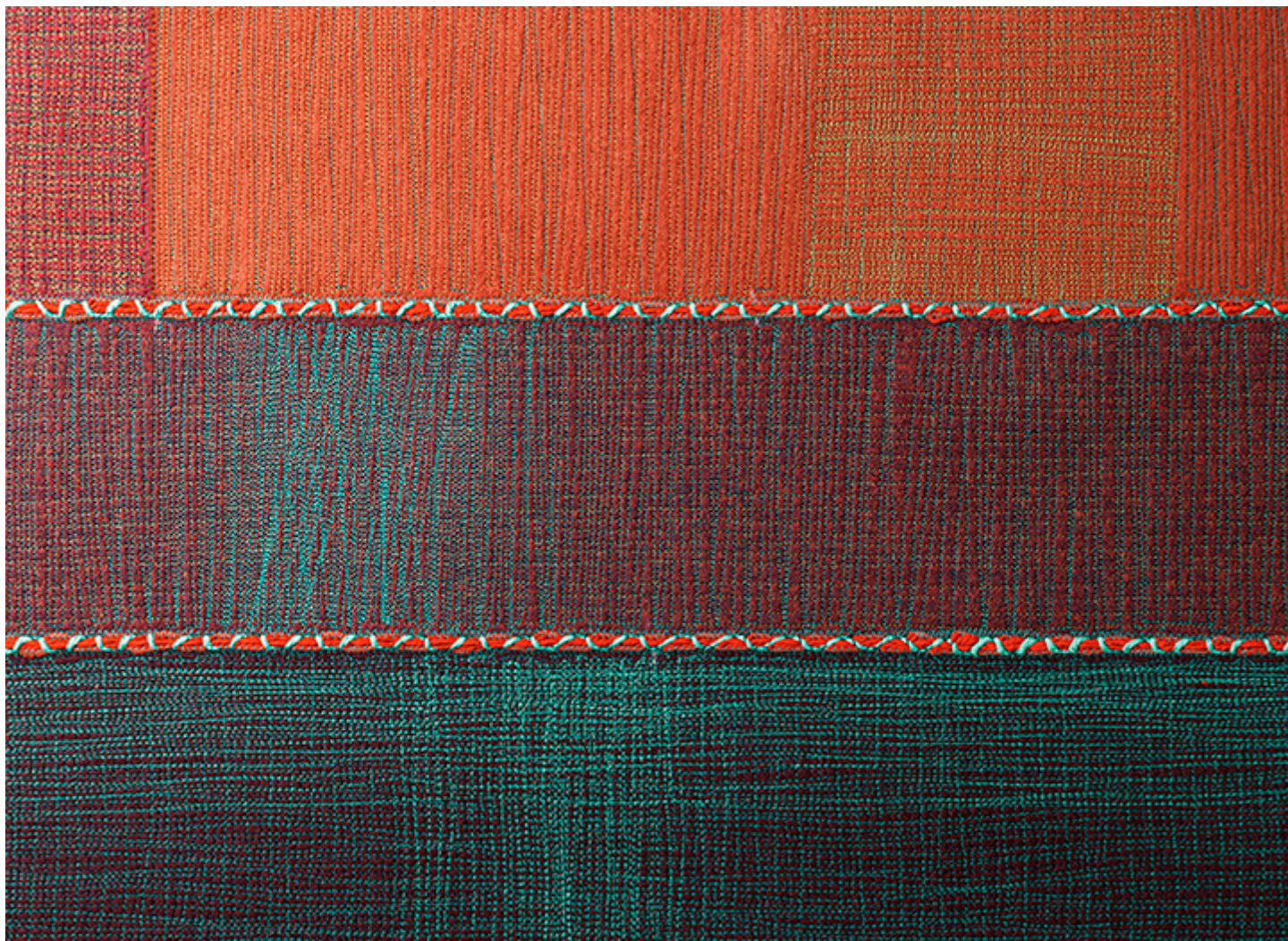


Nomade

design : G. Zecca



Modular rug for indoor environments created by sewing lengthwise with Zigzag stitch felt stripes with a width of about 20 cm each. Each stripe is composed of felt elements recovered from previous processing, which are sewn together with Zigzag stitch. Each element is machine-embroidered with two threads in contrasting colours to create a pattern reminding a very thick and irregular grid. Between the stripes a two-colour braid is included, which is a remnant from the weaving of the Tweed rug. The border features the Pettine stitch.

The availability of the materials and the colour combination produce chromatic results, which are different each time.