

# Nest Sofa

MARCEL WANDERS STUDIO



The Nest Sofa is a comfy elevated nest for one or more people. This sofa is all about its cushions, so they are available in a wide range of fabrics and you can design your nest completely to taste. For the lovers of colourful prints, Marcel Wanders studio has developed two signature textiles. 'Flower bits', with a bloom of flowers and butterflies. And 'One minute', with splashes of blue skies. Or choose 'Patio Outdoor' and enjoy your Nest in your garden, balcony, or patio.

## Detailing



The Nest Armchair is a comfy elevated nest of the fluffiest pillows that feel like a warm embrace.

## Nest Sofa / Frame

### Product

**WIDTH** 177cm | 69.7"

**HEIGHT** 81cm | 31.9"

**DEPTH** 88cm | 34.6"

### Packaging

**WIDTH** 170cm | 66.9"

**HEIGHT** 65cm | 25.6"

**CUBAGE** 0.88m<sup>3</sup> | 31.22ft<sup>3</sup>

**LENGTH** 80cm | 31.5"

**WEIGHT** 25kg | 55.12lbs

## Technical

### ADDITIONAL

Nest Sofa consists of a Frame and a

### MATERIAL

KTL and powdercoated steel frame (suitable for outdoor use), mixed foam, feather & fiber flock filling.

### HEIGHT ARMREST

81cm | 31.9"

### SEAT DEPTH

55cm | 21.7"

### SEAT HEIGHT

48cm | 18.9"

### SEAT WIDTH

122cm | 48"

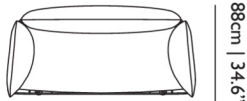
### SEATING CAPACITY

2

## Nest Sofa / Nest Sofa Cushions

### Dimensions

177cm | 69.7"



88cm | 34.6"



48cm | 18.9"



81cm | 31.9"

### Product

**WIDTH** 177cm | 69.7"

**HEIGHT** 81cm | 31.9"

**DEPTH** 88cm | 34.6"

### Packaging

**WIDTH** 84cm | 33.1"

**HEIGHT** 72cm | 28.3"

**CUBAGE** 1.03m<sup>3</sup> | 36.31ft<sup>3</sup>

**LENGTH** 170cm | 66.9"

**WEIGHT** 8kg | 17.64lbs

## Technical

### ADDITIONAL

Alfresco fabric (Cat II) is suitable for outdoor use, outdoor pillows are available on request and are subject to surcharges. Nest Chair pillows are connected by zippers. All covers can be removed for cleaning.

### MATERIAL

Upholstered

### HEIGHT ARMREST

81cm | 31.9"

### SEAT DEPTH

55cm | 21.7"

### SEAT HEIGHT

48cm | 18.9"

### SEAT WIDTH

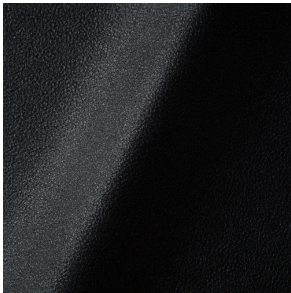
122cm | 48"

### SEATING CAPACITY

2

# Upholstery

*ABBRACCI (available in 5 colours)*



**COMPOSITION**  
100% PES

**ABRASION**  
30000 martindale  
lightfastness 3 - 4  
pilling 5

**FIRE RESISTANCE**  
BS 5852 - Ignition source  
0 (Cigarette)  
BS 5852 - Ignition source  
1 (Match flame equivalent)  
EN 1021-1 (Cigarette)  
EN 1021-2 (Match)  
TB 117-2013

*ALFRESCO (available in 5 colours)*



**COMPOSITION**  
100% PES

**ABRASION**  
30000 martindale  
lightfastness 3 - 4  
pilling 5

**FIRE RESISTANCE**  
Upon request

*BOUCLE (available in 4 colours)*



**COMPOSITION**  
43% CO, 14% PA, 12% CV,  
3% PES, 28% PAN

**ABRASION**  
20000 martindale  
lightfastness 4 - 6  
pilling 4 - 5

**FIRE RESISTANCE**  
EN 1021-1 (Cigarette)  
EN 1021-2 (Match)

*CANVAS 2 (available in 45 colours)*



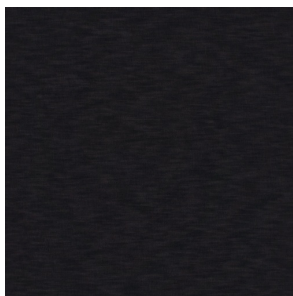
**COMPOSITION**  
90% WO, 10% PA

**ABRASION**  
100000 martindale  
lightfastness 6  
pilling 4

**FIRE RESISTANCE**  
BS 5852 - Ignition source  
1 (Match flame equivalent)  
BS 5852 - Ignition source  
0 (Cigarette)  
TB 117-2013  
EU Ecolabel

---

*DENIM (available in 3 colours)*



**COMPOSITION**

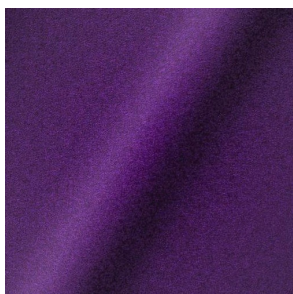
100% CO

**ABRASION**

70000 martindale  
lightfastness 4  
pilling 3 - 4

---

*DIVINA 3 (available in 56 colours)*



**COMPOSITION**

100% WO

**ABRASION**

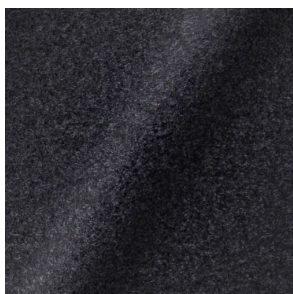
45000 martindale  
lightfastness 7  
pilling 3

**FIRE RESISTANCE**

BS 5852 - Ignition source  
0 (Cigarette)  
BS 5852 - Ignition source  
5 (Crib 5)  
BS 5852 - Ignition source  
1 (Match flame equivalent)  
EN 1021-1 (Cigarette)  
EN 1021-2 (Match)  
TB 117-2013  
EU Ecolabel

---

*DIVINA MD (available in 27 colours)*



**COMPOSITION**

100% WO

**ABRASION**

45000 martindale  
lightfastness 6  
pilling 3

**FIRE RESISTANCE**

BS 5852 - Ignition source  
0 (Cigarette)  
BS 5852 - Ignition source  
5 (Crib 5)  
BS 5852 - Ignition source  
1 (Match flame equivalent)  
EN 1021-1 (Cigarette)  
EN 1021-2 (Match)  
EU Ecolabel

*DIVINA MELANGE 3* (available in 60 colours)



**COMPOSITION**

100% WO

**ABRASION**

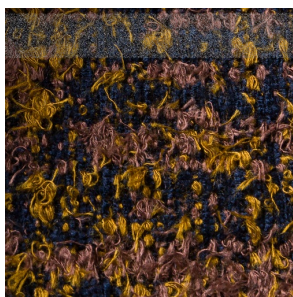
45000 martindale  
lightfastness 6 - 7  
pilling 3

**FIRE RESISTANCE**

BS 5852 - Ignition source  
0 (Cigarette)  
BS 5852 - Ignition source  
5 (Crib 5)  
BS 5852 - Ignition source  
1 (Match flame equivalent)  
EN 1021-1 (Cigarette)  
EN 1021-2 (Match)  
TB 117-2013  
EU Ecolabel

---

*Bearded Leopard* (available in 3 colours)



**COMPOSITION**

77% CV, 15% PES, 7% CO,  
1% PA

**ABRASION**

15000 martindale  
lightfastness 4 - 6  
pilling 4

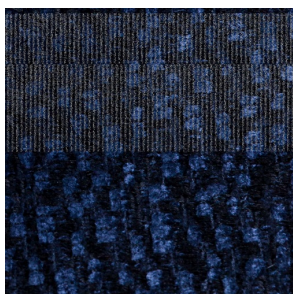
---

*Bison* (available in 1 colours)



---

*Calligraphy Bird* (available in 4 colours)



**COMPOSITION**

64% CV, 21% PES, 15%  
CO

**ABRASION**

50000 martindale  
lightfastness 4 - 6  
pilling 5

---

*Dodo Pavone (available in 3 colours)*



**COMPOSITION**

12% CO, 88% PES

**ABRASION**

40000 martindale  
lightfastness 5  
pilling 4 - 5

---

*Menagerie of Extinct Animals (available in 2 colours)*



**COMPOSITION**

100% PES

**ABRASION**

50000 martindale  
lightfastness 4 - 6  
pilling 5

**FIRE RESISTANCE**

EN 1021-1 (Cigarette)  
EN 1021-2 (Match)  
TB 117-2013

---

*Rendezvous Tokyo Blue (available in 1 colours)*



**COMPOSITION**

100% PES

**ABRASION**

50000 martindale  
lightfastness 4 - 6  
pilling 5

---

*Blushing Sloth Melange Mohair (available in 1 colours)*



**COMPOSITION**

85% WV, 15% WM

**ABRASION**

15000 martindale  
lightfastness 4 - 6  
pilling 2 - 3

*Blushing Sloth Woolly Mohair (available in 1 colours)*



**COMPOSITION**

24% PES, 15% PA, 8% CO,  
24% WM, 29% WV

**ABRASION**

40000 martindale  
lightfastness 4 - 6  
pilling 3 - 4

*FIORD (available in 27 colours)*



**COMPOSITION**

92% WV, 8% PA

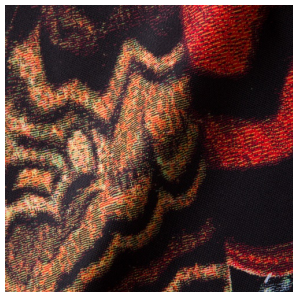
**ABRASION**

60000 martindale  
lightfastness 6  
pilling 4 - 5

**FIRE RESISTANCE**

EN 1021-1 (Cigarette)  
EN 1021-2 (Match)  
BS 5852 - Ignition source  
0 (Cigarette)  
BS 5852 - Ignition source  
1 (Match flame equivalent)

*FLOWER BITS (available in 2 colours)*



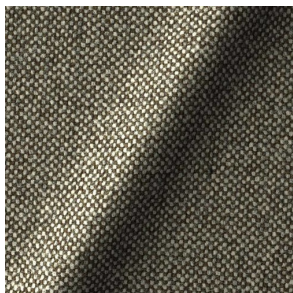
**COMPOSITION**

100% PES

**ABRASION**

50000 martindale  
pilling 4

*HALLINGDAL 65 (available in 58 colours)*



**COMPOSITION**

30% CV, 70% WV

**ABRASION**

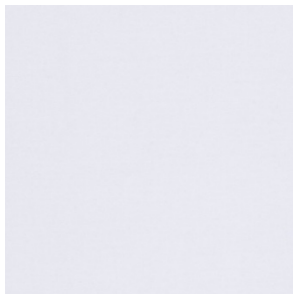
100000 martindale  
lightfastness 7  
pilling 3 - 4

**FIRE RESISTANCE**

BS 5852 - Ignition source  
0 (Cigarette)  
BS 5852 - Ignition source  
5 (Crib 5)  
BS 5852 - Ignition source  
1 (Match flame equivalent)  
EN 1021-1 (Cigarette)  
EN 1021-2 (Match)  
TB 117-2013  
EU Ecolabel

---

*HARALD 3 (available in 30 colours)*



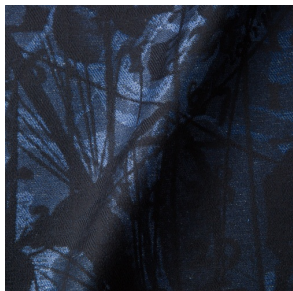
**COMPOSITION**  
100% CO

**ABRASION**  
100000 martindale  
lightfastness 5  
pilling 4 - 5

**FIRE RESISTANCE**  
EN 1021-1 (Cigarette)

---

*JACQUARD, ANDAZ (available in 1 colours)*



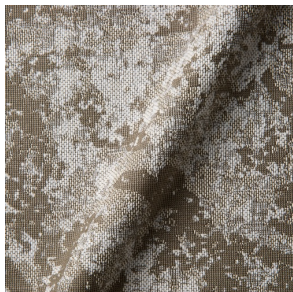
**COMPOSITION**  
34% CO, 30% CV, 24%  
LI, 12% PA

**ABRASION**  
25000 martindale  
lightfastness 4 - 6  
pilling 4 - 5

**FIRE RESISTANCE**  
BS 5852 - Ignition source  
0 (Cigarette)  
BS 5852 - Ignition source  
1 (Match flame equivalent)  
EN 1021-1 (Cigarette)  
EN 1021-2 (Match)

---

*JACQUARD, FRESC (available in 1 colours)*



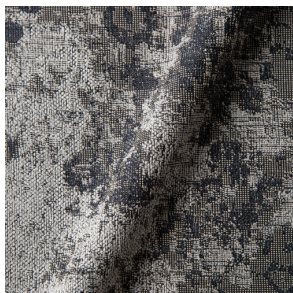
**COMPOSITION**  
52% CV, 38% CO, 10% LI

**ABRASION**  
15000 martindale  
lightfastness 3 - 4  
pilling 2 - 3

**FIRE RESISTANCE**  
BS 5852 - Ignition source  
0 (Cigarette)  
EN 1021-1 (Cigarette)  
EN 1021-2 (Match)

---

*JACQUARD, OLD (available in 2 colours)*



**COMPOSITION**  
52% CV, 38% CO, 10% LI

**ABRASION**  
15000 martindale  
lightfastness 3 - 4  
pilling 2 - 3

**FIRE RESISTANCE**  
BS 5852 - Ignition source  
0 (Cigarette)  
EN 1021-1 (Cigarette)  
EN 1021-2 (Match)

---



*JUSTO (available in 10 colours)*



**COMPOSITION**

15% CO, 35% PC, 10% PA,  
40% CV

**ABRASION**

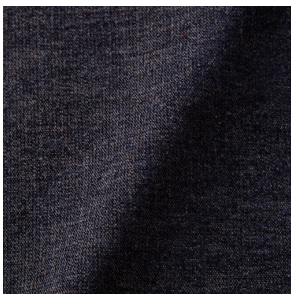
50000 martindale  
lightfastness 5  
pilling 4

**FIRE RESISTANCE**

EN 1021-1 (Cigarette)  
EN 1021-2 (Match)  
TB 117-2013

---

*LISCIO (available in 11 colours)*



**COMPOSITION**

35% WO, 35% CV, 21%  
CO, 9% PA

**ABRASION**

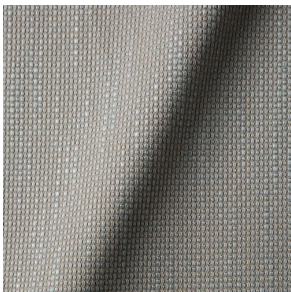
30000 martindale  
lightfastness 4 - 6  
pilling 4

**FIRE RESISTANCE**

TB 117-2013

---

*MACCHEDIL GREZZO (available in 10 colours)*



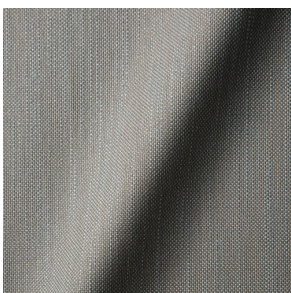
**COMPOSITION**

47% CO, 20% CV, 18%  
PA, 8% LI, 5% PC

**ABRASION**

15000 martindale  
lightfastness 3 - 5  
pilling 4 - 5

*MACCHEDIL SOTTILE (available in 10 colours)*



**COMPOSITION**

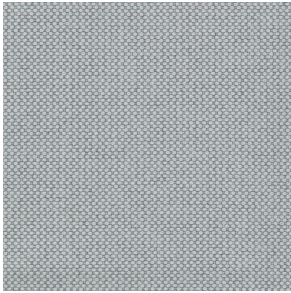
49% CV, 24% PES, 21% LI,  
6% CO

**ABRASION**

20000 martindale  
lightfastness 3 - 5  
pilling 2 - 3

---

*MERIT (available in 43 colours)*



**COMPOSITION**

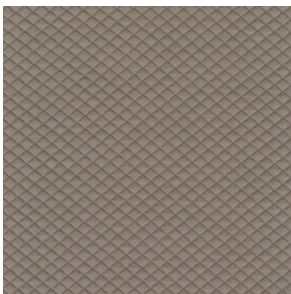
24% PES, 76%

**ABRASION**

85000 martindale  
lightfastness 7  
pilling 4

---

*MOSAIC 2 (available in 15 colours)*



**COMPOSITION**

58% PES, 27% WV, 9% PA,  
6% EA

**ABRASION**

100000 martindale  
lightfastness 6 - 7  
pilling 4 - 5

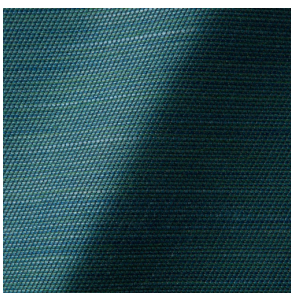
---

*ONE MINUTE (available in 0 colours)*



---

*ORAY RAY (available in 15 colours)*



**COMPOSITION**

39% LI, 38% CV, 15% PE,  
8% CO

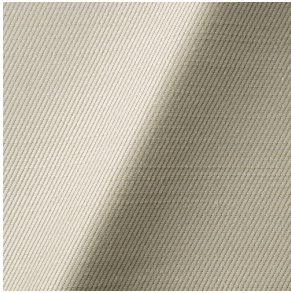
**ABRASION**

30000 martindale  
pilling 4 - 5

**FIRE RESISTANCE**

BS 5852 - Ignition source  
0 (Cigarette)  
BS 5852 - Ignition source  
1 (Match flame equivalent)  
TB 117-2013

*ORAY RONAN (available in 5 colours)*



**COMPOSITION**

39% LI, 38% CV, 15% PE,  
8% CO

**ABRASION**

30000 martindale  
pilling 4 - 5

**FIRE RESISTANCE**

BS 5852 - Ignition source  
0 (Cigarette)  
BS 5852 - Ignition source  
1 (Match flame equivalent)  
TB 117-2013

---

*PALETTE (available in 0 colours)*

**COMPOSITION**

42% CO, 29% WO

**ABRASION**

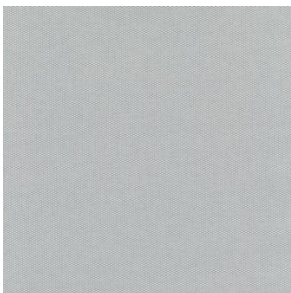
45000 martindale  
lightfastness 4 - 5  
pilling 3 - 3

**FIRE RESISTANCE**

BS 5852 - Ignition source  
0 (Cigarette)  
TB 117-2013  
BS 5852 - Ignition source  
5 (Crib 5)

---

*PATIO (available in 24 colours)*



**COMPOSITION**

100% CS

**ABRASION**

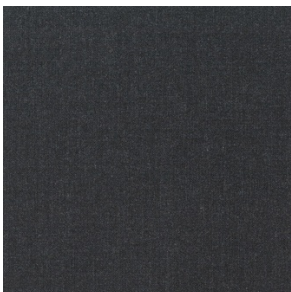
50000 martindale  
lightfastness 7  
pilling 4 - 5

**FIRE RESISTANCE**

BS 5852 - Ignition source  
5 (Crib 5)  
EN 1021-2 (Match)

---

*REMIX 3 (available in 53 colours)*



**COMPOSITION**

10% PA, 90% WV

**ABRASION**

100000 martindale  
lightfastness 5  
pilling 4

*SOFTLINEN (available in 2 colours)*



**COMPOSITION**  
100% LI

**ABRASION**  
25000 martindale  
lightfastness 4 - 6  
pilling 3 - 4

**FIRE RESISTANCE**  
BS 5852 - Ignition source  
0 (Cigarette)  
BS 5852 - Ignition source  
1 (Match flame equivalent)  
EN 1021-1 (Cigarette)  
EN 1021-2 (Match)

---

*SOLIS (available in 9 colours)*



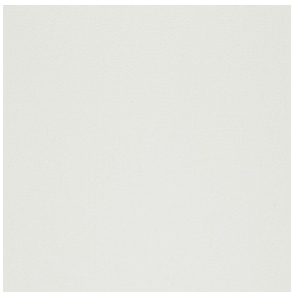
**COMPOSITION**  
60% WO, 30% PES, 2%  
PA, 3% PC

**ABRASION**  
40000 martindale  
lightfastness 5  
pilling 3 - 4

**FIRE RESISTANCE**  
EN 1021-1 (Cigarette)  
EN 1021-2 (Match)  
TB 117-2013

---

*STEELCUT 2 (available in 37 colours)*



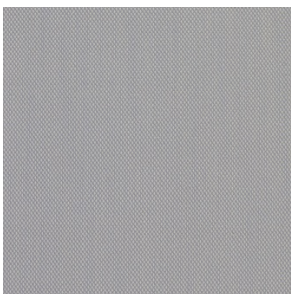
**COMPOSITION**  
90% WV, 10% PA

**ABRASION**  
100000 martindale  
lightfastness 6  
pilling 3 - 4

**FIRE RESISTANCE**  
BS 5852 - Ignition source  
0 (Cigarette)  
BS 5852 - Ignition source  
1 (Match flame equivalent)  
EN 1021-1 (Cigarette)  
EN 1021-2 (Match)  
TB 117-2013  
EU Ecolabel

---

*STEELCUT TRIO 3 (available in 54 colours)*

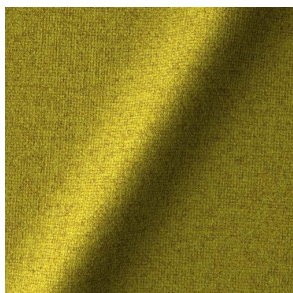


**COMPOSITION**  
90% WV, 10% PA

**ABRASION**  
100000 martindale  
lightfastness 5  
pilling 4

**FIRE RESISTANCE**  
BS 5852 - Ignition source  
0 (Cigarette)  
BS 5852 - Ignition source  
1 (Match flame equivalent)  
EN 1021-1 (Cigarette)  
EN 1021-2 (Match)  
EU Ecolabel

*TONICA 2 (available in 39 colours)*



**COMPOSITION**

100% WV

**ABRASION**

45000 martindale  
lightfastness 6 - 7  
pilling 4 - 5

**FIRE RESISTANCE**

EN 1021-1 (Cigarette)  
EN 1021-2 (Match)

---

*VESPER (available in 8 colours)*



**COMPOSITION**

10% CO, 40% LI, 10% PA,  
10% PES, 30% CV

**ABRASION**

40000 martindale  
lightfastness 5  
pilling 4

**FIRE RESISTANCE**

EN 1021-1 (Cigarette)  
EN 1021-2 (Match)  
TB 117-2013

---