

CLAN

design Piero Lissoni

Family of armchairs with supporting frame in wood and preformed curved wood with padding in differentiated density polyurethane foam and seat sprung in cross-woven, coated rubber elastic straps. Covering in needle punched, resinated, non-woven polyester fiber, bonded onto a polyamide velveteen backing and 100% polyether thermally bonded onto a polyamide velveteen backing. Seat cushion padding in differentiated density polyurethane foam and Visco-Soft, covered in needle punched, resinated, non-woven polyester fiber, bonded onto a polyamide velveteen backing. Back cushion (provided as standard for Clan Grande only) in pre-washed and sterilized goose down, stitched into separate compartments with polyurethane foam insert. Loose cushions 42x42cm in prewashed and sterilized goose down, stitched into separate compartments.

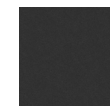
Feet made of laser-cut steel sheet with epoxy powder coating gunmetal gray or burnished color. Floor support secured by feet in thermoplastic material.

Fabric or leather upholstery, both fully removable by zippers and Velcro fastenings.

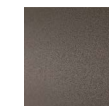
Seat depth: Clan Piccola 45/66 cm;
Clan Grande 59 cm;
Clan Bassa 71 cm;
Clan Alta 71 cm.



Feet



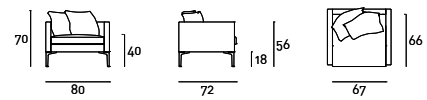
Steel with
Gunmetal Grey
Coating



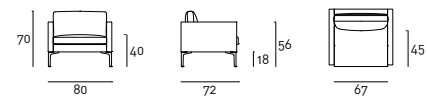
Burnished
Painted Steel

Technical Drawings

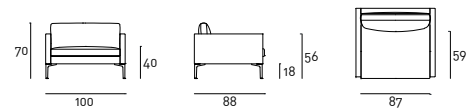
Clan Piccola



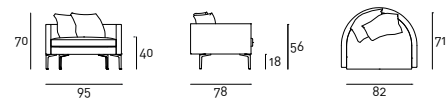
Clan Piccola with backrest



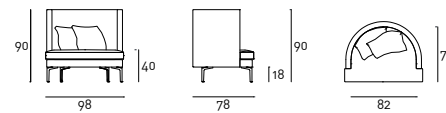
Clan Grande



Clan Bassa



Clan Alta



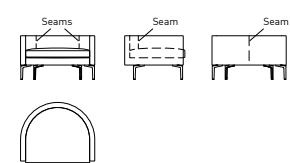
Loose Cushion



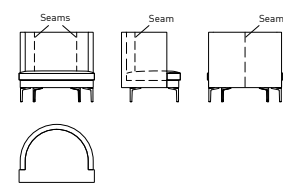
Notes

For Clan Bassa and Clan Alta upholstery in textured or striped fabrics and leather, the inner covering of the backrest is done with two seams, while the outer covering will have one central stitching.

Clan Bassa



Clan Alta





CASA
DESIGN
GROUP



CASA
DESIGN
GROUP

