

Hortensia Armchair

ANDRÉS REISINGER & JÚLIA ESQUÉ



The Hortensia Armchair, by Andrés Reisinger & Júlia Esqué, innovatively replicates the beauty of nature. This blooming beauty is inspired by the basic human need for warmth and comfort. Sit down and feel comforted, calm, and soothed. As if you're sitting in a blooming flower, enveloped in smooth and gentle petals. The wondrous Hortensia Armchair will be the softest place in your home. Configurable in a range of different fabrics and leathers of your choice, the Hortensia Armchair blooms in any interior.

Detailing



The armchair's curves and signature fabric are inspired by Hortensia flowers: a voluminous plant with blooming petals.

Hortensia Armchair

Dimensions

107cm | 42.1"

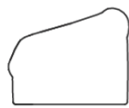


95cm | 37.4"

55cm | 21.7"



43cm | 16.9"



76cm | 29.9"

Product

WIDTH 107cm | 42.1"

HEIGHT 76cm | 29.9"

DEPTH 95cm | 37.4"

WEIGHT NETTO 48.3kg | 106.48lbs

Packaging

WIDTH 104cm | 40.9"

HEIGHT 83cm | 32.7"

CUBAGE 1m³ | 35.36ft³

LENGTH 116cm | 45.7"

WEIGHT 62.5kg | 137.79lbs

Technical

MATERIAL

Moulded foam on metal frame

HEIGHT ARMREST

53cm | 20.9"

HEIGHT ARMREST 2

67cm | 26.4"

SEAT DEPTH

54cm | 21.3"

SEAT HEIGHT

43cm | 16.9"

SEAT HEIGHT 2

38cm | 15"

SEAT WIDTH

55cm | 21.7"

SEATING CAPACITY

1

Upholstery

BOUCLE (available in 4 colours)



COMPOSITION

43% CO, 14% PA, 12% CV,
3% PES, 28% PAN

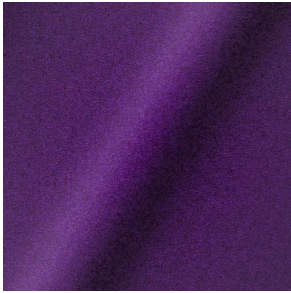
ABRASION

20000 martindale
lightfastness 4 - 6
pilling 4 - 5

FIRETEST

BS5852 part 1

DIVINA 3 (available in 56 colours)

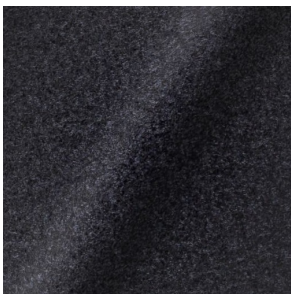


COMPOSITION
100% WO

ABRASION
45000 martindale
lightfastness 7
pilling 3

FIRETEST
BS5852 part 1
US. Cal. Bull. 117-2013

DIVINA MD (available in 27 colours)

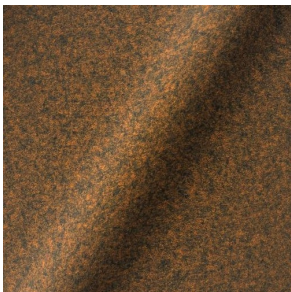


COMPOSITION
100% WO

ABRASION
45000 martindale
lightfastness 6
pilling 3

FIRETEST
BS5852 part 1
US. Cal. Bull. 117-2013

DIVINA MELANGE 3 (available in 60 colours)

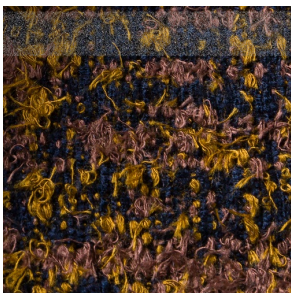


COMPOSITION
100% WO

ABRASION
45000 martindale
lightfastness 6 - 7
pilling 3

FIRETEST
BS5852 part 1
US. Cal. Bull. 117-2013

Bearded Leopard (available in 3 colours)

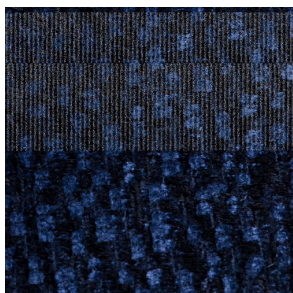


COMPOSITION
77% CV, 15% PES, 7% CO,
1% PA

ABRASION
15000 martindale
lightfastness 4 - 6
pilling 4

FIRETEST
BS5852 part 1 on request
US. Cal. Bull. 117-2013

Calligraphy Bird (available in 4 colours)



COMPOSITION

64% CV, 21% PES, 15%
CO

ABRASION

50000 martindale
lightfastness 4 - 6
pilling 5

FIRETEST

BS5852 part 1 on request
US. Cal. Bull. 117-2013

Dodo Pavone (available in 3 colours)



COMPOSITION

12% CO, 88% PES

ABRASION

40000 martindale
lightfastness 5
pilling 4 - 5

FIRETEST

BS5852 part 1 on request
US. Cal. Bull. 117-2013

Blushing Sloth Melange Mohair (available in 1 colours)



COMPOSITION

85% WV, 15% WM

ABRASION

15000 martindale
lightfastness 4 - 6
pilling 2 - 3

FIRETEST

BS5852 part 1 on request
US. Cal. Bull. 117-2013

Blushing Sloth Woolly Mohair (available in 1 colours)



COMPOSITION

24% PES, 15% PA, 8% CO,
24% WM, 29% WV

ABRASION

40000 martindale
lightfastness 4 - 6
pilling 3 - 4

FIRETEST

BS5852 part 1 on request
US. Cal. Bull. 117-2013

FIORD (available in 27 colours)



COMPOSITION

92% WV, 8% PA

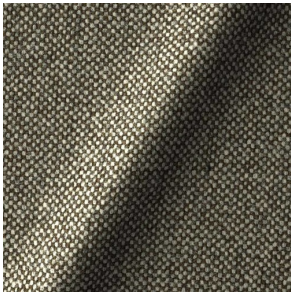
ABRASION

60000 martindale
lightfastness 6
pilling 4 - 5

FIRETEST

BS5852 part 1 on request
US. Cal. Bull. 117-2013

HALLINGDAL 65 (available in 58 colours)



COMPOSITION

30% CV, 70% WV

ABRASION

100000 martindale
lightfastness 7
pilling 3 - 4

FIRETEST

BS5852 part 1

JACQUARD, FRESC (available in 1 colours)



COMPOSITION

52% CV, 38% CO, 10% LI

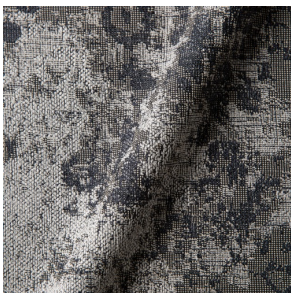
ABRASION

15000 martindale
lightfastness 3 - 4
pilling 2 - 3

FIRETEST

BS5852 part 1 on request
US. Cal. Bull. 117-2013

JACQUARD, OLD (available in 2 colours)



COMPOSITION

52% CV, 38% CO, 10% LI

ABRASION

15000 martindale
lightfastness 3 - 4
pilling 2 - 3

FIRETEST

BS5852 part 1 on request
US. Cal. Bull. 117-2013

JUSTO (available in 10 colours)



COMPOSITION

15% CO, 35% PC, 10% PA,
40% CV

ABRASION

50000 martindale
lightfastness 5
pilling 4

FIRETEST

BS5852 part 1 on request
US. Cal. Bull. 117-2013

LISCIO (available in 11 colours)



COMPOSITION

35% WO, 35% CV, 21%
CO, 9% PA

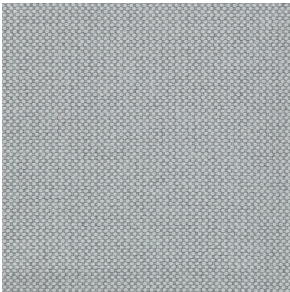
ABRASION

30000 martindale
lightfastness 4 - 6
pilling 4

FIRETEST

BS5852 part 1 on request
US. Cal. Bull. 117-2013

MERIT (available in 43 colours)



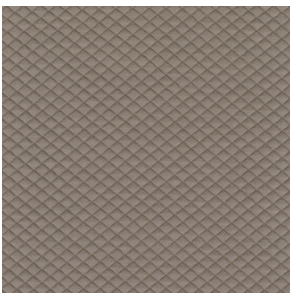
COMPOSITION

24% PES, 76%

ABRASION

85000 martindale
lightfastness 7
pilling 4

MOSAIC 2 (available in 15 colours)



COMPOSITION

58% PES, 27% WV, 9% PA,
6% EA

ABRASION

100000 martindale
lightfastness 6 - 7
pilling 4 - 5

SOLIS (available in 9 colours)



COMPOSITION

60% WO, 30% PES, 2%
PA, 3% PC

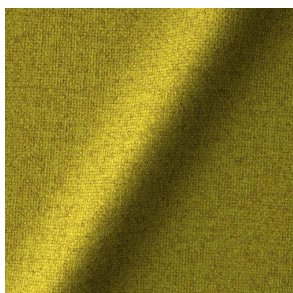
ABRASION

40000 martindale
lightfastness 5
pilling 3 - 4

FIRETEST

BS5852 part 1 on request
US. Cal. Bull. 117-2013

TONICA 2 (available in 39 colours)



COMPOSITION

100% WV

ABRASION

45000 martindale
lightfastness 6 - 7
pilling 4 - 5

FIRETEST

US. Cal. Bull. 117-2013

VESPER (available in 8 colours)



COMPOSITION

10% CO, 40% LI, 10% PA,
10% PES, 30% CV

ABRASION

40000 martindale
lightfastness 5
pilling 4

FIRETEST

BS5852 part 1 on request
US. Cal. Bull. 117-2013
