

H20

2024



A machai with metal inside structure padded with non-deformable polyurethane foam in different density. Completely covered by fabric or leather as per samples.

Not removable covers.

On demand removable covers excluding Cat. L1, L2 and custom leather C.O.L.

The combination of the hinges is defined by Gallotti&Radice by matching it with the chosen covering.

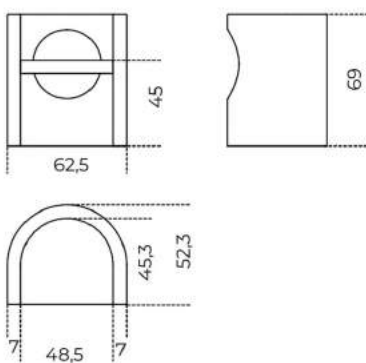
Additional stitching is required for elements with leather upholstery compared to elements with fabric upholstery.

Cm (L x P x H)

62,5 x 52,3 x 69

Inches (L x P x H)

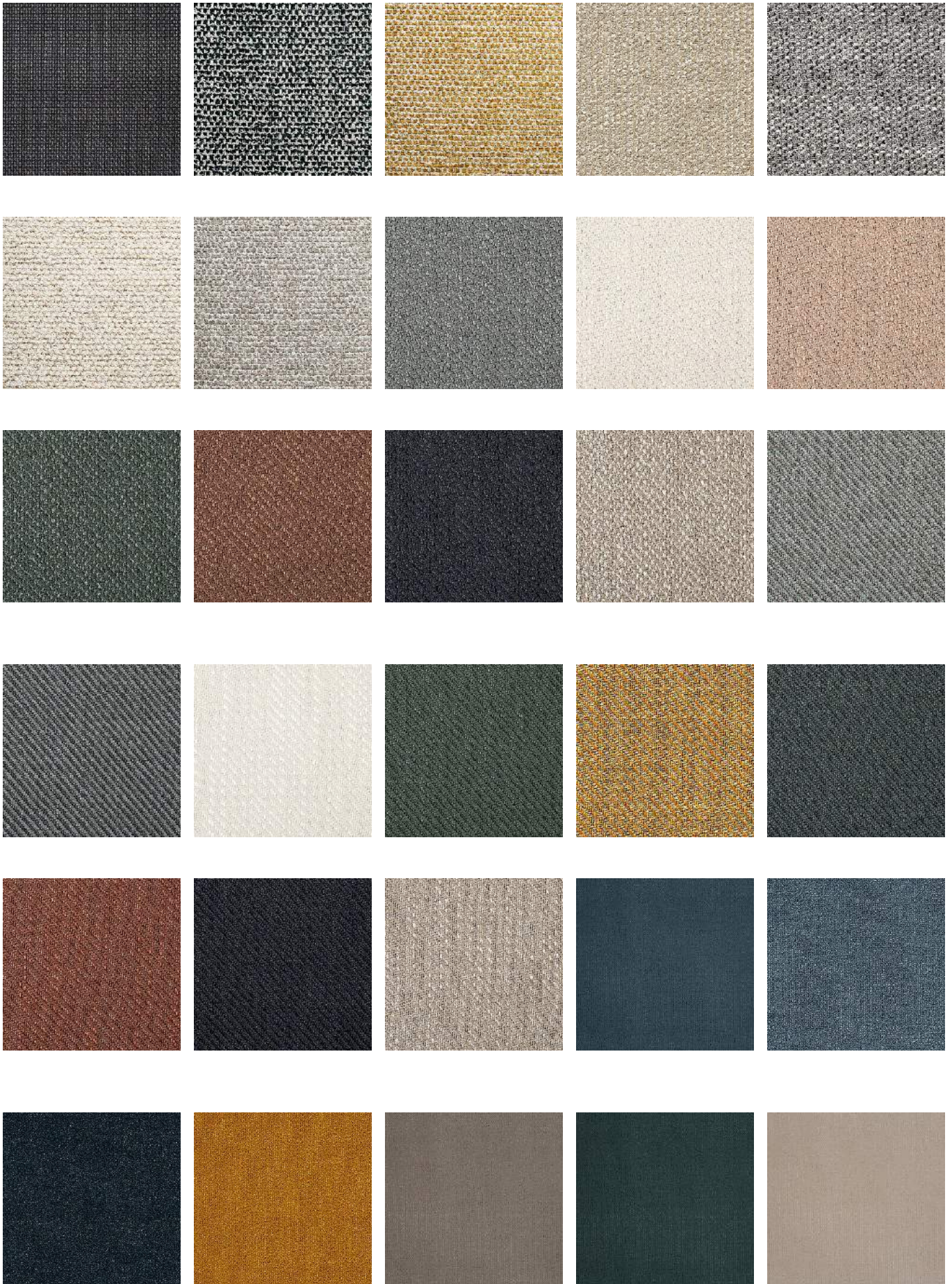
24³/₄ x 20³/₄ x 27¹/₄



Finishes

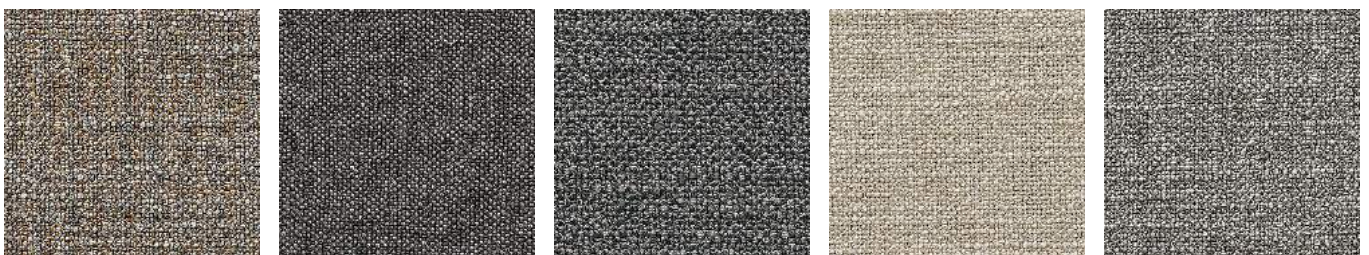
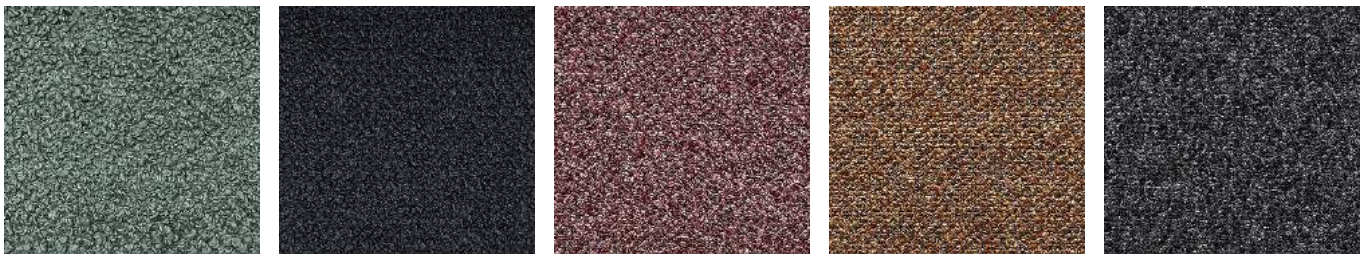
Fabric Cat.A

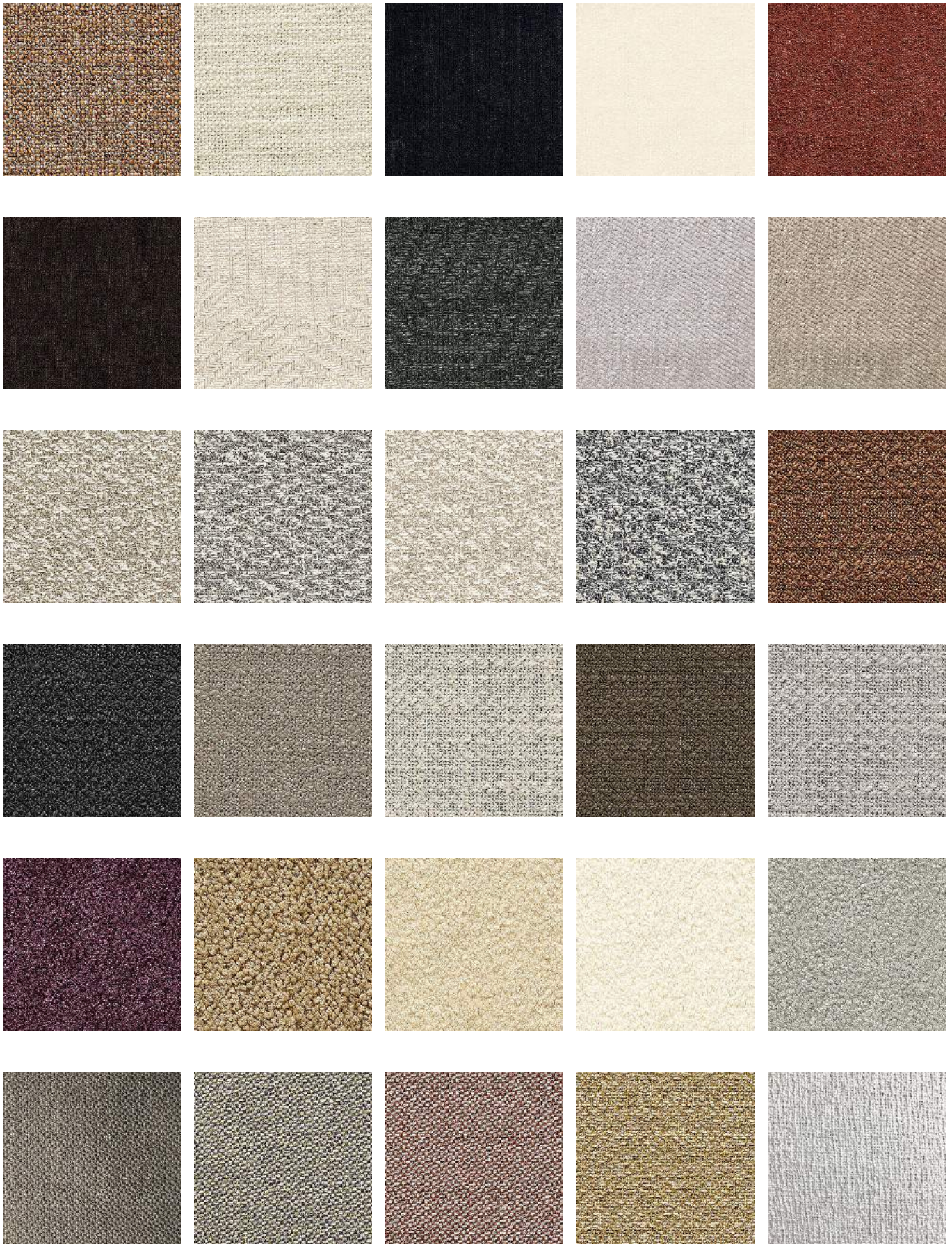






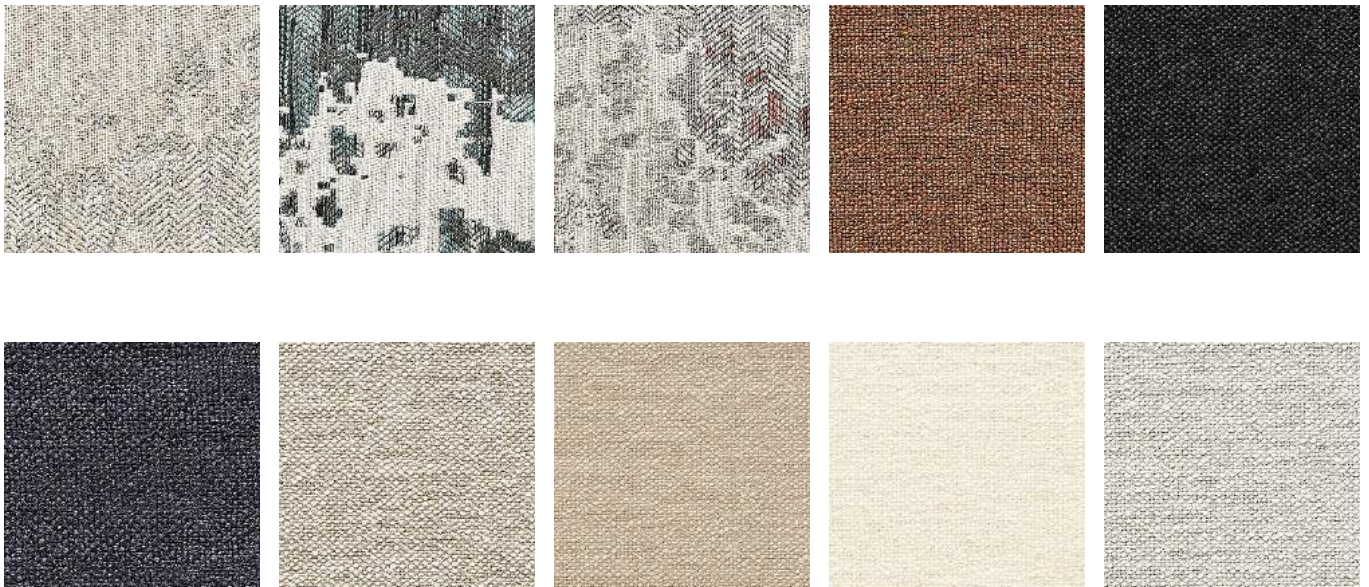
Fabric Cat.B

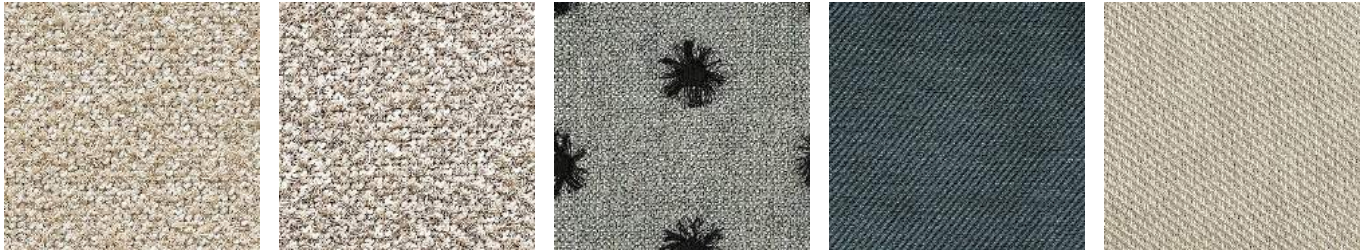




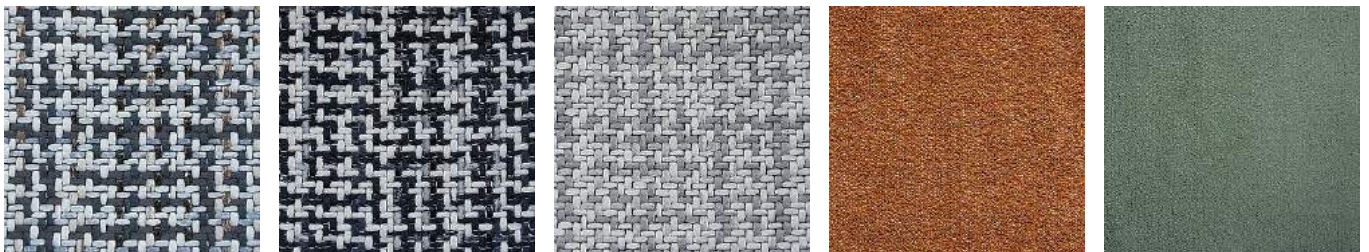


Fabric Cat.C





Fabric Cat.D





Pleasu e ce ulean 107



Pleasu e Deep Ocean 002



Pleasu e Djon 015



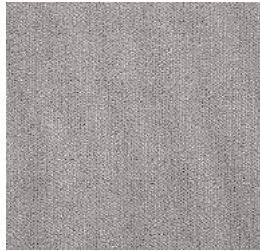
Pleasu e ose powde 031



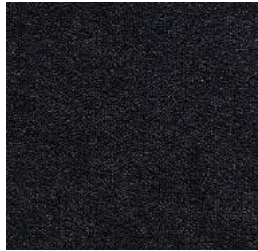
Pleasu e sienna 128



Pleasu e silt 116



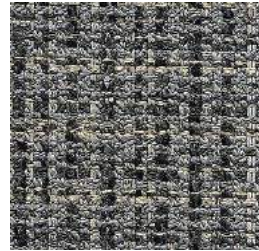
Pleasu e Silve 009



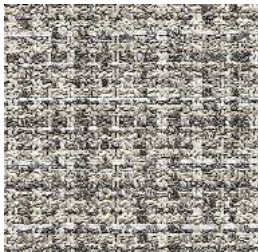
Pleasu e slate 112



Zest ambe 805



Zest anth acite 803



Zest g eige 801

Leather Cat.L1



Fa d ambe 2343



Fa d anth acite 2379



Fa d clay 2303



Fa d dee 2346



Fa d ec u 2304



Fa d loden geen 2357



Fa d milk 2300



Fa d nude 2334



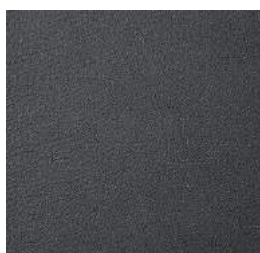
Fa d otte 2348



Fa d silt 2324



Fa d silve 2302



Fa d slate 2386



Fa d tan 2305



Soft amber 004



Soft anthracite 005



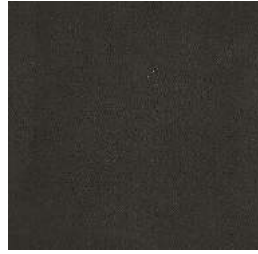
Soft clay 002



Soft deer 003



Soft ecru 001



Suede grey 020



Suede grey 058



Suede grey 074



Suede sand 006



Suede sand 012

Leather Cat.L2



Leather black 001



Leather clay 008



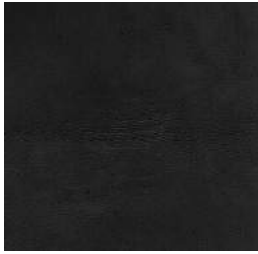
Leather milk 010



Leather rose powder 012



Leather tobacco 013



Nabuk black 2138



Nabuk blue 2117



Nabuk cement 2115