

FLAMINGO

APPENDIABITI | CLOTHES STAND

Design G. Carollo

2009



FLAMINGO

Design G. Carollo

APPENDIABITI | CLOTHES STAND

2009

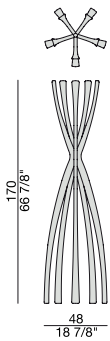
Portabiti in massello di
noce canaletta.

*Clothes-stand in solid
canaletta walnut.*

*Kleiderständer aus
massivem Nussbaum
Canaletta.*

*Porte manteaux en noyer
canaletta massif.*

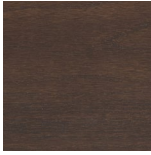
*Perchero en nogal
canaletta macizo.*



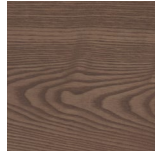
Essenze | Wood



FRASSINO NATURALE
Natural Ash



FRASSINO
Ash
tinto/stained moka



FRASSINO
Ash
tinto/stained canaletta walnut



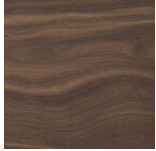
FRASSINO
Ash
tinto/stained wengé



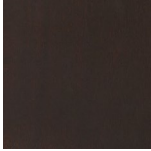
FRASSINO
Ash
tinto/stained canapa



FRASSINO
Ash
tinto/stained caffè



NOCE CANALETTA
Canaletta Walnut

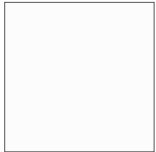


NOCE CANALETTA
Canaletta Walnut
tinto/stained moka

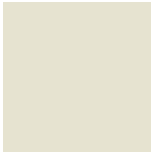


NOCE CANALETTA
Canaletta Walnut
tinto/stained wengé

Laccato opaco poro aperto/chiuso | Matt Lacquered open/closed pore



BIANCO
White
(RAL 9016)



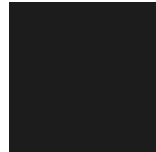
AVORIO
Ivory
(RAL 1013)



ARGILLA
Argilla
(RAL 7006)



PIOMBO
Piombo
(NCS S5005G20Y)



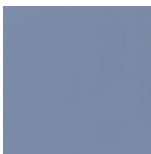
NERO
Black
(RAL 9005)



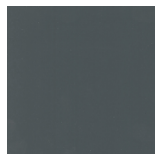
GRANATA
Granata
(NCS S4050Y90R)



PISTACCHIO
Pistacchio
(PANTONE 5825)



AVIO
Avio
(PANTONE 5415)



IRON
Iron
(RAL 7011)



CIOCCOLATO
Chocolate
(RAL 8019)