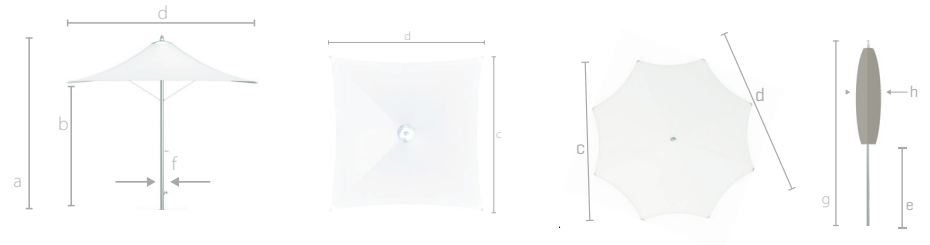


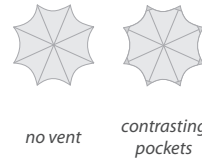


# ocean master MAX / f-1



		most height (open, including finial)	canopy height	flat to flat (diameter)	point to point (diameter)	table clear- ance	mast diam- eter	total height (closed)	folded canopy (diameter)
<b>f-1</b>	sizes [ft/m]	a (in/cm)	b (in/cm)	c (in/cm)	d (in/cm)	e (in/cm)	f (in/cm)	g (in/cm)	h (in/cm)
<b>square</b>	13.0' / 4.0m	141 / 358	101 / 257	155 / 394	155 / 394	4 / 10	2.875 / 7.3	121 / 307	14 / 36
									
<b>octagon</b>	18.0' / 5.5m	141 / 358	101 / 257	155 / 394	218 / 554	4 / 10	2.875 / 7.3	121 / 307	14 / 36
									

## vent and pocket options



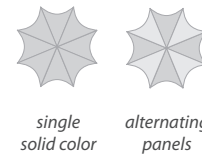
## profile



## canopy options



## panel options



## lifting system



## finial



## mast finish

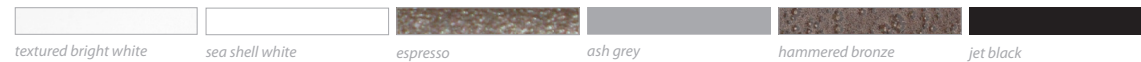


## finish options

### standard



### powder coat



Dimension Tolerances  $\pm 2"$   
 Dimensions shown correspond to indicated lift system  
 Options are subject to change without notice  
 Some options are only available in certain sizes and shapes