

# Container Stool

MARCEL WANDERS STUDIO



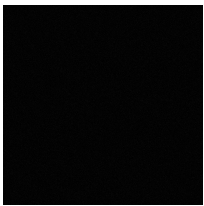
Configure, combine, repeat. Compliment your Container Table with the Container stool and add a little excitement to lunchtimes or other extraordinary gatherings.

## *Detailing*



The Container Stool is weatherproof and suitable for outdoor use.

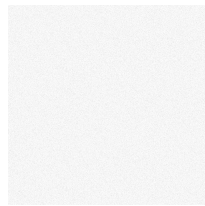
## *Colours*



Black



Light Grey



White

Light Grey

## Container Stool / Stool

### Dimensions

30cm | 11.8"



44cm | 17.3"

### Product

**WIDTH** 30cm | 11.8"  
**HEIGHT** 44cm | 17.3"  
**DEPTH** 30cm | 11.8"  
**DIAMETER** 30cm | 11.8"  
**WEIGHT NETTO** 2kg | 4.4lbs

### Packaging

**WIDTH** 32cm | 12.6"  
**HEIGHT** 46cm | 18.1"  
**CUBAGE** 0.05m<sup>3</sup> | 1.66ft<sup>3</sup>  
**LENGTH** 32cm | 12.6"  
**WEIGHT** 2.5kg | 5.5lbs

### Technical

#### MATERIAL

PE

#### SEAT DEPTH

22cm | 8.7"

#### SEAT WIDTH

30cm | 11.8"

#### SEAT HEIGHT

44cm | 17.3"

## Container Stool / Stool New Antiques

### Dimensions

38 cm | 15"



44 cm | 17.3"

### Product

**WIDTH** 38cm | 15"  
**HEIGHT** 44cm | 17.3"  
**DEPTH** 38cm | 15"  
**DIAMETER** 38cm | 15"  
**WEIGHT NETTO** 4.5kg | 9.92lbs

### Packaging

**WIDTH** 44.5cm | 17.5"  
**HEIGHT** 49cm | 19.3"  
**CUBAGE** 0.1m<sup>3</sup> | 3.43ft<sup>3</sup>  
**LENGTH** 44.5cm | 17.5"  
**WEIGHT** 6kg | 13.23lbs

### Technical

**MATERIAL**

PE

**SEAT DEPTH**

34cm | 13.4"

**SEAT HEIGHT**

44cm | 17.3"

**SEAT WIDTH**

34cm | 13.4"

---