

Talo outdoor

Hexagonal side table / centro rincón hexagonal

Altherr Désile Park, 2022

C710



UHPC concrete base made up of natural mineral components and organic fibers (non-metallic), which ensure exceptional resistance to weathering. Optional clear tempered glass top.

Estructura de cemento UHPC compuesto por una mezcla de componentes minerales naturales y fibras orgánicas (no metálicas) que aseguran una excepcional resistencia a la intemperie. Tapa opcional de cristal templado transparente.

Shipment details

Qty	1 coffee table (1 box)
Volume	0,09 m ³ / 3.2 ft ³

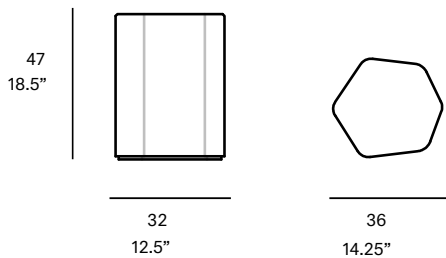
Without glass Top option

Gross weight	20 kg / 44.1 lb
Net weight	12 kg / 26.5 lb

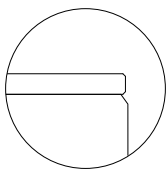
With glass Top option

Gross weight	22 kg / 48.5 lb
Net weight	14 kg / 30.9 lb

Item dimensions (width x depth x height)	32 x 36 x 47 cm 12.5" x 14.25" x 18.5"
---	---



Optional tabletop:



- tempered glass top 6 mm/0.24" thick.

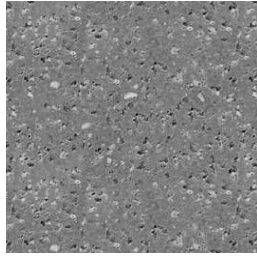
outdoor

concrete base

UHPC concrete



C1 stone



C2 slate



C3 terracotta