

outdoor

Talo outdoor

Hexagonal coffee / centro hexagonal

Altherr Désile Park, 2022

C708



UHPC concrete base made up of natural mineral components and organic fibers (non-metallic), which ensure exceptional resistance to weathering. Optional clear tempered glass top.

Estructura de cemento UHPC compuesto por una mezcla de componentes minerales naturales y fibras orgánicas (no metálicas) que aseguran una excepcional resistencia a la intemperie. Tapa opcional de cristal templado transparente.

Shipment details

Qty 1 coffee table (1 box)
Volume 0,10 m³ / 21.2 ft³

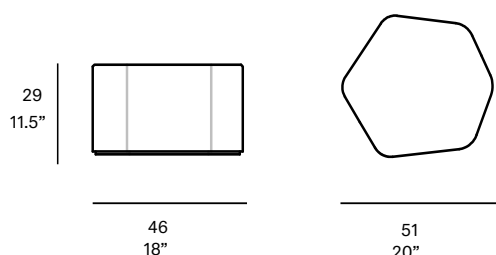
Without glass Top option

Gross weight 22 kg / 48.5 lb
Net weight 14 kg / 30.9 lb

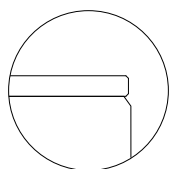
With glass Top option

Gross weight 25 kg / 55.1 lb
Net weight 17 kg / 37.5 lb

Item dimensions 46 x 51 x 29 cm
(width x depth x height) 18" x 20" x 11.5"



Optional tabletop:



- tempered glass top 6 mm/0.24" thick.

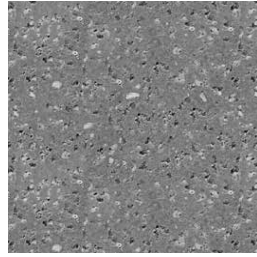
outdoor

concrete base

UHPC concrete



C1 stone



C2 slate



C3 terracotta