

Talo outdoor

Rectangular dining table / mesa rectangular

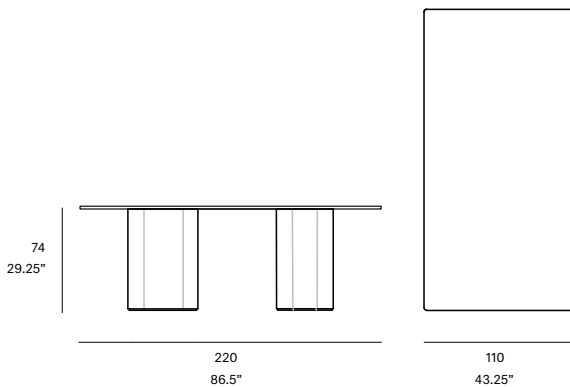
Altherr Désile Park, 2022

C700 220

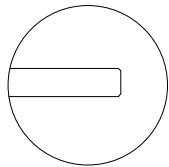


Dining table with UHPC concrete base made up of natural mineral components and organic fibers (non-metallic), which ensure exceptional resistance to weathering. Tabletop options: HPL Trespa® 13 mm/0.51" thick, FENIX NTM® 12 mm/0.47" thick and Dekton® 12 mm/0.47" thick. Delivered unassembled.

Mesa de comedor con estructura de hormigón UHPC compuesto por una mezcla de componentes minerales naturales y fibras orgánicas (no metálicas) que aseguran una excepcional resistencia a la intemperie. Opciones de tablero: HPL Trespa® de 13 mm, FENIX NTM® de 12 mm y Dekton® de 12 mm. Se sirven desmontadas.



Tabletop options:



- HPL Trespa® 13 mm/0.51" thick.
- FENIX NTM® 12 mm/0.47" thick.
- Dekton® 12 mm/0.47" thick.

Shipment details

Qty 1 dining table (2 boxes)
Volume 0,90 m³ / 27.5 ft³

HPL Top option
Gross weight 240 kg / 529 lb
Net weight 178 kg / 392.4 lb

FENIX NTM® Top option
Gross weight 240 kg / 529 lb
Net weight 178 kg / 392.4 lb

Dekton® Top option
Gross weight 263 kg / 579.8 lb
Net weight 202 kg / 445 lb

Item dimensions
(width x depth x height) 220 x 110 x 74 cm
86.5" x 43.25" x 29.25"

HEAVY FURNITURE

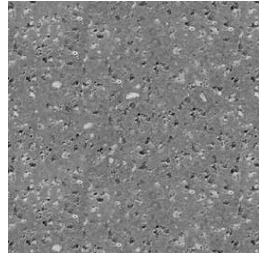
outdoor

frame / estructura

UHPC concrete



C1 stone



C2 slate



C3 terracotta

outdoor

top / tapa

HPL Trespa® - premium



320 silver quartzite - matt



323 natural chalkstone - matt



327 titanium bronze - satin



321 italian slate - matt

FENIX NTM®



029 bianco male



720 nero ingo

Dekton® - kraftizen



K1 albarium



K2 argentium



K3 umber



K4 micron

Dekton® - natural



D3 danae



D2 kelya

Talo outdoor

Rectangular dining table / mesa rectangular

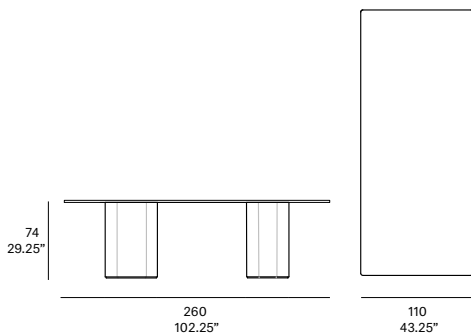
Altherr Désile Park, 2022

C700 260



Dining table with UHPC concrete base made up of natural mineral components and organic fibers (non-metallic), which ensure exceptional resistance to weathering. Tabletop options: HPL Trespa® 13 mm/0.51" thick, FENIX NTM® 12 mm/0.47" thick and Dekton® 12 mm/0.47" thick. Delivered unassembled.

Mesa de comedor con estructura de hormigón UHPC compuesto por una mezcla de componentes minerales naturales y fibras orgánicas (no metálicas) que aseguran una excepcional resistencia a la intemperie. Opciones de tablero: HPL Trespa® de 13 mm, FENIX NTM® de 12 mm y Dekton® de 12 mm. Se sirven desmontadas.



Shipment details

Qty 1 dining table (2 boxes)
Volume 0,84 m³ / 29.7 ft³

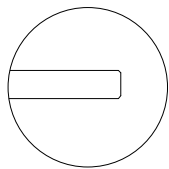
HPL Top option
Gross weight 254 kg / 560 lb
Net weight 187 kg / 412.3 lb

FENIX NTM® Top option
Gross weight 254 kg / 560 lb
Net weight 187 kg / 412.3 lb

Dekton® Top option
Gross weight 281 kg / 619.5 lb
Net weight 214 kg / 471.8 lb

Item dimensions (width x depth x height) 260 x 110 x 74 cm
102.25" x 43.25" x 29.25"

Tabletop options:



- HPL Trespa® 13 mm/0.51" thick .
- FENIX NTM® 12 mm/0.47" thick .
- Dekton® 12 mm/0.47" thick .

HEAVY FURNITURE

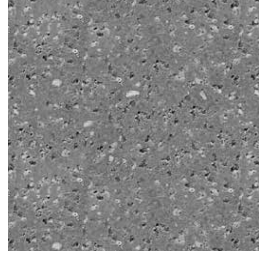
outdoor

frame / estructura

UHPC concrete



C1 stone



C2 slate



C3 terracotta

outdoor

top / tapa

HPL Trespa® - premium



320 silver quartzite - matt



323 natural chalkstone - matt

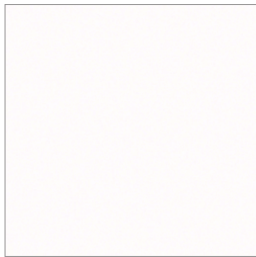


327 titanium bronze - satin



321 italian slate - matt

FENIX NTM®



029 bianco male



720 nero ingo

Dekton® - kraftizen



K1 albarium



K2 argentium



K3 umber



K4 micron

Dekton® - natural



D3 danae



D2 kelya

Talo outdoor

Rectangular dining table / mesa rectangular

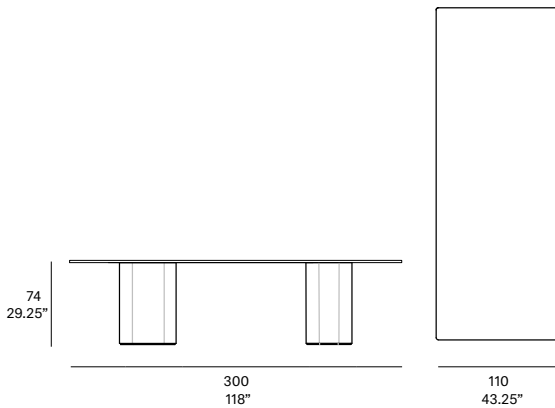
Altherr Désile Park, 2022

C700 300



Dining table with UHPC concrete base made up of natural mineral components and organic fibers (non-metallic), which ensure exceptional resistance to weathering. Tabletop options: HPL Trespa® 13 mm/0.51" thick, FENIX NTM® 12 mm/0.47" thick and Dekton® 8 mm/0.31" thick. Delivered unassembled

Mesa de comedor con estructura de hormigón UHPC compuesto por una mezcla de componentes minerales naturales y fibras orgánicas (no metálicas) que aseguran una excepcional resistencia a la intemperie. Opciones de tablero: HPL Trespa® de 13 mm, FENIX NTM® de 12 mm y Dekton® de 12 mm. Se sirven desmontadas.



Shipment details

Qty 1 dining table (2 boxes)
Volume 0,90 m³ / 31.8 ft³

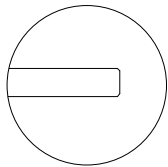
HPL Top option
Gross weight 148 kg / 326.3 lb
Net weight 195 kg / 268 lb

FENIX NTM® Top option
Gross weight 148 kg / 590.8 lb
Net weight 195 kg / 429.9 lb

Dekton® Top option
Gross weight 299 kg / 659.2 lb
Net weight 227 kg / 500.4 lb

Item dimensions
(width x depth x height) 300 x 110 x 74 cm
118" x 43.25" x 29.25"

Tabletop options:



- HPL Trespa® 13 mm/0.51" thick.
- FENIX NTM® 12 mm/0.47" thick.
- Dekton® 12 mm/0.47" thick.

HEAVY FURNITURE

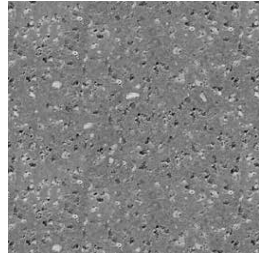
outdoor

frame / estructura

UHPC concrete



C1 stone



C2 slate



C3 terracotta

outdoor

top / tapa

HPL Trespa® - premium



320 silver quartzite - matt



323 natural chalkstone - matt

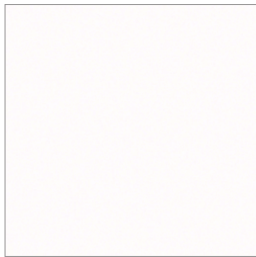


327 titanium bronze - satin



321 italian slate - matt

FENIX NTM®



029 bianco male



720 nero ingo

Dekton® - kraftizen



K1 albarium



K2 argentium



K3 umber

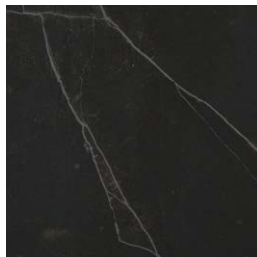


K4 micron

Dekton® - natural



D3 danae



D2 kelya

outdoor

Talo outdoor

Rectangular dining table / mesa rectangular

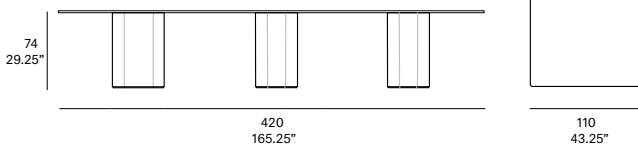
Altherr Désile Park, 2022

C700 420



Dining table with UHPC concrete base made up of natural mineral components and organic fibers (non-metallic), which ensure exceptional resistance to weathering. Tabletop options: HPL Trespa® 13 mm/0.51" thick and FENIX NTM® 12 mm/0.47" thick. Delivered unassembled.

Mesa de comedor con estructura de hormigón UHPC compuesto por una mezcla de componentes minerales naturales y fibras orgánicas (no metálicas) que aseguran una excepcional resistencia a la intemperie. Opciones de tablero: HPL Trespa® de 13 mm y FENIX NTM® de 12 mm. Se sirven desmontadas.



Shipment details

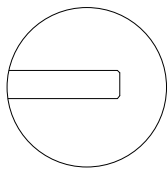
Qty 1 dining table (2 boxes)
Volume 1,27 m³ / 44.9ft³

HPL Top option
Gross weight 383 kg / 844.4 lb
Net weight 280 kg / 617.3 lb

FENIX NTM® Top option
Gross weight 383 kg / 844.4 lb
Net weight 280 kg / 617.3 lb

Item dimensions (width x depth x height) 300 x 110 x 74 cm
118" x 43.25" x 29.25"

Tabletop options:



- HPL Trespa® 13 mm/0.51" thick.
- FENIX NTM® 12 mm/0.47" thick.
- Dekton® 12 mm/0.47" thick.

HEAVY FURNITURE

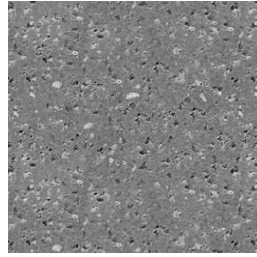
outdoor

frame / estructura

UHPC concrete



C1 stone



C2 slate



C3 terracotta

top / tapa

HPL Trespa® - premium



320 silver quartzite - matt



323 natural chalkstone - matt

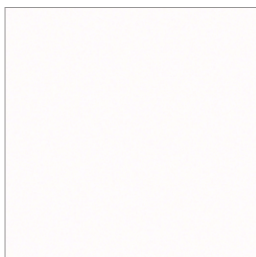


327 titanium bronze - satin

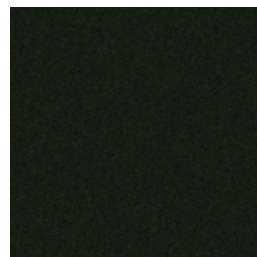


321 italian slate - matt

FENIX NTM®



029 bianco male



720 nero ingo

top / tapa

HPL Trespa® - premium



320 silver quartzite - matt



323 natural chalkstone - matt

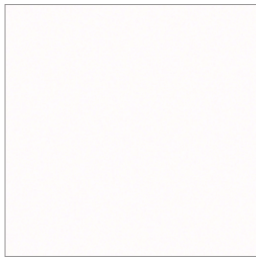


327 titanium bronze - satin



321 italian slate - matt

FENIX NTM®



029 bianco male



720 nero ingo

Dekton® - kraftizen



K1 albarium



K2 argentium



K3 umber

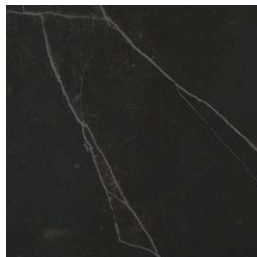


K4 micron

Dekton® - natural



D3 danae



D2 kelya