

outdoor

# Lapala

## Hand-woven barstool / taburete tejido

Lievore Altherr Molina 2015

C599 T



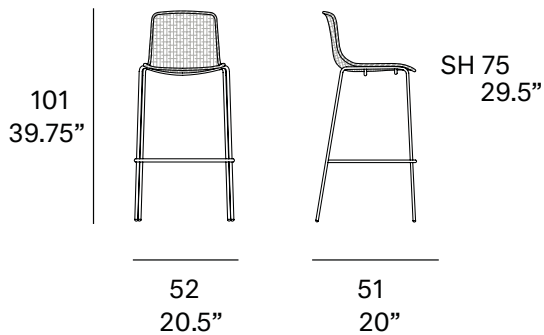
Barstool made of stainless steel tube. Hand-woven seat and backrest with high resistance rope 7 mm/0.27" thick. Legs made of lacquered stainless steel tube. Stackable.

Taburete de comedor fabricado en tubo de acero inoxidable. Asiento y respaldo tejidos a mano artesanalmente con cuerda de alta resistencia de 7 mm de sección. Patas fabricadas en tubo de acero inoxidable lacado. Apilable.

### Shipment details

Qty	2 barstools (1 box)
Volume	0,40 m <sup>3</sup> / 14.1 ft <sup>3</sup>
Gross weight	18 kg / 40 lb
Net weight (x1)	7 kg / 15 lb

Item dimensions (width x depth x height)	52 x 51 x 101 cm 20.5" x 20" x 39.75"
---	--



outdoor

frame / estructura

metallic finishes / metales



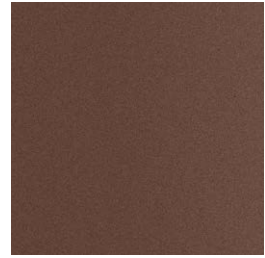
100 white



102 FT light grey  
fine textured



111 FT graphite  
fine textured



108 FT oxide  
fine textured



109 FT champagne  
fine textured



110 FT bronze  
fine textured



113 FT sage  
fine textured

outdoor

rope / cuerda

polyester rope - 7 mm / 0.27" thick



409 taupe



410 SPK orange



411 SPK dark orange



413 SPK oxide



401 black

polypropylene rope - 7 mm / 0.27" thick



420 SPK sand



422 SPK concrete



424 SPK ivy



426 SPK turquoise



427 forest green