

# Boutique Sofa

MARCEL WANDERS STUDIO

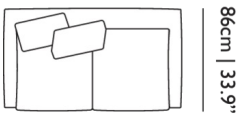


Conceived, developed and designed by Marcel Wanders studio for Moooi, the Boutique sofa is timeless. The Boutique sofa contours, dimensions and sheer comfort makes it highly sitter-friendly. With a unique artistic temperament and specially design fabrics & patters, it makes it the perfect sofa to brighten up your interior.

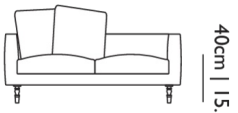
## *Boutique Sofa / Double Seater*

### *Dimensions*

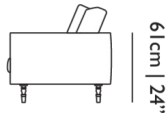
154cm | 60.6"



86cm | 33.9"



40cm | 15.7"



61cm | 24"

### *Product*

**WIDTH** 154cm | 60.6"

**HEIGHT** 45cm | 17.7"

**DEPTH** 86cm | 33.9"

### *Packaging*

**WIDTH** 88cm | 34.6"

**HEIGHT** 48cm | 18.9"

**CUBAGE** 0.65m<sup>3</sup> | 22.97ft<sup>3</sup>

**LENGTH** 154cm | 60.6"

**WEIGHT** 59.1kg | 130.29lbs

### *Technical*

#### **ADDITIONAL**

Pillows and legs to be ordered separately.

**MATERIAL**

Steel base construction, CMHR foam upholstered.

**HEIGHT ARMREST**

61cm | 24"

**SEAT HEIGHT**

40cm | 15.7"

**SEATING CAPACITY**

2

**SEAT DEPTH**

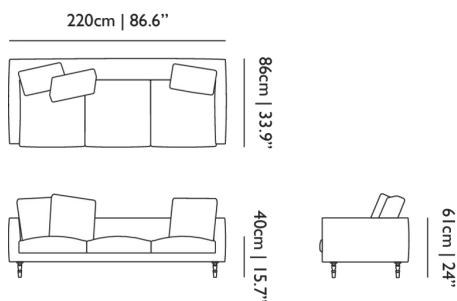
69cm | 27.2"

**SEAT WIDTH**

129cm | 50.8"

*Boutique Sofa / Triple Seater*

*Dimensions*



*Product*

**WIDTH** 220cm | 86.6"

**HEIGHT** 45cm | 17.7"

**DEPTH** 86cm | 33.9"

*Packaging*

**WIDTH** 88cm | 34.6"

**HEIGHT** 48cm | 18.9"

**CUBAGE** 0.93m<sup>3</sup> | 32.82ft<sup>3</sup>

**LENGTH** 220cm | 86.6"

**WEIGHT** 72kg | 158.73lbs

*Technical*

**ADDITIONAL**

Pillows and legs to be ordered separately.

**MATERIAL**

Steel base construction, CMHR foam upholstered.

**HEIGHT ARMREST**

61cm | 24"

**SEAT HEIGHT**

40cm | 15.7"

**SEATING CAPACITY**

3

**SEAT DEPTH**

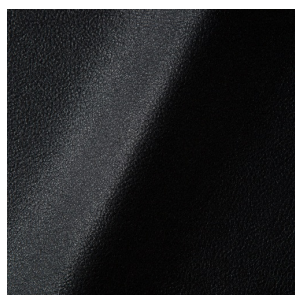
69cm | 27.2"

**SEAT WIDTH**

195cm | 76.8"

*Upholstery*

*ABBRACCI (available in 5 colours)*



**COMPOSITION**

100% PES

**ABRASION**

30000 martindale  
lightfastness 3 - 4  
pilling 5

**FIRE RESISTANCE**

BS 5852 - Ignition source  
0 (Cigarette)  
BS 5852 - Ignition source  
1 (Match flame equivalent)  
EN 1021-1 (Cigarette)  
EN 1021-2 (Match)  
TB 117-2013

*CANVAS 2 (available in 45 colours)*



**COMPOSITION**

90% WO, 10% PA

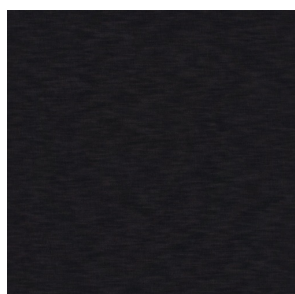
**ABRASION**

100000 martindale  
lightfastness 6  
pilling 4

**FIRE RESISTANCE**

BS 5852 - Ignition source  
1 (Match flame equivalent)  
BS 5852 - Ignition source  
0 (Cigarette)  
TB 117-2013  
EU Ecolabel

*DENIM (available in 3 colours)*



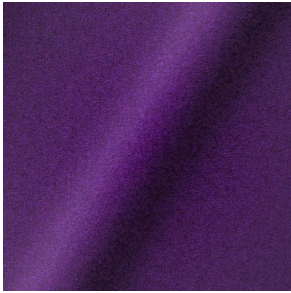
**COMPOSITION**

100% CO

**ABRASION**

70000 martindale  
lightfastness 4  
pilling 3 - 4

*DIVINA 3 (available in 56 colours)*



**COMPOSITION**  
100% WO

**ABRASION**  
45000 martindale  
lightfastness 7  
pilling 3

**FIRE RESISTANCE**  
BS 5852 - Ignition source  
0 (Cigarette)  
BS 5852 - Ignition source  
5 (Crib 5)  
BS 5852 - Ignition source  
1 (Match flame equivalent)  
EN 1021-1 (Cigarette)  
EN 1021-2 (Match)  
TB 117-2013  
EU Ecolabel

*DIVINA MD (available in 27 colours)*



**COMPOSITION**  
100% WO

**ABRASION**  
45000 martindale  
lightfastness 6  
pilling 3

**FIRE RESISTANCE**  
BS 5852 - Ignition source  
0 (Cigarette)  
BS 5852 - Ignition source  
5 (Crib 5)  
BS 5852 - Ignition source  
1 (Match flame equivalent)  
EN 1021-1 (Cigarette)  
EN 1021-2 (Match)  
EU Ecolabel

*DIVINA MELANGE 3 (available in 60 colours)*



**COMPOSITION**  
100% WO

**ABRASION**  
45000 martindale  
lightfastness 6 - 7  
pilling 3

**FIRE RESISTANCE**  
BS 5852 - Ignition source  
0 (Cigarette)  
BS 5852 - Ignition source  
5 (Crib 5)  
BS 5852 - Ignition source  
1 (Match flame equivalent)  
EN 1021-1 (Cigarette)  
EN 1021-2 (Match)  
TB 117-2013  
EU Ecolabel

*Bearded Leopard (available in 3 colours)*



**COMPOSITION**

77% CV, 15% PES, 7% CO,  
1% PA

**ABRASION**

15000 martindale  
lightfastness 4 - 6  
pilling 4

*Bison (available in 1 colours)*



*Dodo Pavone (available in 3 colours)*



**COMPOSITION**

12% CO, 88% PES

**ABRASION**

40000 martindale  
lightfastness 5  
pilling 4 - 5

*Menagerie of Extinct Animals (available in 2 colours)*



**COMPOSITION**

100% PES

**ABRASION**

50000 martindale  
lightfastness 4 - 6  
pilling 5

**FIRE RESISTANCE**

EN 1021-1 (Cigarette)  
EN 1021-2 (Match)  
TB 117-2013

*Rendezvous Tokyo Blue (available in 1 colours)*



**COMPOSITION**

100% PES

**ABRASION**

50000 martindale  
lightfastness 4 - 6  
pilling 5

*Blushing Sloth Melange Mohair (available in 1 colours)*



**COMPOSITION**

85% WV, 15% WM

**ABRASION**

15000 martindale  
lightfastness 4 - 6  
pilling 2 - 3

*Blushing Sloth Woolly Mohair (available in 1 colours)*



**COMPOSITION**

24% PES, 15% PA, 8% CO,  
24% WM, 29% WV

**ABRASION**

40000 martindale  
lightfastness 4 - 6  
pilling 3 - 4

*FIORD (available in 27 colours)*



**COMPOSITION**

92% WV, 8% PA

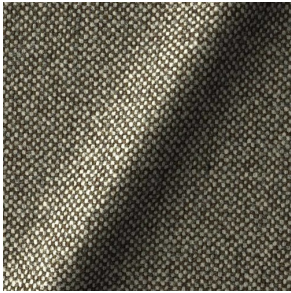
**ABRASION**

60000 martindale  
lightfastness 6  
pilling 4 - 5

**FIRE RESISTANCE**

EN 1021-1 (Cigarette)  
EN 1021-2 (Match)  
BS 5852 - Ignition source  
0 (Cigarette)  
BS 5852 - Ignition source  
1 (Match flame equivalent)

*HALLINGDAL 65 (available in 58 colours)*



**COMPOSITION**

30% CV, 70% WV

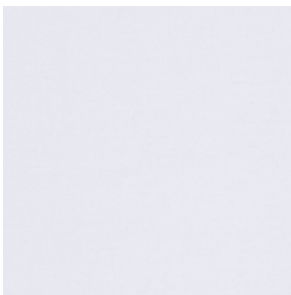
**ABRASION**

100000 martindale  
lightfastness 7  
pilling 3 - 4

**FIRE RESISTANCE**

BS 5852 - Ignition source  
0 (Cigarette)  
BS 5852 - Ignition source  
5 (Crib 5)  
BS 5852 - Ignition source  
1 (Match flame equivalent)  
EN 1021-1 (Cigarette)  
EN 1021-2 (Match)  
TB 117-2013  
EU Ecolabel

*HARALD 3 (available in 30 colours)*



**COMPOSITION**

100% CO

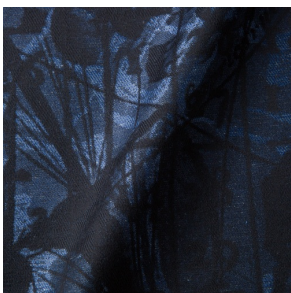
**ABRASION**

100000 martindale  
lightfastness 5  
pilling 4 - 5

**FIRE RESISTANCE**

EN 1021-1 (Cigarette)

*JACQUARD, ANDAZ (available in 1 colours)*



**COMPOSITION**

34% CO, 30% CV, 24%  
LI, 12% PA

**ABRASION**

25000 martindale  
lightfastness 4 - 6  
pilling 4 - 5

**FIRE RESISTANCE**

BS 5852 - Ignition source  
0 (Cigarette)  
BS 5852 - Ignition source  
1 (Match flame equivalent)  
EN 1021-1 (Cigarette)  
EN 1021-2 (Match)

*JACQUARD, FRESC (available in 1 colours)*



**COMPOSITION**

52% CV, 38% CO, 10% LI

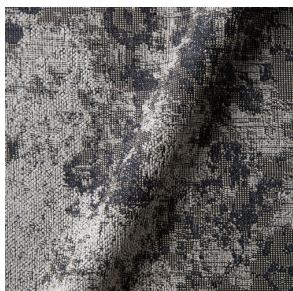
**ABRASION**

15000 martindale  
lightfastness 3 - 4  
pilling 2 - 3

**FIRE RESISTANCE**

BS 5852 - Ignition source  
0 (Cigarette)  
EN 1021-1 (Cigarette)  
EN 1021-2 (Match)

*JACQUARD, OLD (available in 2 colours)*



**COMPOSITION**

52% CV, 38% CO, 10% LI

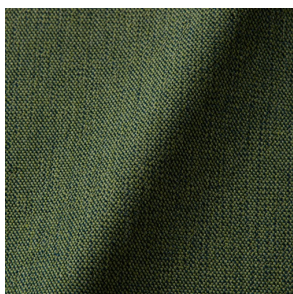
**ABRASION**

15000 martindale  
lightfastness 3 - 4  
pilling 2 - 3

**FIRE RESISTANCE**

BS 5852 - Ignition source  
0 (Cigarette)  
EN 1021-1 (Cigarette)  
EN 1021-2 (Match)

*JUSTO (available in 10 colours)*



**COMPOSITION**

15% CO, 35% PC, 10% PA,  
40% CV

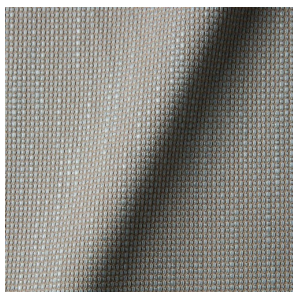
**ABRASION**

50000 martindale  
lightfastness 5  
pilling 4

**FIRE RESISTANCE**

EN 1021-1 (Cigarette)  
EN 1021-2 (Match)  
TB 117-2013

*MACCHEDIL GREZZO (available in 10 colours)*



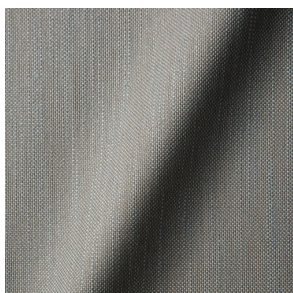
**COMPOSITION**

47% CO, 20% CV, 18%  
PA, 8% LI, 5% PC

**ABRASION**

15000 martindale  
lightfastness 3 - 5  
pilling 4 - 5

*MACCHEDIL SOTTILE (available in 10 colours)*



**COMPOSITION**

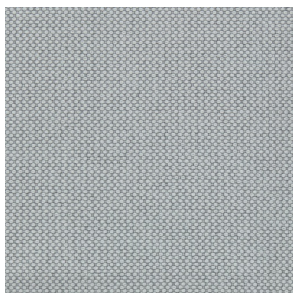
49% CV, 24% PES, 21% LI,  
6% CO

**ABRASION**

20000 martindale  
lightfastness 3 - 5  
pilling 2 - 3



*MERIT (available in 43 colours)*



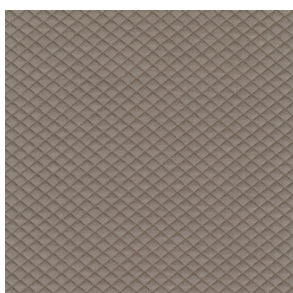
**COMPOSITION**

24% PES, 76%

**ABRASION**

85000 martindale  
lightfastness 7  
pilling 4

*MOSAIC 2 (available in 15 colours)*



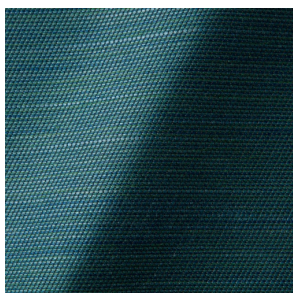
**COMPOSITION**

58% PES, 27% WV, 9% PA,  
6% EA

**ABRASION**

100000 martindale  
lightfastness 6 - 7  
pilling 4 - 5

*ORAY RAY (available in 15 colours)*



**COMPOSITION**

39% LI, 38% CV, 15% PE,  
8% CO

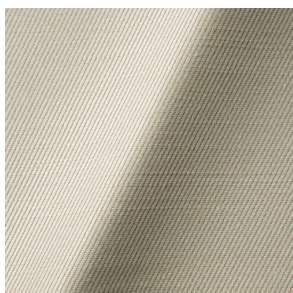
**ABRASION**

30000 martindale  
pilling 4 - 5

**FIRE RESISTANCE**

BS 5852 - Ignition source  
0 (Cigarette)  
BS 5852 - Ignition source  
1 (Match flame equivalent)  
TB 117-2013

*ORAY RONAN (available in 5 colours)*



**COMPOSITION**

39% LI, 38% CV, 15% PE,  
8% CO

**ABRASION**

30000 martindale  
pilling 4 - 5

**FIRE RESISTANCE**

BS 5852 - Ignition source  
0 (Cigarette)  
BS 5852 - Ignition source  
1 (Match flame equivalent)  
TB 117-2013

*PALETTE (available in 0 colours)*

**COMPOSITION**

42% CO, 29% WO

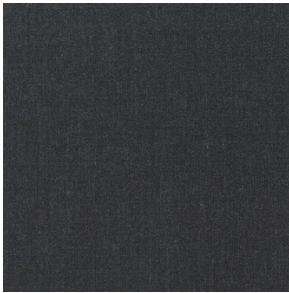
**ABRASION**

45000 martindale  
lightfastness 4 - 5  
pilling 3 - 3

**FIRE RESISTANCE**

BS 5852 - Ignition source  
0 (Cigarette)  
TB 117-2013  
BS 5852 - Ignition source  
5 (Crib 5)

*REMIX 3 (available in 53 colours)*



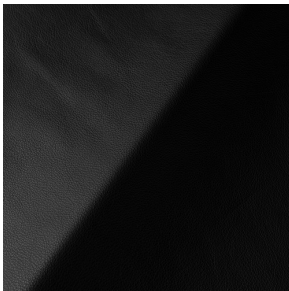
**COMPOSITION**

10% PA, 90% WV

**ABRASION**

100000 martindale  
lightfastness 5  
pilling 4

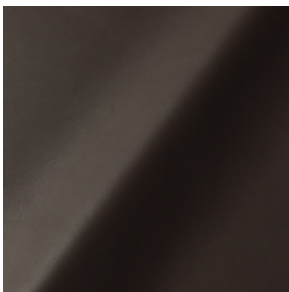
*SAVANNE (available in 3 colours)*



**FIRE RESISTANCE**

EN 1021-1 (Cigarette)  
EN 1021-2 (Match)  
TB 117-2013  
OEKO-TEX

*SHADE (available in 6 colours)*



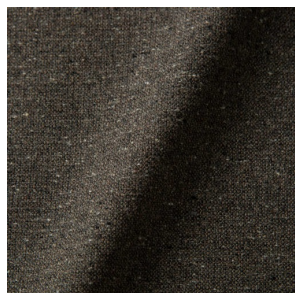
**ABRASION**

lightfastness 3 - 4

**FIRE RESISTANCE**

EN 1021-1 (Cigarette)  
EN 1021-2 (Match)  
TB 117-2013

*SOLIS (available in 9 colours)*



**COMPOSITION**

60% WO, 30% PES, 2%  
PA, 3% PC

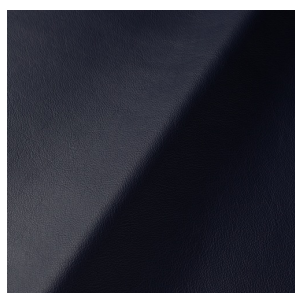
**ABRASION**

40000 martindale  
lightfastness 5  
pilling 3 - 4

**FIRE RESISTANCE**

EN 1021-1 (Cigarette)  
EN 1021-2 (Match)  
TB 117-2013

*SPECTRUM (available in 11 colours)*



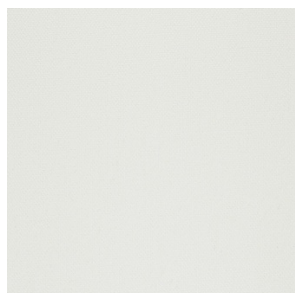
**ABRASION**

lightfastness 6 - 6

**FIRE RESISTANCE**

EN 1021-1 (Cigarette)  
EN 1021-2 (Match)  
TB 117-2013  
OEKO-TEX

*STEELCUT 2 (available in 37 colours)*



**COMPOSITION**

90% WV, 10% PA

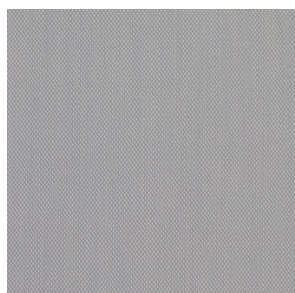
**ABRASION**

100000 martindale  
lightfastness 6  
pilling 3 - 4

**FIRE RESISTANCE**

BS 5852 - Ignition source  
0 (Cigarette)  
BS 5852 - Ignition source  
1 (Match flame equivalent)  
EN 1021-1 (Cigarette)  
EN 1021-2 (Match)  
TB 117-2013  
EU Ecolabel

*STEELCUT TRIO 3 (available in 54 colours)*



**COMPOSITION**

90% WV, 10% PA

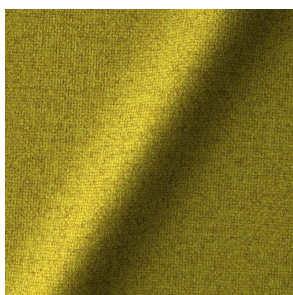
**ABRASION**

100000 martindale  
lightfastness 5  
pilling 4

**FIRE RESISTANCE**

BS 5852 - Ignition source  
0 (Cigarette)  
BS 5852 - Ignition source  
1 (Match flame equivalent)  
EN 1021-1 (Cigarette)  
EN 1021-2 (Match)  
EU Ecolabel

*TONICA 2 (available in 39 colours)*



**COMPOSITION**

100% WV

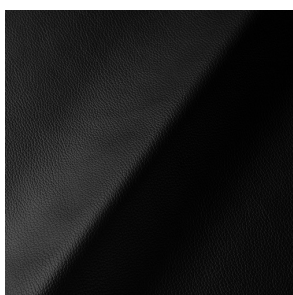
**ABRASION**

45000 martindale  
lightfastness 6 - 7  
pilling 4 - 5

**FIRE RESISTANCE**

EN 1021-1 (Cigarette)  
EN 1021-2 (Match)

*ULTRA (available in 6 colours)*



**ABRASION**

lightfastness 6 - 7

**FIRE RESISTANCE**

EN 1021-1 (Cigarette)  
EN 1021-2 (Match)  
TB 117-2013  
ANSI/BIFMA M7.1 (Total  
Volatile Organic  
Compounds)

*VESPER (available in 8 colours)*



**COMPOSITION**

10% CO, 40% LI, 10% PA,  
10% PES, 30% CV

**ABRASION**

40000 martindale  
lightfastness 5  
pilling 4

**FIRE RESISTANCE**

EN 1021-1 (Cigarette)  
EN 1021-2 (Match)  
TB 117-2013