

Boutique Footstool

MARCEL WANDERS STUDIO



Conceived, developed and designed by Marcel Wanders studio for Moooi, the Boutique sofa is timeless. The Boutique sofa contours, dimensions and sheer comfort makes it highly sitter-friendly. With a unique artistic temperament and specially design fabrics & patters, it makes it the perfect sofa to brighten up your interior.

Detailing

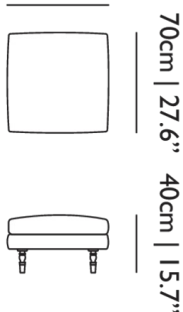


The Boutique Footstool is characterized by the fact that its cover and legs can be changed.

Boutique Footstool / Footstool

Dimensions

70cm | 27.6"



Product

WIDTH 70cm | 27.6"

HEIGHT 24cm | 9.4"

DEPTH 70cm | 27.6"

Packaging

WIDTH 70cm | 27.6"

HEIGHT 30cm | 11.8"

CUBAGE 0.15m³ | 5.19ft³

LENGTH 70cm | 27.6"

WEIGHT 16kg | 35.27lbs

Technical

ADDITIONAL

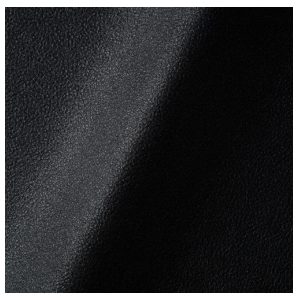
Legs to be ordered separately. Cat I-LIII: fixed upholstery.

MATERIAL

Steel base construction, CMHR foam upholstered. Signature cover: fabric is teflon treated and has a fire retardant coating

Upholstery

ABBRACCI (available in 5 colours)



COMPOSITION

100% PES

ABRASION

30000 martindale
lightfastness 3 - 4
pilling 5

FIRE RESISTANCE

BS 5852 - Ignition source
0 (Cigarette)
BS 5852 - Ignition source
1 (Match flame equivalent)
EN 1021-1 (Cigarette)
EN 1021-2 (Match)
TB 117-2013

CANVAS 2 (available in 45 colours)



COMPOSITION

90% WO, 10% PA

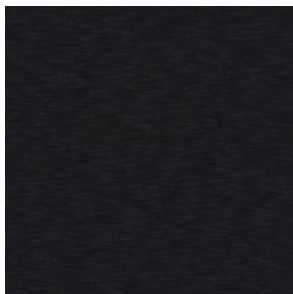
ABRASION

100000 martindale
lightfastness 6
pilling 4

FIRE RESISTANCE

BS 5852 - Ignition source
1 (Match flame equivalent)
BS 5852 - Ignition source
0 (Cigarette)
TB 117-2013
EU Ecolabel

DENIM (available in 3 colours)



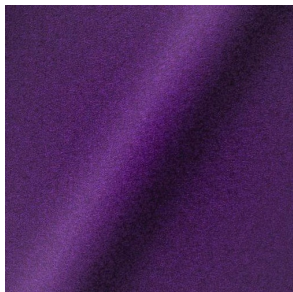
COMPOSITION

100% CO

ABRASION

70000 martindale
lightfastness 4
pilling 3 - 4

DIVINA 3 (available in 56 colours)



COMPOSITION

100% WO

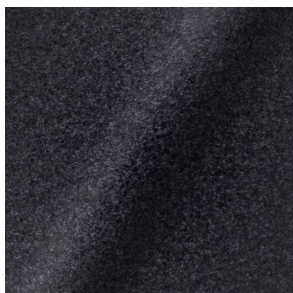
ABRASION

45000 martindale
lightfastness 7
pilling 3

FIRE RESISTANCE

BS 5852 - Ignition source
0 (Cigarette)
BS 5852 - Ignition source
5 (Crib 5)
BS 5852 - Ignition source
1 (Match flame equivalent)
EN 1021-1 (Cigarette)
EN 1021-2 (Match)
TB 117-2013
EU Ecolabel

DIVINA MD (available in 27 colours)



COMPOSITION

100% WO

ABRASION

45000 martindale
lightfastness 6
pilling 3

FIRE RESISTANCE

BS 5852 - Ignition source
0 (Cigarette)
BS 5852 - Ignition source
5 (Crib 5)
BS 5852 - Ignition source
1 (Match flame equivalent)
EN 1021-1 (Cigarette)
EN 1021-2 (Match)
EU Ecolabel

DIVINA MELANGE 3 (available in 60 colours)



COMPOSITION

100% WO

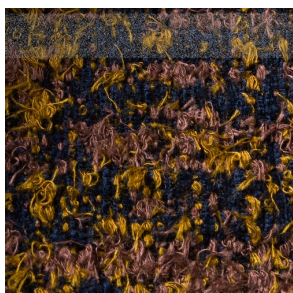
ABRASION

45000 martindale
lightfastness 6 - 7
pilling 3

FIRE RESISTANCE

BS 5852 - Ignition source
0 (Cigarette)
BS 5852 - Ignition source
5 (Crib 5)
BS 5852 - Ignition source
1 (Match flame equivalent)
EN 1021-1 (Cigarette)
EN 1021-2 (Match)
TB 117-2013
EU Ecolabel

Bearded Leopard (available in 3 colours)



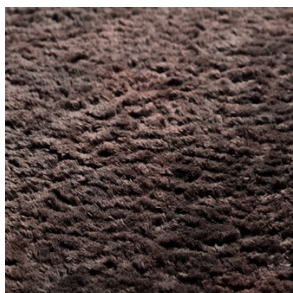
COMPOSITION

77% CV, 15% PES, 7% CO,
1% PA

ABRASION

15000 martindale
lightfastness 4 - 6
pilling 4

Bison (available in 1 colours)



Dodo Pavone (available in 3 colours)



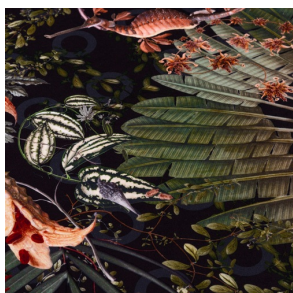
COMPOSITION

12% CO, 88% PES

ABRASION

40000 martindale
lightfastness 5
pilling 4 - 5

Menagerie of Extinct Animals (available in 2 colours)



COMPOSITION

100% PES

ABRASION

50000 martindale
lightfastness 4 - 6
pilling 5

FIRE RESISTANCE

EN 1021-1 (Cigarette)
EN 1021-2 (Match)
TB 117-2013

Rendezvous Tokyo Blue (available in 1 colours)



COMPOSITION

100% PES

ABRASION

50000 martindale
lightfastness 4 - 6
pilling 5

Blushing Sloth Melange Mohair (available in 1 colours)



COMPOSITION

85% WV, 15% WM

ABRASION

15000 martindale
lightfastness 4 - 6
pilling 2 - 3

Blushing Sloth Woolly Mohair (available in 1 colours)



COMPOSITION

24% PES, 15% PA, 8% CO,
24% WM, 29% WV

ABRASION

40000 martindale
lightfastness 4 - 6
pilling 3 - 4

FIORD (available in 27 colours)



COMPOSITION

92% WV, 8% PA

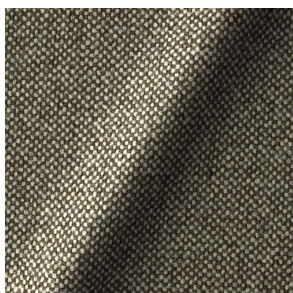
ABRASION

60000 martindale
lightfastness 6
pilling 4 - 5

FIRE RESISTANCE

EN 1021-1 (Cigarette)
EN 1021-2 (Match)
BS 5852 - Ignition source
0 (Cigarette)
BS 5852 - Ignition source
1 (Match flame equivalent)

HALLINGDAL 65 (available in 58 colours)



COMPOSITION

30% CV, 70% WV

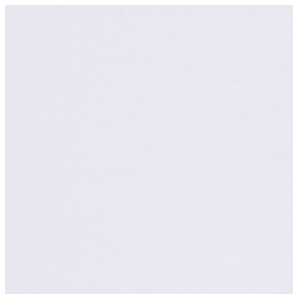
ABRASION

100000 martindale
lightfastness 7
pilling 3 - 4

FIRE RESISTANCE

BS 5852 - Ignition source
0 (Cigarette)
BS 5852 - Ignition source
5 (Crib 5)
BS 5852 - Ignition source
1 (Match flame equivalent)
EN 1021-1 (Cigarette)
EN 1021-2 (Match)
TB 117-2013
EU Ecolabel

HARALD 3 (available in 30 colours)

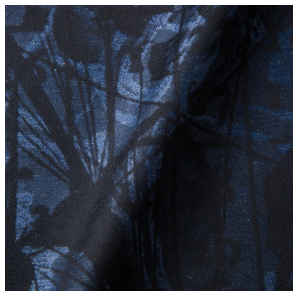


COMPOSITION
100% CO

ABRASION
100000 martindale
lightfastness 5
pilling 4 - 5

FIRE RESISTANCE
EN 1021-1 (Cigarette)

JACQUARD, ANDAZ (available in 1 colours)

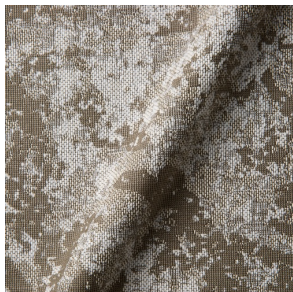


COMPOSITION
34% CO, 30% CV, 24%
LI, 12% PA

ABRASION
25000 martindale
lightfastness 4 - 6
pilling 4 - 5

FIRE RESISTANCE
BS 5852 - Ignition source
0 (Cigarette)
BS 5852 - Ignition source
1 (Match flame equivalent)
EN 1021-1 (Cigarette)
EN 1021-2 (Match)

JACQUARD, FRESC (available in 1 colours)

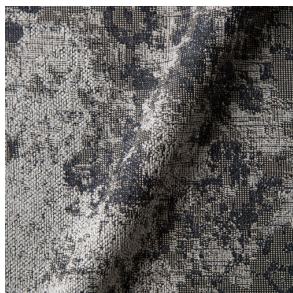


COMPOSITION
52% CV, 38% CO, 10% LI

ABRASION
15000 martindale
lightfastness 3 - 4
pilling 2 - 3

FIRE RESISTANCE
BS 5852 - Ignition source
0 (Cigarette)
EN 1021-1 (Cigarette)
EN 1021-2 (Match)

JACQUARD, OLD (available in 2 colours)

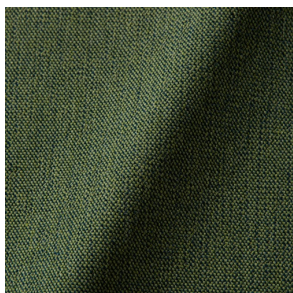


COMPOSITION
52% CV, 38% CO, 10% LI

ABRASION
15000 martindale
lightfastness 3 - 4
pilling 2 - 3

FIRE RESISTANCE
BS 5852 - Ignition source
0 (Cigarette)
EN 1021-1 (Cigarette)
EN 1021-2 (Match)

JUSTO (available in 10 colours)



COMPOSITION

15% CO, 35% PC, 10% PA,
40% CV

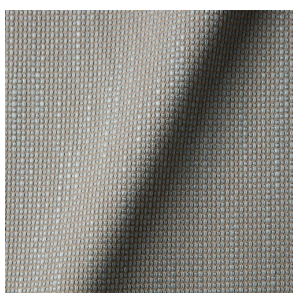
ABRASION

50000 martindale
lightfastness 5
pilling 4

FIRE RESISTANCE

EN 1021-1 (Cigarette)
EN 1021-2 (Match)
TB 117-2013

MACCHEDIL GREZZO (available in 10 colours)



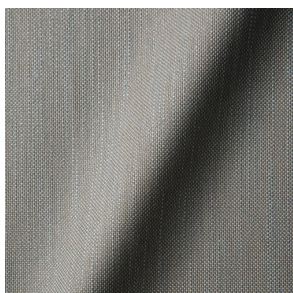
COMPOSITION

47% CO, 20% CV, 18%
PA, 8% LI, 5% PC

ABRASION

15000 martindale
lightfastness 3 - 5
pilling 4 - 5

MACCHEDIL SOTTILE (available in 10 colours)



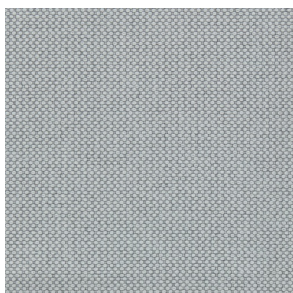
COMPOSITION

49% CV, 24% PES, 21% LI,
6% CO

ABRASION

20000 martindale
lightfastness 3 - 5
pilling 2 - 3

MERIT (available in 43 colours)



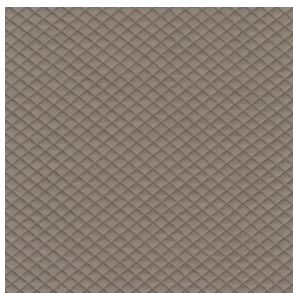
COMPOSITION

24% PES, 76%

ABRASION

85000 martindale
lightfastness 7
pilling 4

MOSAIC 2 (available in 15 colours)



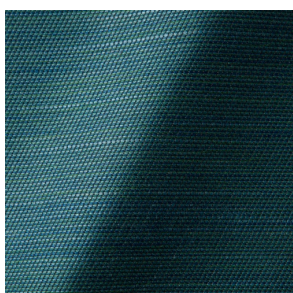
COMPOSITION

58% PES, 27% WV, 9% PA,
6% EA

ABRASION

100000 martindale
lightfastness 6 - 7
pilling 4 - 5

ORAY RAY (available in 15 colours)



COMPOSITION

39% LI, 38% CV, 15% PE,
8% CO

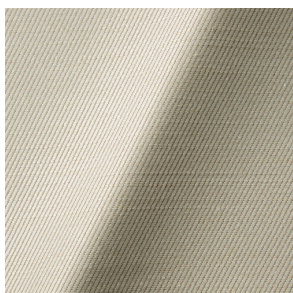
ABRASION

30000 martindale
pilling 4 - 5

FIRE RESISTANCE

BS 5852 - Ignition source
0 (Cigarette)
BS 5852 - Ignition source
1 (Match flame equivalent)
TB 117-2013

ORAY RONAN (available in 5 colours)



COMPOSITION

39% LI, 38% CV, 15% PE,
8% CO

ABRASION

30000 martindale
pilling 4 - 5

FIRE RESISTANCE

BS 5852 - Ignition source
0 (Cigarette)
BS 5852 - Ignition source
1 (Match flame equivalent)
TB 117-2013

PALETTE (available in 24 colours)

COMPOSITION

42% CO, 29% WO, 29%
TL

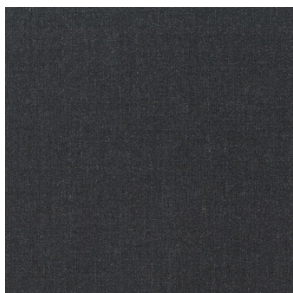
ABRASION

45000 martindale
lightfastness 4 - 5
pilling 3 - 3

FIRE RESISTANCE

BS 5852 - Ignition source
0 (Cigarette)
TB 117-2013
BS 5852 - Ignition source
5 (Crib 5)

REMIX 3 (available in 53 colours)



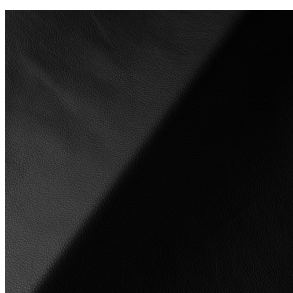
COMPOSITION

10% PA, 90% WV

ABRASION

100000 martindale
lightfastness 5
pilling 4

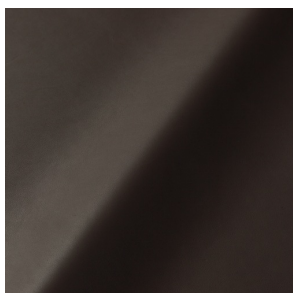
SAVANNE (available in 3 colours)



FIRE RESISTANCE

EN 1021-1 (Cigarette)
EN 1021-2 (Match)
TB 117-2013
OEKO-TEX

SHADE (available in 6 colours)



ABRASION

lightfastness 3 - 4

FIRE RESISTANCE

EN 1021-1 (Cigarette)
EN 1021-2 (Match)
TB 117-2013

SOLIS (available in 9 colours)



COMPOSITION

60% WO, 30% PES, 2%
PA, 3% PC

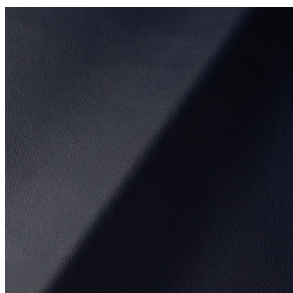
ABRASION

40000 martindale
lightfastness 5
pilling 3 - 4

FIRE RESISTANCE

EN 1021-1 (Cigarette)
EN 1021-2 (Match)
TB 117-2013

SPECTRUM (available in 11 colours)



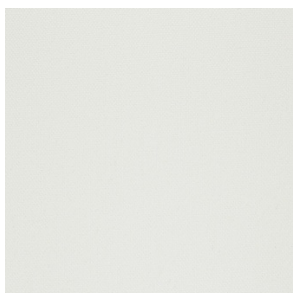
ABRASION

lightfastness 6 - 6

FIRE RESISTANCE

EN 1021-1 (Cigarette)
EN 1021-2 (Match)
TB 117-2013
OEKO-TEX

STEELCUT 2 (available in 37 colours)



COMPOSITION

90% WV, 10% PA

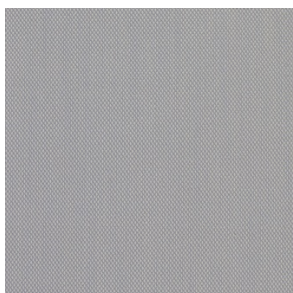
ABRASION

100000 martindale
lightfastness 6
pilling 3 - 4

FIRE RESISTANCE

BS 5852 - Ignition source
0 (Cigarette)
BS 5852 - Ignition source
1 (Match flame equivalent)
EN 1021-1 (Cigarette)
EN 1021-2 (Match)
TB 117-2013
EU Ecolabel

STEELCUT TRIO 3 (available in 54 colours)



COMPOSITION

90% WV, 10% PA

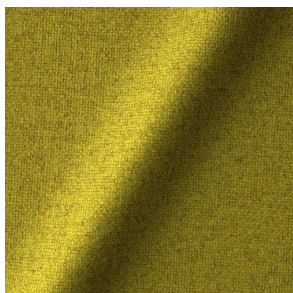
ABRASION

100000 martindale
lightfastness 5
pilling 4

FIRE RESISTANCE

BS 5852 - Ignition source
0 (Cigarette)
BS 5852 - Ignition source
1 (Match flame equivalent)
EN 1021-1 (Cigarette)
EN 1021-2 (Match)
EU Ecolabel

TONICA 2 (available in 39 colours)



COMPOSITION

100% WV

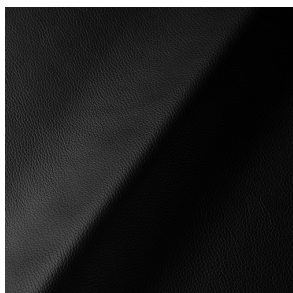
ABRASION

45000 martindale
lightfastness 6 - 7
pilling 4 - 5

FIRE RESISTANCE

EN 1021-1 (Cigarette)
EN 1021-2 (Match)

ULTRA (available in 6 colours)



ABRASION

lightfastness 6 - 7

FIRE RESISTANCE

EN 1021-1 (Cigarette)
EN 1021-2 (Match)
TB 117-2013
ANSI/BIFMA M7.1 (Total
Volatile Organic
Compounds)

VESPER (available in 8 colours)



COMPOSITION

10% CO, 40% LI, 10% PA,
10% PES, 30% CV

ABRASION

40000 martindale
lightfastness 5
pilling 4

FIRE RESISTANCE

EN 1021-1 (Cigarette)
EN 1021-2 (Match)
TB 117-2013