

m o o o i

## Bart Armchair

MOOOI WORKS



One of the members of the Bart Family collection couldn't quite sit still and developed a look around, comfortably and in style. The roundness of the armchair's design is completed by the circular motion, which also adds another dimension to its coziness and to our freedom of movement. Are you too active or inspired to sit still? Swivel your Bart armchair around & enjoy another point of view!

---

### *Detailing*



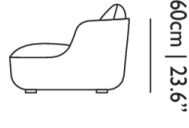
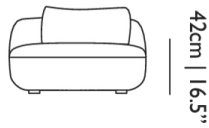
Square angles are tempered and smoothed into the round coziness of curved shapes & features for extra comfort.

---

### *Bart Armchair Basic*

### Dimensions

95cm | 37.4"



### Product

**WIDTH** 95cm | 37.4"

**HEIGHT** 60cm | 23.6"

**DEPTH** 95cm | 37.4"

### Packaging

**WIDTH** 0cm | 0"

**HEIGHT** 0cm | 0"

**CUBAGE** 0m<sup>3</sup> | 0ft<sup>3</sup>

**LENGTH** 0cm | 0"

**WEIGHT** 0cm | 0lbs

### Technical

#### MATERIAL

Wooden frame covered in foam and dacron, foam seat.

#### HEIGHT ARMREST

60cm | 23.6"

#### SEAT HEIGHT

42cm | 16.5"

#### SEAT DEPTH

69cm | 27.2"

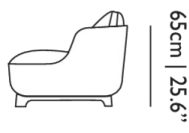
#### SEAT WIDTH

82cm | 32.3"

## Bart Armchair Canape

### Dimensions

95cm | 37.4"



### Product

**WIDTH** 95cm | 37.4"

**HEIGHT** 60cm | 23.6"

**DEPTH** 95cm | 37.4"

### Packaging

**WIDTH** 0cm | 0"

**HEIGHT** 0cm | 0"

**CUBAGE** 0m<sup>3</sup> | 0ft<sup>3</sup>

**LENGTH** 0cm | 0"

**WEIGHT** 0cm | 0lbs

### Technical

#### MATERIAL

Wooden frame covered in foam and dacron, foam seat.

#### HEIGHT ARMREST

65cm | 25.6"

#### SEAT DEPTH

74cm | 29.1"

**SEAT HEIGHT**  
47cm | 18.5"

**SEAT WIDTH**  
82cm | 32.3"

## Bart Armchair Swivel

### Dimensions

95cm | 37.4"



95cm | 37.4"



42cm | 16.5"



60cm | 23.6"

### Product

**WIDTH** 95cm | 37.4"  
**HEIGHT** 60cm | 23.6"  
**DEPTH** 95cm | 37.4"

### Packaging

**WIDTH** 0cm | 0"  
**HEIGHT** 0cm | 0"  
**CUBAGE** 0m<sup>3</sup> | 0ft<sup>3</sup>  
**LENGTH** 0cm | 0"  
**WEIGHT** 0cm | 0lbs

### Technical

#### MATERIAL

Wooden frame covered in foam and dacron, foam seat.

**HEIGHT ARMREST**  
60cm | 23.6"

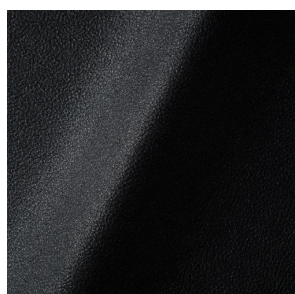
**SEAT DEPTH**  
69cm | 27.2"

**SEAT HEIGHT**  
42cm | 16.5"

**SEAT WIDTH**  
82cm | 32.3"

## Upholstery

*ABBRACCI (available in 5 colours)*



**COMPOSITION**  
100% PES

**ABRASION**  
30000 martindale  
lightfastness 3 - 4  
pilling 5

**FIRETEST**  
BS5852 part 1 on request  
TB117-2013

*ARREDO (available in 2 colours)*



*BOUCLE (available in 4 colours)*



**COMPOSITION**

43% CO, 14% PA, 12% CV,  
3% PES, 28% PAN

**ABRASION**

20000 martindale  
lightfastness 4 - 6  
pilling 4 - 5

**FIRETEST**

BS5852 part 1 on request

*BYRAM (available in 19 colours)*



**COMPOSITION**

100% WM

**ABRASION**

70000 martindale  
lightfastness 4 - 5  
pilling 4

**FIRETEST**

BS5852 part 1  
TB117-2013

*CANVAS 2 (available in 45 colours)*



**COMPOSITION**

90% WO, 10% PA

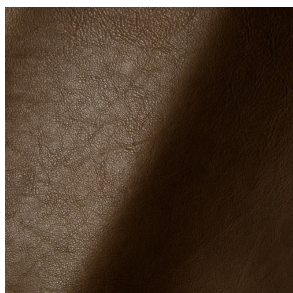
**ABRASION**

100000 martindale  
lightfastness 6  
pilling 4

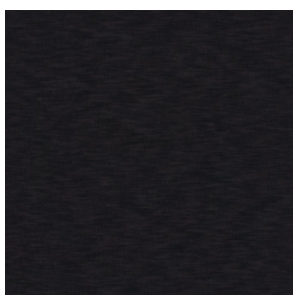
**FIRETEST**

BS5852 part 1 on request  
TB117-2013

*CERVINO (available in 5 colours)*



*DENIM (available in 4 colours)*



**COMPOSITION**

100% CO

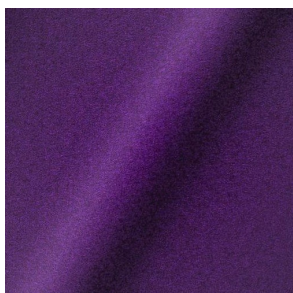
**ABRASION**

70000 martindale  
lightfastness 4  
pilling 3 - 4

**FIRETEST**

BS5852 part 1 on request  
TB117-2013

*DIVINA 3 (available in 57 colours)*



**COMPOSITION**

100% WO

**ABRASION**

45000 martindale  
lightfastness 7  
pilling 3

**FIRETEST**

BS5852 part 1 on request  
TB117-2013

*DIVINA MD (available in 27 colours)*



**COMPOSITION**

100% WO

**ABRASION**

45000 martindale  
lightfastness 6  
pilling 3

**FIRETEST**

BS5852 part 1 on request  
TB117-2013

*DIVINA MELANGE 3 (available in 65 colours)*



**COMPOSITION**

100% WO

**ABRASION**

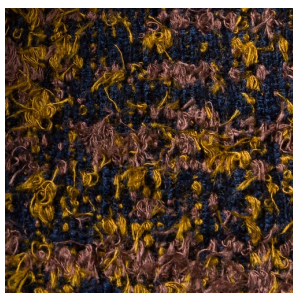
45000 martindale  
lightfastness 6 - 7  
pilling 3

**FIRETEST**

BS5852 part 1 on request  
TB117-2013

---

*Bearded Leopard (available in 2 colours)*



**COMPOSITION**

77% CV, 15% PES, 7% CO,  
1% PA

**ABRASION**

15000 martindale  
lightfastness 4 - 6  
pilling 4

**FIRETEST**

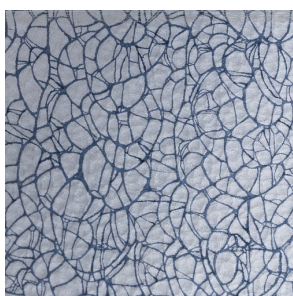
BS5852 part 1 on request  
TB117-2013

---

*Bison (available in 1 colours)*

---

*Armoured Boar, Cracked (available in 1 colours)*

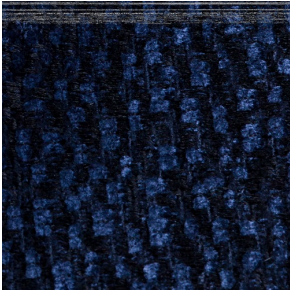


*Armoured Boar, Hairy (available in 1 colours)*



---

*Armoured Boar (available in 2 colours)*



**COMPOSITION**

64% CV, 21% PES, 15%  
CO

**ABRASION**

50000 martindale  
lightfastness 4 - 6  
pilling 5

**FIRETEST**

BS5852 part 1 on request  
TB117-2013

---

*Dodo Pavone (available in 2 colours)*



**COMPOSITION**

12% CO, 88% PES

**ABRASION**

40000 martindale  
lightfastness 5  
pilling 4 - 5

**FIRETEST**

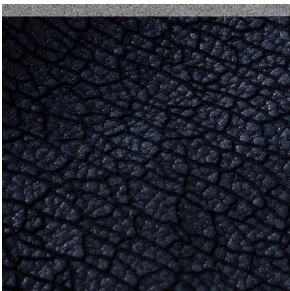
BS5852 part 1 on request  
TB117-2013

---

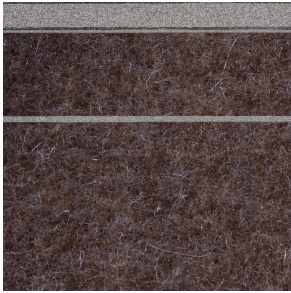
*Dwarf Rhino Buffed (available in 1 colours)*



*Dwarf Rhino, Crackle (available in 1 colours)*



*Blushing Sloth Melange Mohair (available in 1 colours)*



**COMPOSITION**

85% WV, 15% WM

**ABRASION**

15000 martindale  
lightfastness 4 - 6  
pilling 2 - 3

**FIRETEST**

BS5852 part 1 on request  
TB117-2013

*Blushing Sloth Woolly Mohair (available in 2 colours)*



**COMPOSITION**

24% PES, 15% PA, 8% CO,  
24% WM, 29% WV

**ABRASION**

40000 martindale  
lightfastness 4 - 6  
pilling 3 - 4

**FIRETEST**

BS5852 part 1 on request  
TB117-2013

*FIORD (available in 27 colours)*

**COMPOSITION**

92% WV, 8% PA

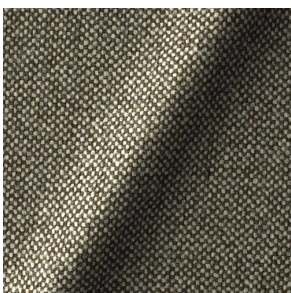
**ABRASION**

60000 martindale  
lightfastness 6  
pilling 4 - 5

**FIRETEST**

BS5852 part 1 on request  
TB117-2013

*HALLINGDAL 65 (available in 58 colours)*



**COMPOSITION**

30% CV, 70% WV

**ABRASION**

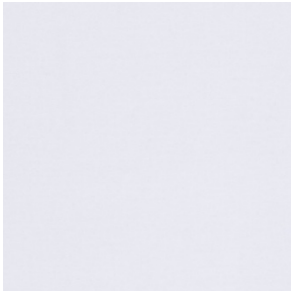
100000 martindale  
lightfastness 7  
pilling 3 - 4

**FIRETEST**

BS5852 part 1



*HARALD 3 (available in 30 colours)*



**COMPOSITION**  
100% CO

**ABRASION**  
100000 martindale  
lightfastness 5  
pilling 4 - 5

---

*JUSTO (available in 20 colours)*



**COMPOSITION**  
15% CO, 35% PC, 10% PA,  
40% CV

**ABRASION**  
50000 martindale  
lightfastness 5  
pilling 4

**FIRETEST**  
BS5852 part 1 on request  
TB117-2013

---

*LISCIO (available in 23 colours)*



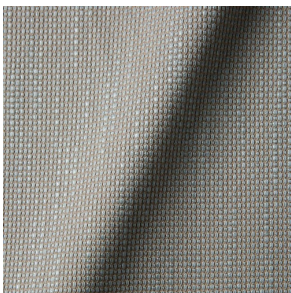
**COMPOSITION**  
35% WO, 35% CV, 21%  
CO, 9% PA

**ABRASION**  
30000 martindale  
lightfastness 4 - 6  
pilling 4

**FIRETEST**  
BS5852 part 1 on request  
TB117-2013

---

*MACCHEDIL GREZZO (available in 21 colours)*

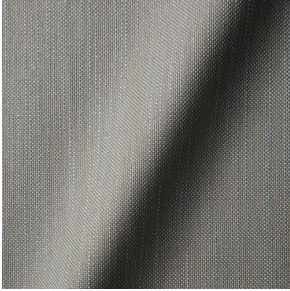


**COMPOSITION**  
47% CO, 20% CV, 18%  
PA, 8% LI, 5% PC

**ABRASION**  
15000 martindale  
lightfastness 3 - 5  
pilling 4 - 5

**FIRETEST**  
BS5852 part 1 on request

*MACCHEDIL SOTTILE (available in 11 colours)*



**COMPOSITION**

49% CV, 24% PES, 21% LI,  
6% CO

**ABRASION**

20000 martindale  
lightfastness 3 - 5  
pilling 2 - 3

**FIRETEST**

BS5852 part 1 on request

---

*MERIT (available in 43 colours)*

**COMPOSITION**

24% PES, 76%

**ABRASION**

85000 martindale  
lightfastness 7  
pilling 4

---

*MOSAIC 2 (available in 15 colours)*

**COMPOSITION**

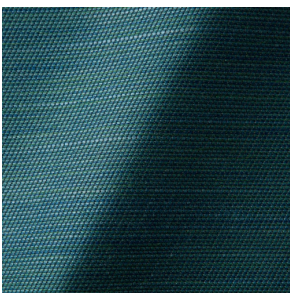
58% PES, 27% WV, 9% PA,  
6% EA

**ABRASION**

100000 martindale  
lightfastness 6 - 7  
pilling 4 - 5

---

*ORAY RAY (available in 31 colours)*



**COMPOSITION**

39% LI, 38% CV, 15% PE,  
8% CO

**ABRASION**

30000 martindale  
pilling 4 - 5

**FIRETEST**

BS5852 part 1 on request  
TB117-2013

---

*ORAY RONAN (available in 11 colours)*



**COMPOSITION**

39% LI, 38% CV, 15% PE,  
8% CO

**ABRASION**

30000 martindale  
pilling 4 - 5

**FIRETEST**

BS5852 part 1 on request  
TB117-2013

---

*REMIX 2 (available in 49 colours)*



**COMPOSITION**

90% WV, 10% PA

**ABRASION**

100000 martindale  
lightfastness 5  
pilling 4

**FIRETEST**

TB117-2013

---

*SOLIS (available in 18 colours)*



**COMPOSITION**

60% WO, 30% PES, 2%  
PA, 3% PC

**ABRASION**

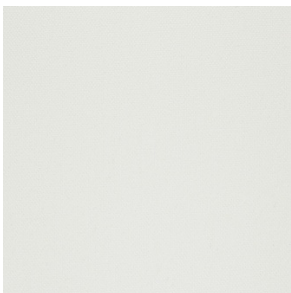
40000 martindale  
lightfastness 5  
pilling 3 - 4

**FIRETEST**

BS5852 part 1 on request  
TB117-2013

---

*STEELCUT 2 (available in 37 colours)*



**COMPOSITION**

90% WV, 10% PA

**ABRASION**

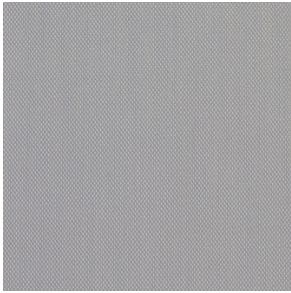
100000 martindale  
lightfastness 6  
pilling 3 - 4

**FIRETEST**

TB117-2013

---

*STEELCUT TRIO 3 (available in 54 colours)*



**COMPOSITION**

90% WV, 10% PA

**ABRASION**

100000 martindale  
lightfastness 5  
pilling 4

**FIRETEST**

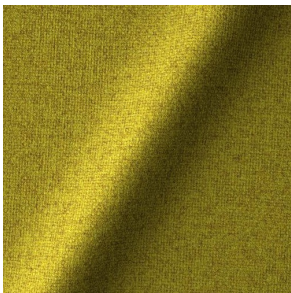
TB117-2013

---

*SUMMIT MELANGE (available in 9 colours)*

*SUMMIT UNI (available in 9 colours)*

*TONICA 2 (available in 39 colours)*



**COMPOSITION**

100% WV

**ABRASION**

45000 martindale  
lightfastness 6 - 7  
pilling 4 - 5

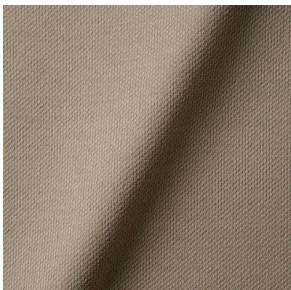
**FIRETEST**

TB117-2013

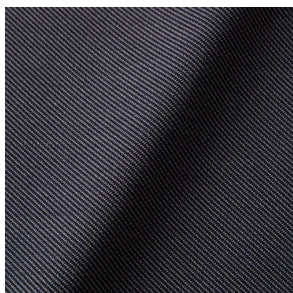
---

*TRICKLE (available in 8 colours)*

*TWILL (available in 9 colours)*



*TWILL MELANGE (available in 9 colours)*



---

*VELOUR (available in 5 colours)*

---

*VESPER (available in 16 colours)*



**COMPOSITION**

10% CO, 40% LI, 10% PA,  
10% PES, 30% CV

**ABRASION**

40000 martindale  
lightfastness 5  
pilling 4

**FIRETEST**

BS5852 part 1 on request  
TB117-2013

---