

m o o o i[®]



BFF Sofa

by Marcel Wanders

The BFF Sofa by Marcel Wanders is everyone's new best friend! A high quality, soft yet firm modular sofa system, consisting of a wide variety of modules for endless configurations.

Designer

Marcel Wanders

Year of design

2019

Vesper

composition

10% CO, 40% L, 10% PA, 10% PL, 30% VI

abrasion

40.000 Martindale rubs, EN ISO 12947

lightfastness

Note 5, EN ISO 105-B02

firetest

EN 1021-1/2

US. Cal. Bull. 117-2013

Upon request, with treatment:

BS5852 part I

BS5852 crib5



Vesper
Aluminium



Vesper
Brass



Vesper
Bronze



Vesper
Carbon



Vesper
Nickel



Vesper
Silver



Vesper
Steel



Vesper
Titan

m o o o i[®]

Macchedil, Sottile

composition

49% vi, 24% pl, 21% li, 6% co

abrasion

30.000 martindale

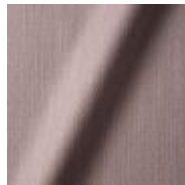
lightfastness 4

firetest

EN1021 I&2



Macchedil Sottile
Black indigo



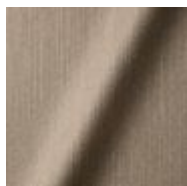
Macchedil Sottile
Pinkish



Macchedil Sottile
Off white



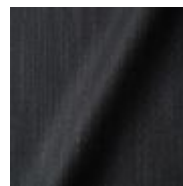
Macchedil So
Light grey



Macchedil Sottile
Light brown



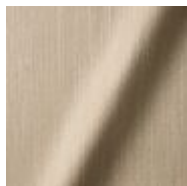
Macchedil Sottile
Grey grey



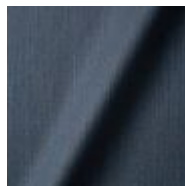
Macchedil Sottile
Anthracite



Macchedil So
Blue grey



Macchedil Sottile
Cappuccino



Macchedil Sottile
Deep blue

m o o o i[®]

Macchedil, Grezzo

composition

47% co, 20% vi, 18% pi, 8% li, 5% pc, 2% af

abrasion

18.000 martindale

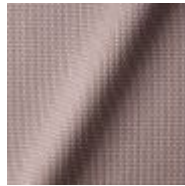
lightfastness 4

firetest

EN1021 I&2



Macchedil Grezzo
Black indigo



Macchedil Grezzo
Pinkish



Macchedil Grezzo
Off white



Macchedil Grezzo
Light grey



Macchedil Grezzo
Light brown



Macchedil Grezzo
Grey grey



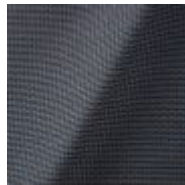
Macchedil Grezzo
Anthracite



Macchedil Grezzo
Blue grey



Macchedil Grezzo
Cappuccino



Macchedil Grezzo
Deepblue

m o o o i[®]

Solis

composition

2% PA 3% PC 30% PL 65% WO

abrasion

40.000 Martindale rubs, EN ISO 12947

lightfastness

Note 5, EN ISO 105-B02

firetest

EN 1021-1/2

US. Cal. Bull. 117-2013

Upon request, with treatment:

BS5852 part1

BS5852 crib5



Solis
Crust



Solis
Dawn



Solis
Fog



Solis
Gray



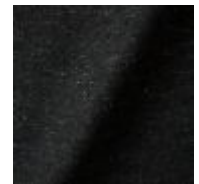
Solis
Paper



Solis
Rain



Solis
Spencer



Solis
Suit



Solis
Sunset

m o o o i[®]

Bouclé

composition

43% co, 28% pan, 14% pa, 12% vi, 3% pl

abrasion

20.000> martindale

lightfastness 4

firetest

EN1021 I&2



Bouclé
Black white



Bouclé
Rainbow



Bouclé
Brown



Bouclé
Blue

Jacquard andaz

composition:

34% cotton - 30% viscose - 24% linen - 12% polyamide

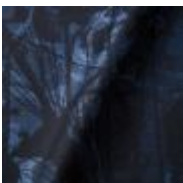
abrasion:

25000 martindale

lightfastness 4-5

firetest:

BS EN 1021 I&2



Jacquard
Andaz

m o o o i[®]

Jaquard Fresco

composition

40% vi ,36% co, 14% pl, 10% li

abrasion

20.000> martindale

lightfastness 4-5

firetest

EN1021 I&2



Jaquard
Fresco

Jacquard Old Black & Blue

composition

52% vi, 38% co, 10% li

abrasion

20.000> martindale

lightfastness 4-5

firetest

EN1021 I&2



Jaquard
Old Blue



Jaquard
Old Black

m o o o i[®]

Justo

composition

15% CO, 35% PC, 10% PL, 40% VI

abrasion

50.000 Martindale rubs, EN ISO 12947

lightfastness

Note 5, EN ISO 105-B02

fire test

EN 1021-1/2

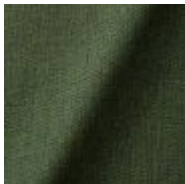
US. Cal. Bull. 117-2013

NFPA 260

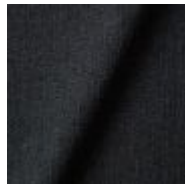
Upon request, with treatment:

BS5852 part I

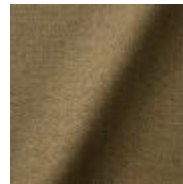
BS5852 crib5



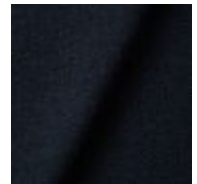
Justo
Alge



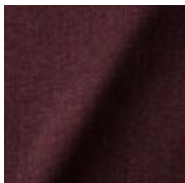
Justo
Bazalt



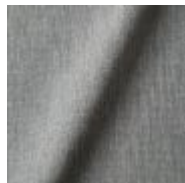
Justo
Bred



Justo
Flod



Justo
Hinde



Justo
Lyse



Justo
Muse



Justo
Nat



Justo
Sennep



Justo
Sten

m o o o i[®]

Liscio

composition

35% WO / 35% CV / 21% CO / 9% PA

abrasion

30.000 Martindale

lightfastness

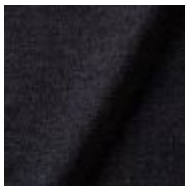
4-6

firetest

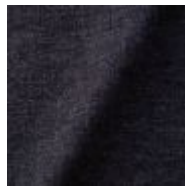
US. Cal. Bull. 117-2013

Upon request, with treatment:

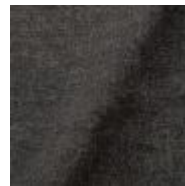
BS5852 part I



Liscio
**Grigio Blu
Scuro**



Liscio
Grigio Blu



Liscio
Grigio Scuro



Liscio
Muscio Scuro



Liscio
Muscio



Liscio
Argento



Liscio
Nebbia



Liscio
Pietra



Liscio
Perla



Liscio
Latte Scuro



Liscio
Latte

m o o o i®

Twill

composition

72% wo, 8% pa, 20% pl

abrasion

75.000 martindale

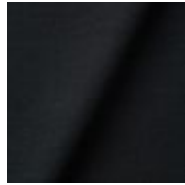
lightfastness 5

firetest

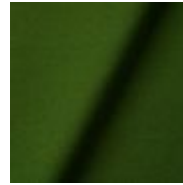
EN1021 I&2



Twill
Caviar



Twill
Graphite



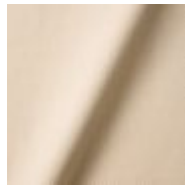
Twill
Grass



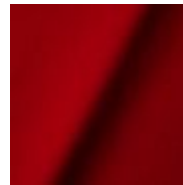
Twill
Grey



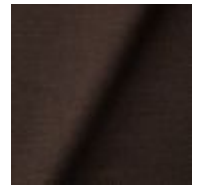
Twill
Linen



Twill
Natural



Twill
Passion



Twill
Walnut

m o o o i[®]

Twill Melange

composition

60% WO / 20% PES / 20% PA

abrasion

80.000 martindale

lightfastness 6-7

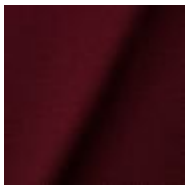
firetest

EN1021-1/2

US. Cal. Bull. 117-2013

BS5852 part I

DIN 4102-B2



Twill Melange
Chili



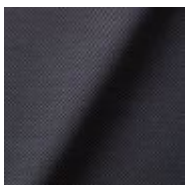
Twill Melange
Dust



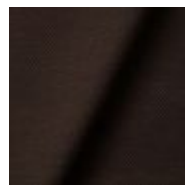
Twill Melange
Flour



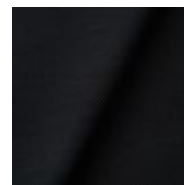
Twill Melange
Lagoon



Twill Melange
Lavender



Twill Melange
Peat



Twill Melange
Slate



Twill Melange
Twig

m o o o i[®]

Bearded leopard Jacquard

composition

77% VI / 15% PES / 7% CO / 1% PA

abrasion

15.000 Martindale rubs, EN ISO 12947

lightfastness

Note 4-6, EN ISO 105-B02

firetest

EN1021-1/2

Upon request and with treatment:

BS5852 part I



Blushing Sloth Woolly Mohair

composition

85% WV / 15% WM

abrasion

15.000 Martindale rubs, EN ISO 12947

lightfastness

Note 4-6, EN ISO 105-B02

firetest

EN1021-1/2

BS5852 part I

m o o o i[®]



**Extinct
Animals
Fabric**

Collection

Blushing Sloth

Woolly Mohair

Blushing Sloth Melange Mohair

composition

29% LANA / 24% LANA WM / 24% PES / 15% PA / 8% CO

abrasion

40.000 Martindale rubs, EN ISO 12947

lightfastness

Note 4-6, EN ISO 105-B02



m o o o i[®]

Dodo Pavone

composition

12% CO 88% PL

abrasion

40.000 Martindale rubs, EN ISO 12947

lightfastness

Note 5, EN ISO 105-B02

firetest

US. Cal. Bull. 117-2013

Upon request, with treatment:

BS5852 part I



The Silent Bison Velvet

composition

100% CO

abrasion

30.000 Martindale rubs, EN ISO 12947

lightfastness

Note 4-6, EN ISO 105-B02



m o o o i®

Calligraphy Bird Jacquard

composition

64% VI, 21% PES, 15% CO

abrasion

50.000 Martindale rubs, EN ISO 12947

lightfastness

Note 4-6, EN ISO 105-B02

firetest

Upon request, with treatment;
BS5852 part I



Extinct Animals
Fabric Collection
Calligraphy Bird
Jacquard

Flying Coral Fish Scaled



**Extinct
Animals
Fabric
Collection**
Flying Coral Fish
Scaled

Type
Pure aniline,
nubuck finish

m o o o i[®]

Dwarf Rhino Buffed

composition

100% steer

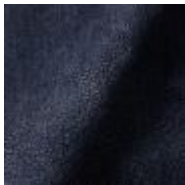
Type

Pure aniline, nubuck finish



Extinct Animals
Fabric Collection
Dwarf Rhino
Buffed

Dwarf Rhino Crackle



**Extinct
Animals
Fabric
Collection**
Dwarf Rhino
Crackle

m o o o i[®]

Armoured Boar Crackle

composition

100% cow hide

Type of leather

Pure aniline, nubuck finish



Kvadrat Fabrics

Kvadrat Fabrics

Selected Moooi products can be upholstered with a collection of Kvadrat fabrics. Kvadrat designs high-quality upholstery, in an extensive range of colours and textures.

Go to our Kvadrat fabrics page for a full overview of all fabric families you can choose from.



Image not found or type unknown