

# BFF Footstool

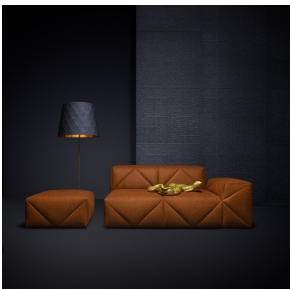
MARCEL WANDERS STUDIO



The award-winning BFF Sofa by Marcel Wanders studio is everyone's new best friend! A high quality, soft yet firm modular sofa system, consisting of a wide variety of modules for endless configurations.

---

## *Detailing*

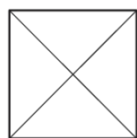


BFF Footstool is available in more than 325 fabrics.

## BFF Footstool / Footstool

### Dimensions

66cm | 24"



66cm | 24"



36cm | 14.2"

### Product

**WIDTH** 66cm | 26"

**HEIGHT** 36cm | 14.2"

**DEPTH** 66cm | 26"

### Packaging

**WIDTH** 70cm | 27.6"

**HEIGHT** 40cm | 15.7"

**CUBAGE** 0.29m<sup>3</sup> | 10.28ft<sup>3</sup>

**LENGTH** 104cm | 40.9"

**WEIGHT** 16kg | 35.27lbs

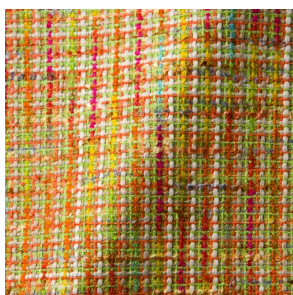
### Technical

#### MATERIAL

Wooden frame, steel springs, foam.

### Upholstery

#### BOUCLE (available in 4 colours)



#### COMPOSITION

43% CO, 14% PA, 12% CV,  
3% PES, 28% PAN

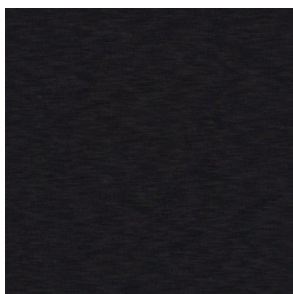
#### ABRASION

20000 martindale  
lightfastness 4 - 6  
pilling 4 - 5

#### FIRE RESISTANCE

EN 1021-1 (Cigarette)  
EN 1021-2 (Match)

#### DENIM (available in 3 colours)



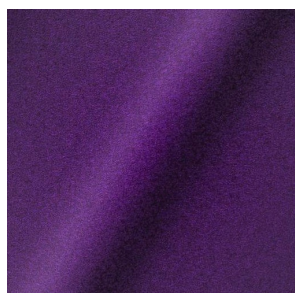
#### COMPOSITION

100% CO

#### ABRASION

70000 martindale  
lightfastness 4  
pilling 3 - 4

*DIVINA 3 (available in 56 colours)*



**COMPOSITION**

100% WO

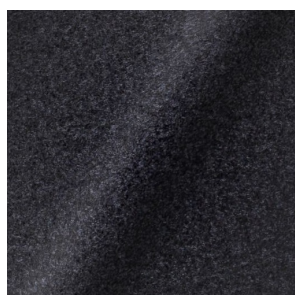
**ABRASION**

45000 martindale  
lightfastness 7  
pilling 3

**FIRE RESISTANCE**

BS 5852 - Ignition source  
0 (Cigarette)  
BS 5852 - Ignition source  
5 (Crib 5)  
BS 5852 - Ignition source  
1 (Match flame equivalent)  
EN 1021-1 (Cigarette)  
EN 1021-2 (Match)  
TB 117-2013  
EU Ecolabel

*DIVINA MD (available in 27 colours)*



**COMPOSITION**

100% WO

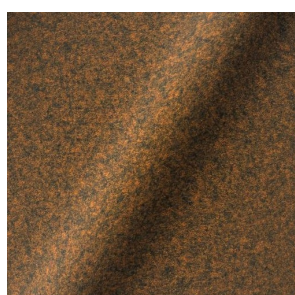
**ABRASION**

45000 martindale  
lightfastness 6  
pilling 3

**FIRE RESISTANCE**

BS 5852 - Ignition source  
0 (Cigarette)  
BS 5852 - Ignition source  
5 (Crib 5)  
BS 5852 - Ignition source  
1 (Match flame equivalent)  
EN 1021-1 (Cigarette)  
EN 1021-2 (Match)  
EU Ecolabel

*DIVINA MELANGE 3 (available in 60 colours)*



**COMPOSITION**

100% WO

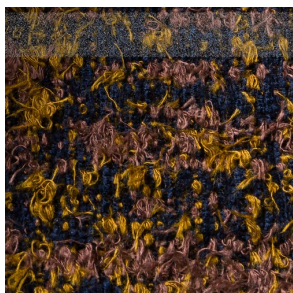
**ABRASION**

45000 martindale  
lightfastness 6 - 7  
pilling 3

**FIRE RESISTANCE**

BS 5852 - Ignition source  
0 (Cigarette)  
BS 5852 - Ignition source  
5 (Crib 5)  
BS 5852 - Ignition source  
1 (Match flame equivalent)  
EN 1021-1 (Cigarette)  
EN 1021-2 (Match)  
TB 117-2013  
EU Ecolabel

*Bearded Leopard (available in 3 colours)*



**COMPOSITION**

77% CV, 15% PES, 7% CO,  
1% PA

**ABRASION**

15000 martindale  
lightfastness 4 - 6  
pilling 4

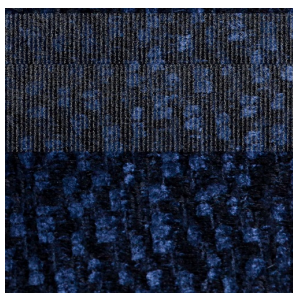
*Bison (available in 1 colours)*



*Armoured Boar, Crackle (available in 1 colours)*



*Calligraphy Bird (available in 4 colours)*



**COMPOSITION**

64% CV, 21% PES, 15%  
CO

**ABRASION**

50000 martindale  
lightfastness 4 - 6  
pilling 5

*Dodo Pavone (available in 3 colours)*



**COMPOSITION**

12% CO, 88% PES

**ABRASION**

40000 martindale

lightfastness 5

pilling 4 - 5

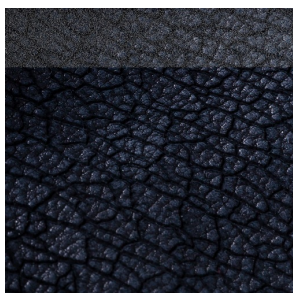
---

*Dwarf Rhino Buffed (available in 0 colours)*



---

*Dwarf Rhino, Crackle (available in 1 colours)*



---

*Blushing Sloth Melange Mohair (available in 1 colours)*



**COMPOSITION**

85% WV, 15% WM

**ABRASION**

15000 martindale

lightfastness 4 - 6

pilling 2 - 3



*Blushing Sloth Woolly Mohair (available in 1 colours)*



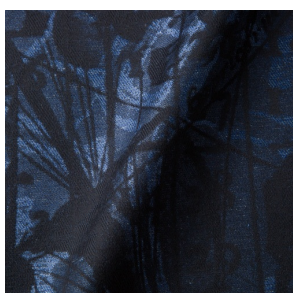
**COMPOSITION**

24% PES, 15% PA, 8% CO,  
24% WM, 29% WV

**ABRASION**

40000 martindale  
lightfastness 4 - 6  
pilling 3 - 4

*JACQUARD, ANDAZ (available in 1 colours)*



**COMPOSITION**

34% CO, 30% CV, 24%  
LI, 12% PA

**ABRASION**

25000 martindale  
lightfastness 4 - 6  
pilling 4 - 5

**FIRE RESISTANCE**

BS 5852 - Ignition source  
0 (Cigarette)  
BS 5852 - Ignition source  
1 (Match flame equivalent)  
EN 1021-1 (Cigarette)  
EN 1021-2 (Match)

*JACQUARD, FRESC (available in 1 colours)*



**COMPOSITION**

52% CV, 38% CO, 10% LI

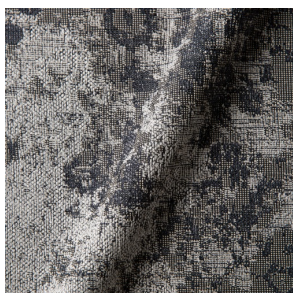
**ABRASION**

15000 martindale  
lightfastness 3 - 4  
pilling 2 - 3

**FIRE RESISTANCE**

BS 5852 - Ignition source  
0 (Cigarette)  
EN 1021-1 (Cigarette)  
EN 1021-2 (Match)

*JACQUARD, OLD (available in 2 colours)*



**COMPOSITION**

52% CV, 38% CO, 10% LI

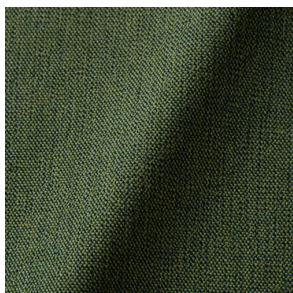
**ABRASION**

15000 martindale  
lightfastness 3 - 4  
pilling 2 - 3

**FIRE RESISTANCE**

BS 5852 - Ignition source  
0 (Cigarette)  
EN 1021-1 (Cigarette)  
EN 1021-2 (Match)

*JUSTO (available in 10 colours)*



**COMPOSITION**

15% CO, 35% PC, 10% PA,  
40% CV

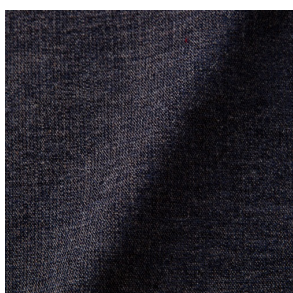
**ABRASION**

50000 martindale  
lightfastness 5  
pilling 4

**FIRE RESISTANCE**

EN 1021-1 (Cigarette)  
EN 1021-2 (Match)  
TB 117-2013

*LISCIO (available in 11 colours)*



**COMPOSITION**

35% WO, 35% CV, 21%  
CO, 9% PA

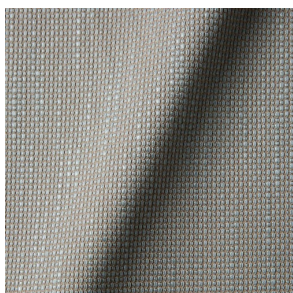
**ABRASION**

30000 martindale  
lightfastness 4 - 6  
pilling 4

**FIRE RESISTANCE**

TB 117-2013

*MACCHEDIL GREZZO (available in 10 colours)*



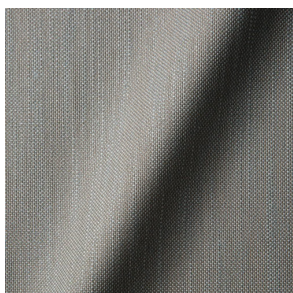
**COMPOSITION**

47% CO, 20% CV, 18%  
PA, 8% LI, 5% PC

**ABRASION**

15000 martindale  
lightfastness 3 - 5  
pilling 4 - 5

*MACCHEDIL SOTTILE (available in 10 colours)*



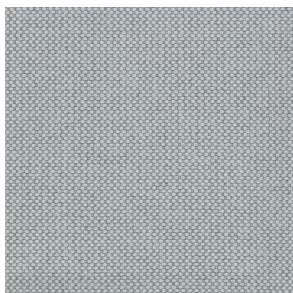
**COMPOSITION**

49% CV, 24% PES, 21% LI,  
6% CO

**ABRASION**

20000 martindale  
lightfastness 3 - 5  
pilling 2 - 3

*MERIT (available in 43 colours)*



**COMPOSITION**

24% PES, 76%

**ABRASION**

85000 martindale  
lightfastness 7  
pilling 4

*PALETTE (available in 24 colours)*

**COMPOSITION**

42% CO, 29% WO, 29%  
TL

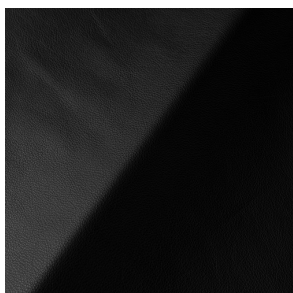
**ABRASION**

45000 martindale  
lightfastness 4 - 5  
pilling 3 - 3

**FIRE RESISTANCE**

BS 5852 - Ignition source  
0 (Cigarette)  
TB 117-2013  
BS 5852 - Ignition source  
5 (Crib 5)

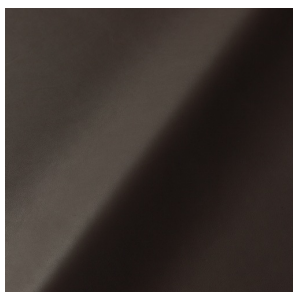
*SAVANNE (available in 3 colours)*



**FIRE RESISTANCE**

EN 1021-1 (Cigarette)  
EN 1021-2 (Match)  
TB 117-2013  
OEKO-TEX

*SHADE (available in 6 colours)*



**ABRASION**

lightfastness 3 - 4

**FIRE RESISTANCE**

EN 1021-1 (Cigarette)  
EN 1021-2 (Match)  
TB 117-2013



*SOLIS (available in 9 colours)*



**COMPOSITION**

60% WO, 30% PES, 2%  
PA, 3% PC

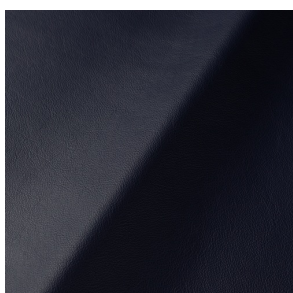
**ABRASION**

40000 martindale  
lightfastness 5  
pilling 3 - 4

**FIRE RESISTANCE**

EN 1021-1 (Cigarette)  
EN 1021-2 (Match)  
TB 117-2013

*SPECTRUM (available in 11 colours)*



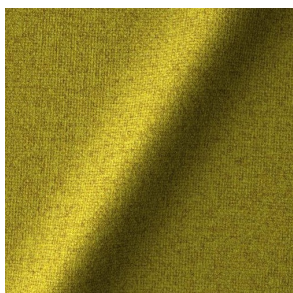
**ABRASION**

lightfastness 6 - 6

**FIRE RESISTANCE**

EN 1021-1 (Cigarette)  
EN 1021-2 (Match)  
TB 117-2013  
OEKO-TEX

*TONICA 2 (available in 39 colours)*



**COMPOSITION**

100% WV

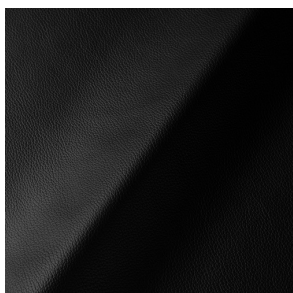
**ABRASION**

45000 martindale  
lightfastness 6 - 7  
pilling 4 - 5

**FIRE RESISTANCE**

EN 1021-1 (Cigarette)  
EN 1021-2 (Match)

*ULTRA (available in 6 colours)*



**ABRASION**

lightfastness 6 - 7

**FIRE RESISTANCE**

EN 1021-1 (Cigarette)  
EN 1021-2 (Match)  
TB 117-2013  
ANSI/BIFMA M7.1 (Total  
Volatile Organic  
Compounds)

*VESPER (available in 8 colours)*



**COMPOSITION**

10% CO, 40% LI, 10% PA,  
10% PES, 30% CV

**ABRASION**

40000 martindale  
lightfastness 5  
pilling 4

**FIRE RESISTANCE**

EN 1021-1 (Cigarette)  
EN 1021-2 (Match)  
TB 117-2013

---