

Base Kitchen  
Sink top,  
by Kettal Studio

# Sink top

Designer  
Kettal Studio

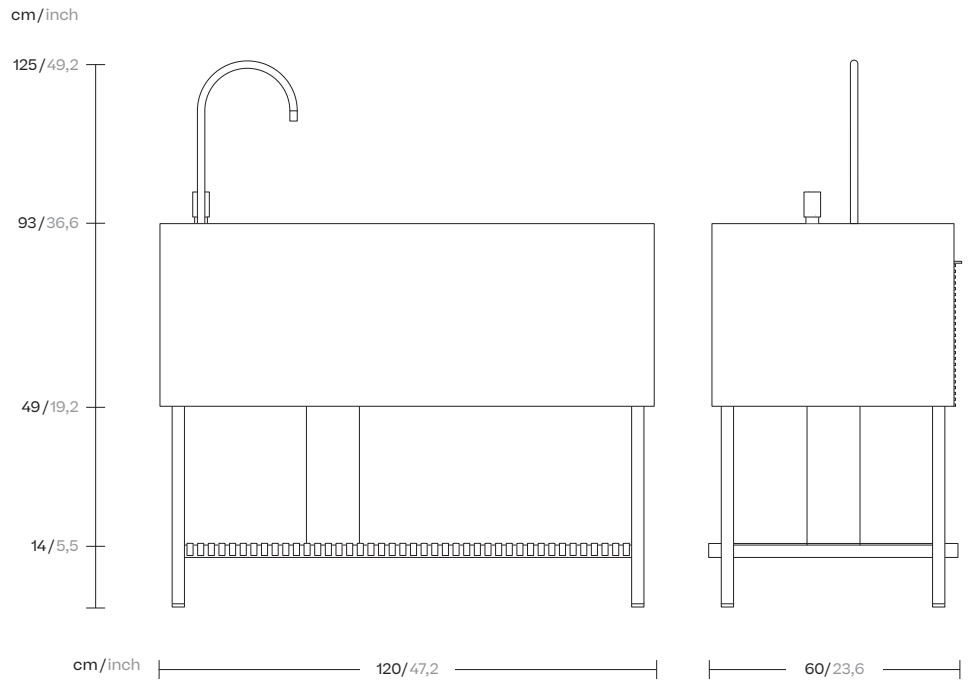
Collection  
Kitchen

Reference  
A6800AGU01  
A6800AGU0D

1/2

This modular kitchen structure offers infinite solutions. An aluminium supporting frame can be teamed with a number of stoneware modules in various combinations whilst maintaining its authentic linear design.

This design features clean, smooth surfaces, with no corners, for easy cleaning and maintenance.



CASA DESIGN | living  
GROUP | outdoor  
contract

# Sink top

Designer  
Kettal Studio

Collection  
Kitchen

Reference  
A6800AGU01  
A6800AGU0D

2/2

## Materials

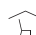
Aluminium. Antioxy, Heavy Load, Resistant En-1421, Kettalize-It, Anti-Scratch, Easy Clean Flame Retardant M1, Eco Friendly Ecoembes Recycling Process

Teak. Eco-friendly, A-grade

Ceramic

## Other characteristics

 Adjustable Legs

 Underporch

## Maintenance

Clean with non corrosive, no abrasive cleaners. No scrub pad nor pressure cleaner should be used.

## Faucet, Drainpipe and water inlet

Iconic black matt finish. Faucet model K-CE23U, Water mixer model M2L/ME.

## General Warnings

It must be sheltered from direct rain. The kitchen's location should be roofed. The kitchen can be in a place without a roof as long as it is covered when it rains.

## Colors

### Structure



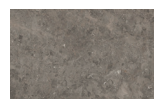
Carbon  
737

### Lower trays

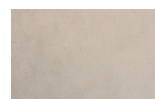


Teak  
904

### Countertop



Du Gent Grey  
CM2



Neutral Caliza  
CM3

## Detail

