

**ALFRED PANCA**  
Design Umberto Asnago

**Basamento:** in legno massello noce Canaletto, frassino colore Sabbia, frassino colore Wengé o frassino colore Greige con inserti in pelle a scelta del cliente.

**Rivestimento:** fisso, disponibile in tessuto o pelle.

**Base:** in solid wood Canaletto walnut, ashwood Sand colour ashwood Wengé colour or solid ashwood Greige colour with leather inserts at customer's choice.

**Cover:** fix, available in fabric or leather.



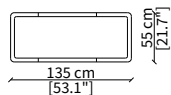
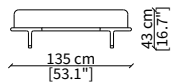
## ALFRED PANCA

Design Umberto Asnago

### PANCHE / BENCHES

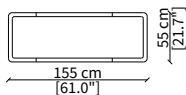
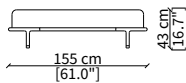
**cod. 18010**

Panca 135x35 cm / Bench 135x55 cm



**cod. 18011**

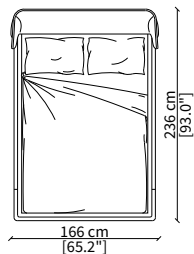
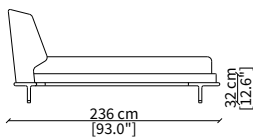
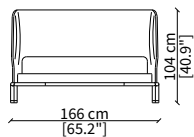
Panca 155x35 cm / Bench 155x55 cm



### LETTI / BEDS

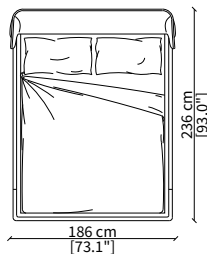
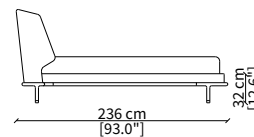
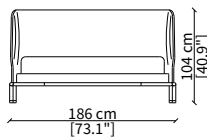
**cod. 18000**

Letto per materasso 140x200 cm / Bed mattress size 140x200 cm



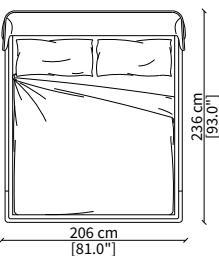
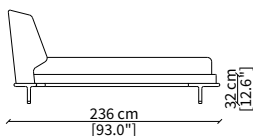
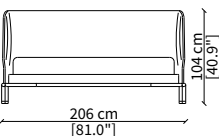
**cod. 18001**

Letto per materasso 160x200 cm / Bed mattress size 160x200 cm



**cod. 18002**

Letto per materasso 180x200 cm / Bed mattress size 180x200 cm



Dimensioni espresse in cm se non diversamente indicato.  
L'Azienda si riserva il diritto di apportare modifiche ai modelli senza preavviso.  
Tolleranza sulle misure indicate di +/- 2%.

Dimensions in centimeter if not differently indicated.  
The Company reserves the right to change the models without any advance notice.  
Tolerance on the given sizes +/- 2%.

ALFRED PANCA  
Design Umberto Asnago

## TESSUTO / FABRIC



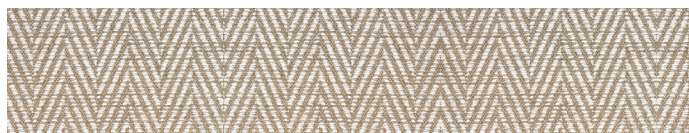
Asole



Avignone



Bellagio



Butterfly



Caprera



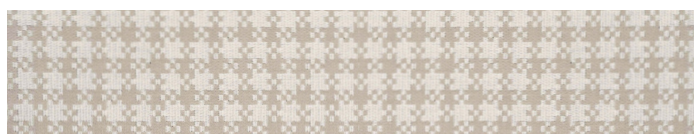
Capri



Caracalla



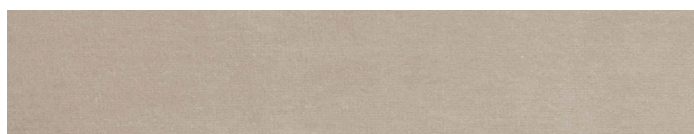
Chioggia



Candotti



Dorian



Fiocco



Il Trovatore



Ischia



Katmandu



La Boheme



Lario



Linosa



Maddalena

*La presente tabella tessile, pelli e materiali è a solo titolo indicativo e non vincolante. L'effettiva disponibilità di ogni materiale deve essere preventivamente verificata con l'ufficio commerciale Frigerio.*

*L'azienda si riserva il diritto di sospendere la disponibilità di qualsiasi materiale senza alcun obbligo di preavviso sulla presente scheda tecnica.*

*I colori visualizzati, per ovvie ragioni tecniche, sono indicativi e possono differire dall'originale. Fare riferimento al listino prezzi per uso e disponibilità di ogni singola finitura.*

*The above textile, leather and material charts are only indicative and not binding. The actual availability of any material shall be checked in advance with the Frigerio commercial office. The company reserves the right to discontinue any material without any obligation of due notice on this technical data sheet.*

*The colours visualized, for obvious technical reasons, are indicative and may differ from the original.*

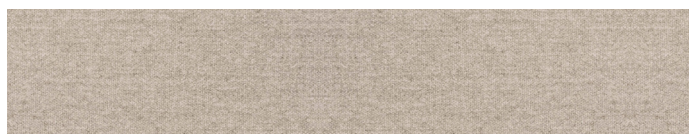
*Please refer to price list for use and availability of each finish.*

ALFRED PANCA  
Design Umberto Asnago

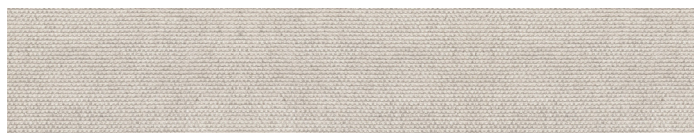
## TESSUTO / FABRIC



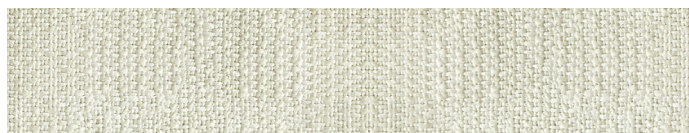
Moritz



Nebraska



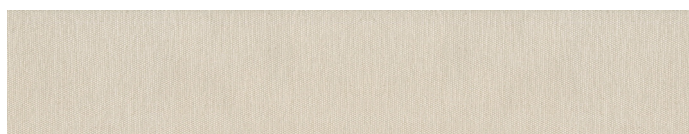
Padova



Panarea



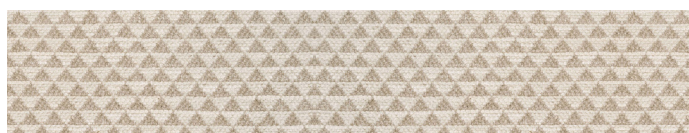
Piazza Di Spagna



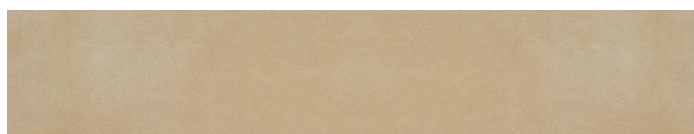
Ponza



Porto Cervo



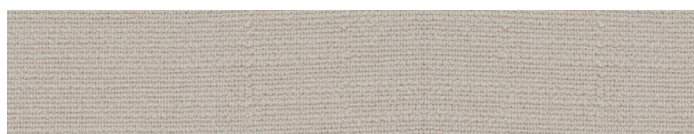
Porto Rotondo



Rem



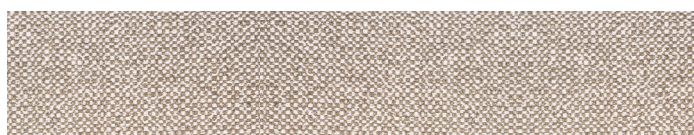
San Remo



Tellaro



Tenerife



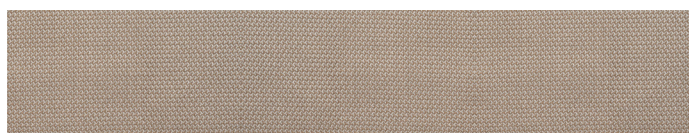
Turandot



Ventotene



Villa Borghese



Villa d'Este



Villa Flori



VF 1650

*La presente tabella tessile, pelli e materiali è a solo titolo indicativo e non vincolante. L'effettiva disponibilità di ogni materiale deve essere preventivamente verificata con l'ufficio commerciale Frigerio.*

*L'azienda si riserva il diritto di sospendere la disponibilità di qualsiasi materiale senza alcun obbligo di preavviso sulla presente scheda tecnica.*

*I colori visualizzati, per ovvie ragioni tecniche, sono indicativi e possono differire dall'originale. Fare riferimento al listino prezzi per uso e disponibilità di ogni singola finitura.*

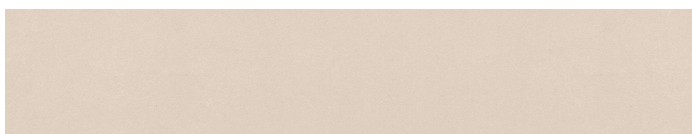
*The above textile, leather and material charts are only indicative and not binding. The actual availability of any material shall be checked in advance with the Frigerio commercial office. The company reserves the right to discontinue any material without any obligation of due notice on this technical data sheet.*

*The colours visualized, for obvious technical reasons, are indicative and may differ from the original.*

*Please refer to price list for use and availability of each finish.*

ALFRED PANCA  
Design Umberto Asnago

## TESSUTO / FABRIC



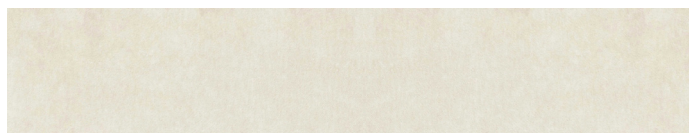
VF 1700



VF 1750



VF 1800

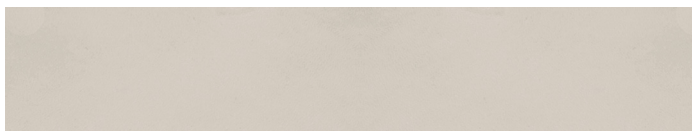


VF 2450

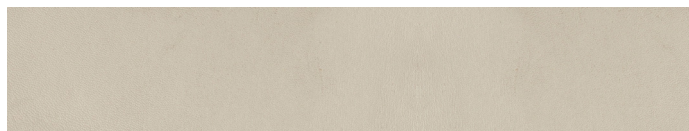


VF 2550

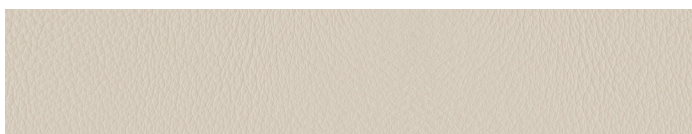
## PELLE / LEATHER



Nubuk



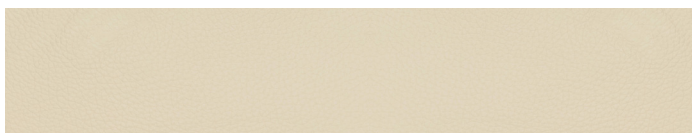
Anilina



Siena



Bolgheri



Pisa

*La presente tabella tessile, pelli e materiali è a solo titolo indicativo e non vincolante. L'effettiva disponibilità di ogni materiale deve essere preventivamente verificata con l'ufficio commerciale Frigerio.*

*L'azienda si riserva il diritto di sospendere la disponibilità di qualsiasi materiale senza alcun obbligo di preavviso sulla presente scheda tecnica.*

*I colori visualizzati, per ovvie ragioni tecniche, sono indicativi e possono differire dall'originale. Fare riferimento al listino prezzi per uso e disponibilità di ogni singola finitura.*

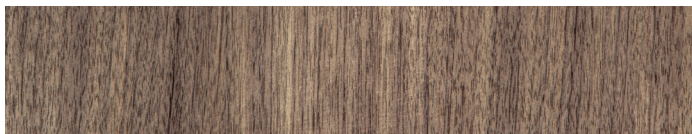
*The above textile, leather and material charts are only indicative and not binding. The actual availability of any material shall be checked in advance with the Frigerio commercial office. The company reserves the right to discontinue any material without any obligation of due notice on this technical data sheet.*

*The colours visualized, for obvious technical reasons, are indicative and may differ from the original.*

*Please refer to price list for use and availability of each finish.*

ALFRED PANCA  
Design Umberto Asnago

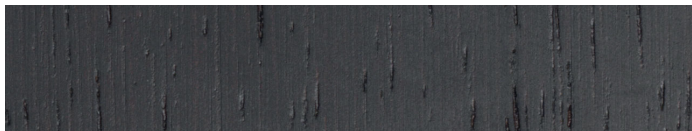
GAMBE / LEGS  
Essenze / Wood



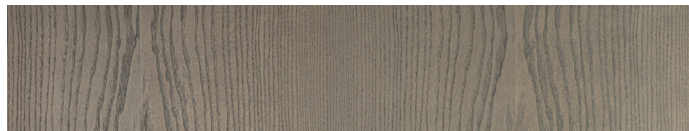
Noce Canaletto  
*Walnut Canaletto*



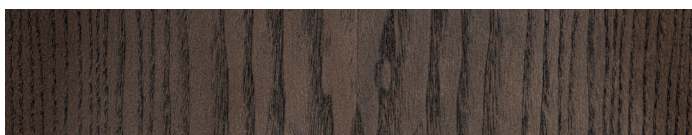
Frassino Sabbia  
*Ashwood Sand*



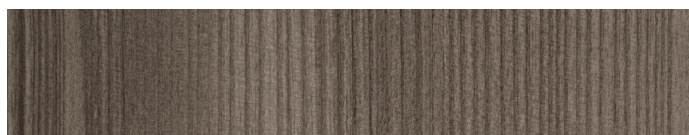
Frassino Wengè  
*Ashwood Wengè*



Frassino Greige  
*Ashwood Greige*



Frassino Liquirizia  
*Ashwood Liquorice*



Frassino Tabacco  
*Ashwood Tobacco*

*La presente tabella tessile, pelli e materiali è a solo titolo indicativo e non vincolante. L'effettiva disponibilità di ogni materiale deve essere preventivamente verificata con l'ufficio commerciale Frigerio.*

*L'azienda si riserva il diritto di sospendere la disponibilità di qualsiasi materiale senza alcun obbligo di preavviso sulla presente scheda tecnica.*

*I colori visualizzati, per ovvie ragioni tecniche, sono indicativi e possono differire dall'originale. Fare riferimento al listino prezzi per uso e disponibilità di ogni singola finitura.*

*The above textile, leather and material charts are only indicative and not binding. The actual availability of any material shall be checked in advance with the Frigerio commercial office. The company reserves the right to discontinue any material without any obligation of due notice on this technical data sheet.*

*The colours visualized, for obvious technical reasons, are indicative and may differ from the original.*

*Please refer to price list for use and availability of each finish.*