

Arc  
Club armchair,  
by Kettal Studio

# Club armchair

Designer  
Kettal Studio

Collection  
Arc

Reference  
KSA500200

1/3

The Arc collection features an enveloping backrest based on fundamental geometry: a constant radius arc. It shows restrained, elegant proportions. The light aluminium frame clearly expresses a desire to maintain armchair tradition.

The backrest features simple yet sophisticated braided strips, while the seat is padded with polyurethane foam covered in matching fabric and the fabric cushion has a removable cover.

The collection is used mostly in hotels, in lobbies and rooms, on cruise ships and also in domestic settings as light furniture in sofa and dining areas.

cm/inch

78,5/30,8

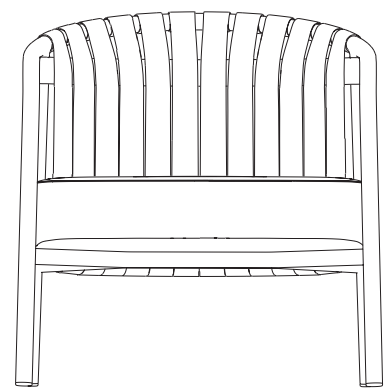
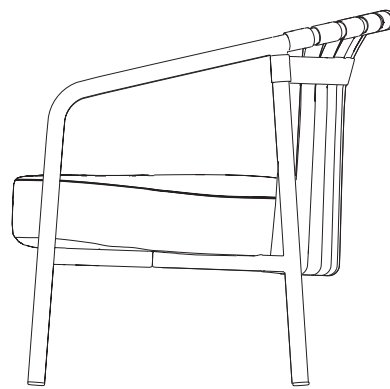
48,7/19,1

42,7/16,8

cm/inch

55,4/21,8

60,7/23,9



# Club armchair

Designer  
Kettal Studio

Collection  
Arc

Reference  
KSA500200

2/3

## Materials

**Aluminium**  
Antioxy, Heavy Load, Resistant  
En-1421, Kettalize-It, Anti-  
Scratch, Easy Clean, Flame  
Retardant M1, Eco Friendly  
Ecoembes Recycling Process

**Terrain Elements**  
100% Fire Retardant Dyed  
Acrylic, IMO FTP Code 2010  
Part 8, Abrasion resistance  
(Martindale) 60.000 cycles,  
Fluorocarbon-free water  
repellent finish Mildew, chlorine  
and seawater resistant

**Strap**  
100% Popypropilen, Abrasion  
resistance (Martindale) 50.000  
cycles, Fire retardant IMO FTP  
Code 2010 Part 8

## Maintenance

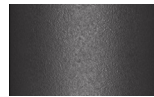
Clean with mild soap using  
sponge or cloth. Be gentle  
while cleaning, do not scrub  
aggressively the fabric. Once  
cleaned please make sure you  
remove soap excess.

In case of aggressive stains  
clean with diluted household  
bleach.

Clean stains promptly. The  
longer it remains, more difficult  
will be to remove.

Once cleaned the fabric steam  
iron the fabric. Just use steam,  
be carefull NOT placing the  
iron directly in the fabric it will  
get damage.

## Frame Colour Options



Slate Stone  
01C



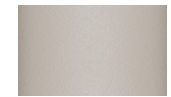
Mysty Smoke  
02C



Ash  
03C



Bone  
04C



Tuff  
05C



Wet Stone  
06C



Sand Dune  
07C



Dry Clay  
08C



Arabica  
09C



Sepia  
19C



Rose Canyon  
16C



Blossom  
20C



Ruby Dust  
18C



Sunset Glow  
17C



Terrarosa  
15C



Terracota  
14C



Amber  
13C



Ginger Root  
12C



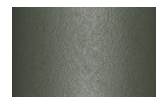
Desert Storm  
11C



African Savannah  
10C



Spring Meadow  
28C



Kombu  
29C



Forest Stream  
27C



Sea Moss  
26C



Glacier Ice  
25C



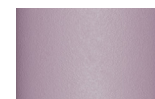
Polar Sky  
24C



Nightfall  
23C



Indigo  
22C



Wild Lupin  
21C



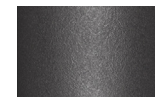
Galena  
33C



Bronze  
30C



Corten  
31C



Manganese  
32C

# Club armchair

Designer  
Kettal Studio

Collection  
Arc

Reference  
KSA500200

3/3

## Seat/Back/Head Rest Cushion

## Terrain Laminate Elements



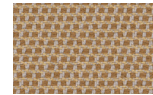
Charcoal  
01L



Cumulus  
02L



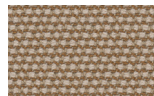
Snowcap  
03L



Goldrush  
04L



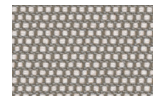
Tiger Eye  
05L



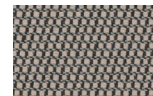
Karakum  
06L



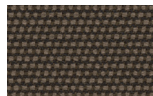
Moonstone  
07L



Porous Grey  
08L



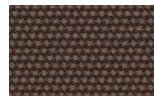
Fog  
09L



Raku  
11L



Cambium  
12L



Clove  
13L



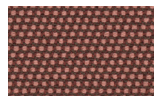
Desert Rose  
14L



Pink Salt  
15L



Pacific Dawn  
16L



Acer  
17L



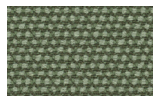
Firetail  
18L



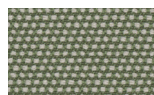
Glowing Ember  
19L



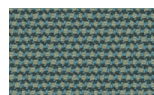
Peppercorn  
20L



Heath  
21L



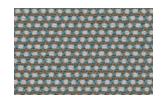
Sea Heart  
22L



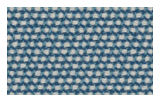
Rock Pool  
23L



Tropic  
24L



Skylark  
25L



Nautica  
26L



Blue Reef  
27L



Cosmos  
28L



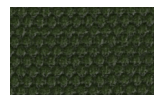
Amethyst  
29L

## Strap Colour Options

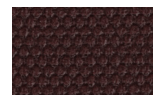
## Strap



Cotton  
CR1



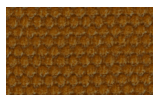
Calatea  
CR2



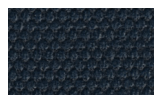
Plume Thistle  
CR3



Burnt Wood  
CR4



Sun Flower  
CR5



Sea Holy  
CR6