

Giro
Club armchair,
by Vincent Van Duysen
kettal

Club armchair

Designer
Vincent Van Duysen

Collection
Giro

Reference
KS7400300

1/3

Giro is a collection which can blend into interiors and exteriors due to its tactility and pure lines. In Giro, we have some variety of shapes, textures and materials (see the difference between the seating items and the coffee and side tables). And still all the items merge harmoniously together to create a warm, tactile and pleasant atmosphere.

cm/inch

70/27,6

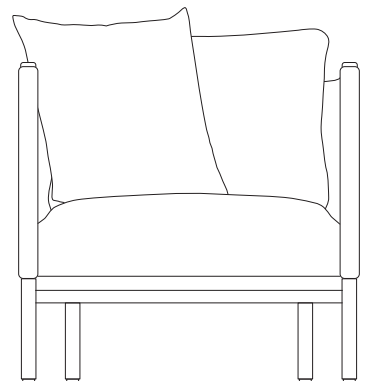
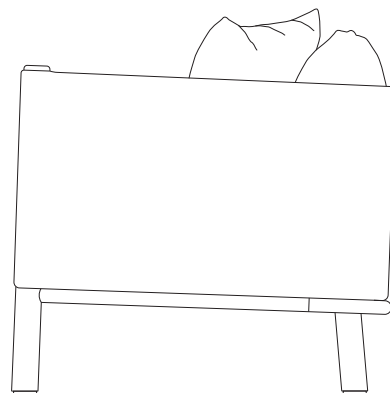
40/15,7

22/8,6

cm/inch

82/32,3

74/29,1



Club armchair

Designer
Vincent Van Duysen

Collection
Giro

Reference
KS7400300

2/3

Materials

Teak
Teak A-Grade, Eco Friendly
Oeko-Tek

Stipa Fabric
Antioxy, Resist UV, En-581-4, Easy
Clean

Terrain Elements
100% Fire Retardant Dyed
Acrylic, IMO FTP Code 2010
Part 8, Abrasion resistance
(Martindale) 60.000 cycles,
Fluorocarbon-free water
repellent finish Mildew, chlorine
and seawater resistant

Tonale Lino
100% Solution Dyed Acrylic, Fire
retardant IMO FTP Code 2010
Part 8

Tonale Boucle
60% Solution Dyed Acrylic 40%
polyester Fire retardant IMO FTP
Code 2010 Part 8

Frame Colour Options

Teak



Teak



Cinnamon
Teak

Fabric Colour Options

Soga A



New Dawn
455



Chestnut
475

Fabric Colour Options

Soga B



Woodland
485



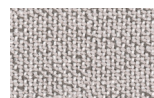
Ivy
465

Seat/Back Cushion

Tonale Lino



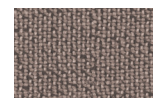
Alba
51L-51T



Mist
52L-52T



Mud Rain
53L-53T



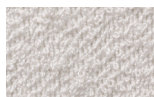
Haboob
54L-54T



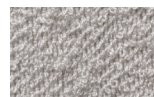
Sunstruck
55L-55T

Seat/Back Cushion

Tonale Boucle



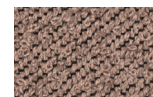
Alba
71L-71T



Mist
77L-77T



Haboob
72L-72T



Afterglow
73L-73T



Sunstruck
74L-74T



Aurora
75L-75T



Storm
76L-76T

Club armchair

Designer
Vincent Van Duysen

Collection
Giro

Reference
KS7400300

3/3

Maintenance

Clean with mild soap using sponge or cloth. Be gentle while cleaning, do not scrub aggressively the fabric. Once cleaned please make sure you remove soap excess.

In case of aggressive stains clean with diluted household bleach.

Clean stains promptly. The longer it remains, more difficult will be to remove.

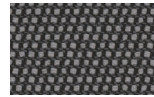
Once cleaned the fabric steam iron the fabric. Just use steam, be carefull NOT placing the iron directly in the fabric it will get damage.

Seat/Back Cushion

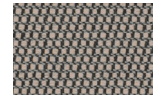
Terrain Laminate Elements



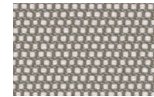
Charcoal
01L



Cumulus
02L



Fog
09L



Porous Grey
08L



Snowcap
03L



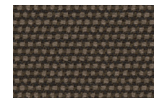
Moonstone
07L



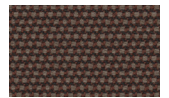
Karakum
06L



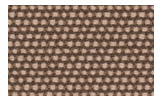
Cambium
12L



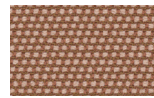
Raku
11L



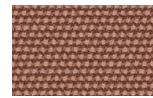
Clove
13L



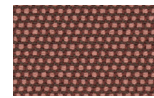
Desert Rose
14L



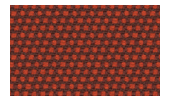
Pink Salt
15L



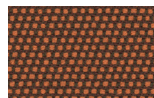
Pacific Dawn
16L



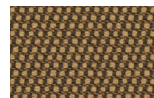
Acer
17L



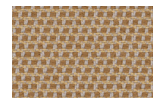
Firetail
18L



Glowing Ember
19L



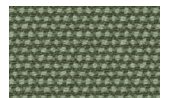
Tiger Eye
05L



Goldrush
04L



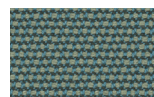
Sea Heart
22L



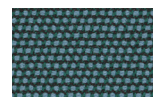
Heath
21L



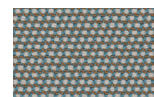
Peppercorn
20L



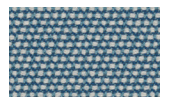
Rock Pool
23L



Tropic
24L



Skylark
25L



Nautica
26L



Blue Reef
27L



Cosmos
28L



Amethyst
29L