









CURVE



Trois formats viennent composer cette collection aux lignes singulières. Les deux lampadaires et la lampe *Curve* s'agencent autour d'un abat-jour triangulaire incurvé prolongé par la ligne du pied.





The lights of this collection are each composed of three formats with unique lines. Both the *Curve* floor lamps and Lamp arrange themselves around a triangular curved lampshade.



Finitions Finishes	 Laiton satiné SB Satin brass	 Graphite satiné SG Satin graphite	 Nickel satiné SN Satin nickel	 Cuivre satiné SC Satin copper
	 Laiton poli PB Polished brass	 Graphite poli PG Polished graphite	 Nickel poli PN Polished nickel	 Cuivre poli PC Polished copper

Abat-jour Lampshade	 Duke	 Chinette blanche White chinette
--------------------------------	--	--

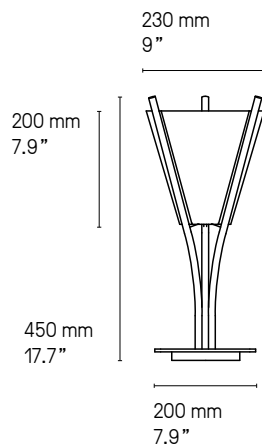
Matériaux Material	Laiton massif Solid Brass	Abat-jour tissu Textile lampshade	Câble textile noir (longueur ≈ 2 m) Black textile cable (length ≈ 79")
-------------------------------	------------------------------	--------------------------------------	---

Source Lamping	Lampadaire – Floor lamp		
	1 x E27 205 W max. Ampoule non fournie 1 x E27 205 W max. Bulb not included	Variateur à pied Foot operated dimmer	Variation* Dimming*
	1 x E26 type A 100 W. Bulb not included	Foot operated switch	
	Lampe de table – Table lamp		
1 x E27 60 W max. Ampoule non fournie 1 x E27 60 W max. Bulb not included	Interrupteur sur câble Cable switch		
1 x E26 type A 60 W. Bulb not included	Cable switch		

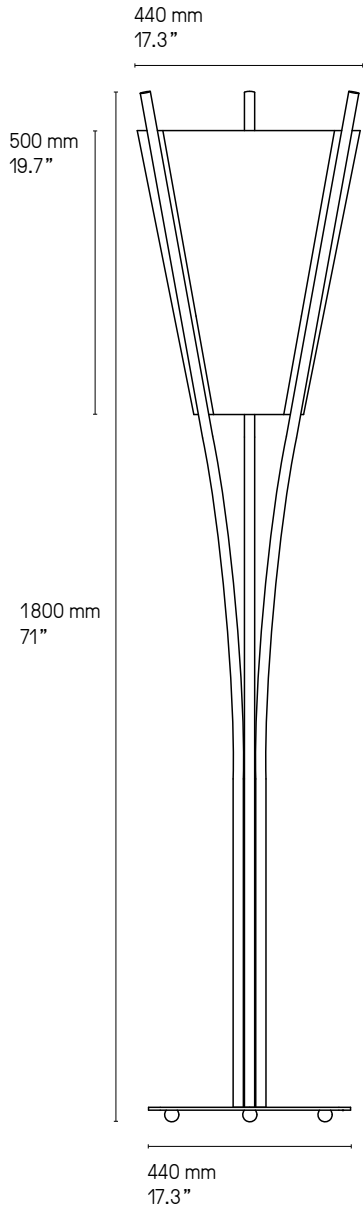
Designer Émilie Cathelineau

* Les luminaires variables nécessitent l'utilisation d'ampoules compatibles avec la variation
All dimmable light fixture require the use of compatible bulbs

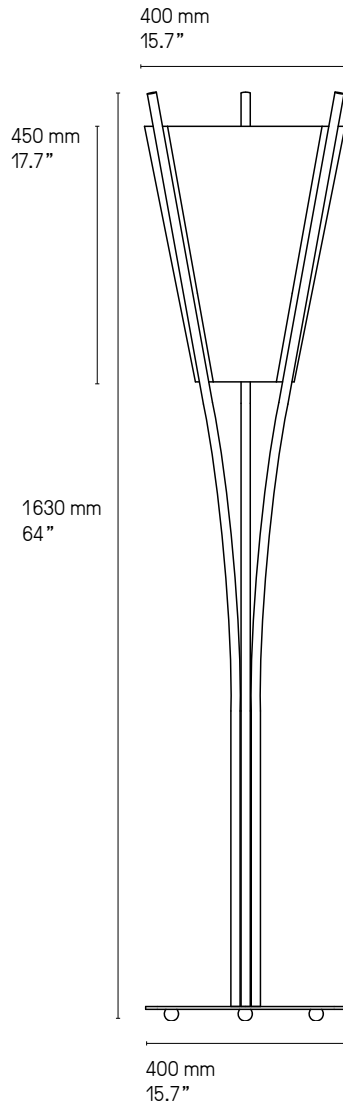
Curve lampe de table – Table lamp



Curve XL



Curve XS



Version LED et DALI sur demande.
LED and DALI version upon request.

NUANCIER - FINISH OPTIONS



LAITON - BRASS

- | | |
|-------------------------------------|---|
| ① Laiton satiné
SB Satin brass | ② Graphite satiné
SG Satin graphite |
| ③ Nickel satiné
SN Satin nickel | ④ Cuivre satiné
SC Satin copper |
| ⑤ Laiton poli
PB Polished brass | ⑥ Graphite poli
PG Polished graphite |
| ⑦ Nickel poli
PN Polished nickel | ⑧ Cuivre poli
PC Polished copper |

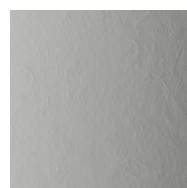
ABAT-JOURS - LAMPSHADES



Drop Paper® 100



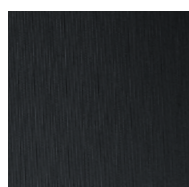
Drop Paper® 101



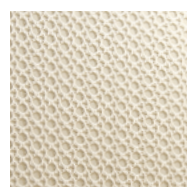
Drop Paper® 103



Chinette blanche
White chinette

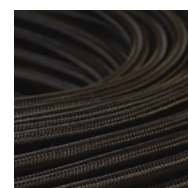


Chinette noire
Black chinette



Duke
Duke

CÂBLES - CABLES



Tissu noir
Black textile

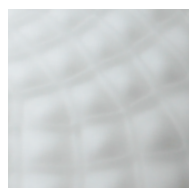


Tissu or
Gold textile

VERRERIE - GLASS



Opale
Opal



Opale et écaille
Opal and patterned



Claire et écaille
Clear and patterned

CONSEILS TECHNIQUES

Les caractéristiques techniques mentionnées dans ce document sont données à titre indicatif et sont susceptibles de subir des modifications. Ceci est lié à l'évolution rapide de la technologie LED.

Les dimensions sont approximatives et peuvent varier légèrement.

AMPOULES

Il est impératif de respecter les types et les puissances maximales préconisées sous peine de détériorer le luminaire. En cas de non-respect, la garantie ne pourra s'appliquer.

CONSEIL D'ENTRETIEN

Essuyage avec un chiffon doux, sans produits d'entretien. Nos produits étant vernis afin d'assurer la longévité du luminaire, il ne faut en aucun cas utiliser de produits détergents ou de solvants.

La société se réserve le droit de modifier, sans préavis, les caractéristiques de ses produits.

TECHNICAL ADVICE

The technical characteristics provided in this document are for information purposes only and are subject to change, due to permanent evolution of LED technology.

All dimensions are approximate and may vary slightly.

LIGHT BULBS

Use only the type of light bulb and maximum wattage shown otherwise you may damage the light fitting. Failure to use the correct light bulb and wattage will affect the warranty.

CARE INSTRUCTIONS

Wipe with a soft cloth –do not use any cleaning products. All our light fittings are lacquered to ensure the longevity of the product– under no circumstances use detergents or solvents.

The company reserves the right to modify its products at any time without notice.

CVL LUMINAIRES