

table extendable

base 1 side walls (standard)

side walls solid oak
cross section of side walls below 60,3 x 6,6 cm
space between the side walls approx. 121,5 cm

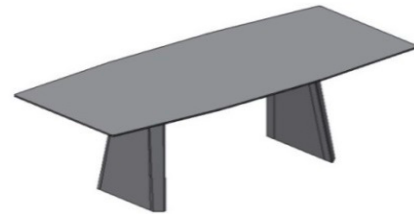


table not extendable

side walls solid oak
cross section of side walls below 60,3 x 6,6 cm
space between the side walls depending on the table size

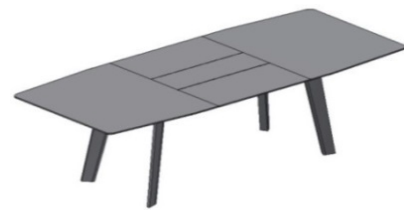


table extendable

base 2 four legs (with surcharge)

legs solid oak
cross section of legs below 9,3 x 6 cm
space between the legs approx. 147 cm



table not extendable

legs solid oak
cross section of legs below 9,3 x 6 cm
space between the side walls depending on the table size

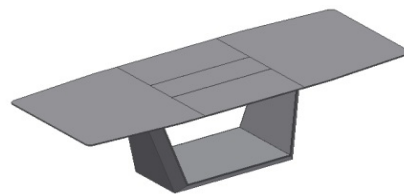


table extendable

base 3 trapezoidal base (with surcharge)

base veneered oak
base plate 95 x 60 cm

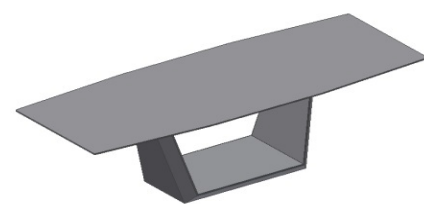


table not extendable

base veneered oak
base plate 95 x 60 cm

rectangular

trapezoidal shape

table not extended

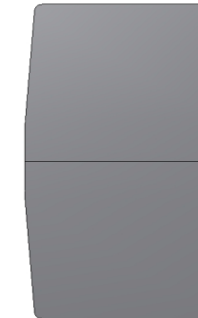
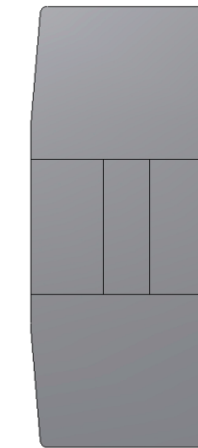
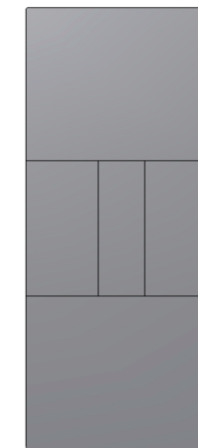


table extended



Width of the table at the headside for table size:
105 x 180 / 260 cm = approx. 94,6 cm
105 x 200 / 280 cm = approx. 93,8 cm

table not extendable



Width of the table at the headside for table size:
95 x 160 cm = approx. 86,8 cm
105 x 180 cm = approx. 95,8 cm
105 x 200 cm = approx. 94,5 cm
105 x 220 cm = approx. 93,6 cm
105 x 240 cm = approx. 92,6 cm
105 x 260 cm = approx. 91,5 cm
105 x 280 cm = approx. 90,4 cm

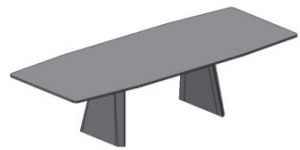
Model type	Base	Size
	solid oak natural pigmented white dark gray dark oak	W - L - H approx. in cm



extendable

1460 dining table trapezoidal shape, rectangular extendable with integrated threefold extension stone 80 cm	base 1 side walls standard	105 x 180 x 74,5 extended 105 x 260 x 74,5
--	----------------------------------	--

1460 dining table trapezoidal shape, rectangular extendable with integrated threefold extension stone 80 cm	base 1 side walls standard	105 x 200 x 74,5 extended 105 x 280 x 74,5
--	----------------------------------	--

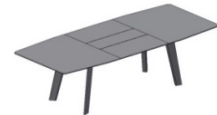


not extendable

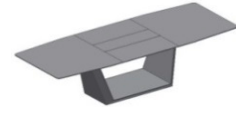
1460 dining table trapezoidal shape, rectangular not extendable	base 1 side walls standard	95 x 160 x 74 105 x 180 x 74 105 x 200 x 74 105 x 220 x 74 105 x 240 x 74 105 x 260 x 74 105 x 280 x 74
--	----------------------------------	---



base 1 - standard
side walls



base 2
four legs



base 3
trapezoidal base

Top	Top	Top	Top	Top	Top	Top
stone 2 cm edge 6 PG 2	stone 2 cm edge 6 PG 3	stone 2 cm edge 6 PG 4	stone 2 cm edge 6 PG 4a	stone 2 cm edge 6 PG 4b	stone 2 cm edge 6 PG 5	stone 2 cm edge 6 PG 6

Price supplements for special orders:

- base 1: solid oak stained or open porous lacquered to RAL / NCS as per request
- base 1: solid American walnut
- base 2: conical legs, solid oak:
natural or pigmented white, dark gray or dark oak
- base 2: solid oak stained or open porous lacquered to RAL / NCS as per request
- base 2: solid American walnut
- base 3: veneered oak dark gray or dark oak
- base 3: veneered oak stained or open porous lacquered to RAL / NCS as per request
- base 3: veneered American walnut

1460 FONTANA

SOLID WOOD

DESIGN GEORG APPELTSHAUSER / GINO CAROLLO 2014

FONTANA 1460

SOLID WOOD

Model type	Base	Size
	same as table top	W - L - H approx. in cm

Top	Top
solid wood 2,5 cm edge 6 oak natural waxed pigmented white waxed dark gray stained, lacquered dark oak stained, lacquered	solid wood 2,5 cm edge 6 American walnut waxed



not extendable

1460 dining table trapezoidal shape, rectangular not extendable solid wood table top glued lengthwise	base 1	95 x 160 x 74
	side walls	105 x 180 x 74
	standard	
		105 x 200 x 74
		105 x 220 x 74
		105 x 240 x 74
		105 x 260 x 74
		105 x 280 x 74

base 1 - standard
side wallsbase 2
four legsbase 3
trapezoidal base**Price supplements for special orders:**

base 1: stained or open porous lacquered to RAL / NCS as per request

base 2: conical legs, solid oak:

natural or pigmented white, dark gray or dark oak stained

base 2: solid oak stained or open porous lacquered to RAL / NCS as per request

base 2: solid American walnut

base 3: veneered oak dark gray or dark oak stained

base 3: veneered oak stained or open porous lacquered to RAL / NCS as per request

base 3: veneered American walnut