



**2-PACK CREATOR LIGHT KIT**  
46" EXTENDABLE TRIPOD + WIRED REMOTE

**IN THE BOX**



Light Panel with Cable (2 pc)      46 Inch Extendable Tripod (2 pc)

**INSTALLATION (Tripod Setup)**

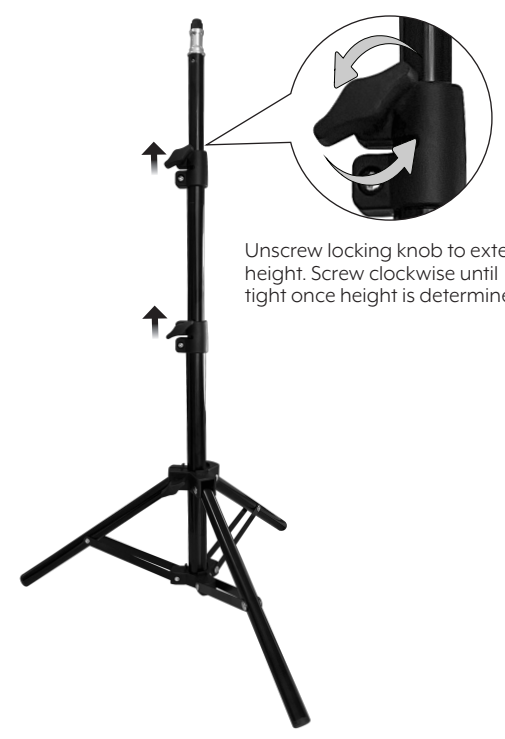


**STEP 1:** Unscrew the locking knob. Turn counter clockwise direction until loose.



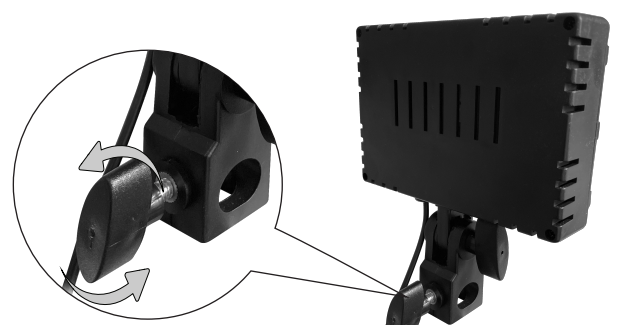
**STEP 2:** Pull legs outward until legs are set far apart for a firm stance. Tighten the locking knob to set leg stance. Set leg stance wide apart for stability.

**INSTALLATION (Tripod Setup)**

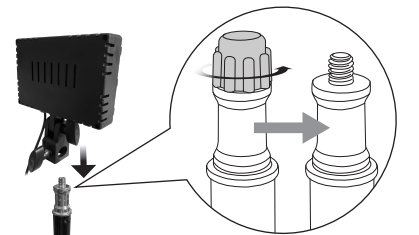


**STEP 3:** Pull out extensions(2 Total) from center column as needed for desired height. Unscrew locking knobs to pull out each section. Tighten after height is determined.

**INSTALLATION (Light)**



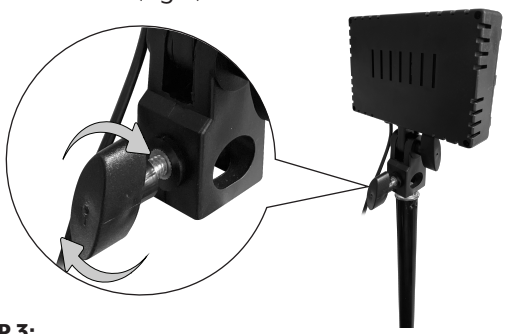
**STEP 1:** Unscrew the locking knob. Turn counter clockwise direction until loose. Make sure inner screw is not blocking path of Tripod insert tip.



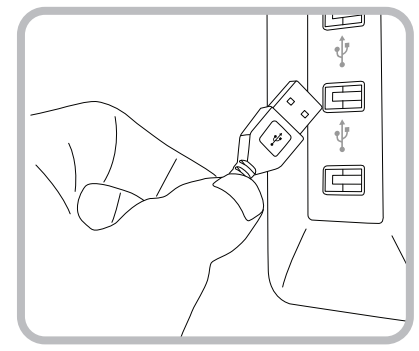
**STEP 2:** Remove cap screw (turn counter clockwise) on Tripod before inserting Light. Insert Light into the insert tip of the Tripod.

**NOTE:** REMOVE TRIPOD SCREW CAP FROM INSERT TIP BEFORE ATTACHING THE LIGHT

**INSTALLATION (Light)**



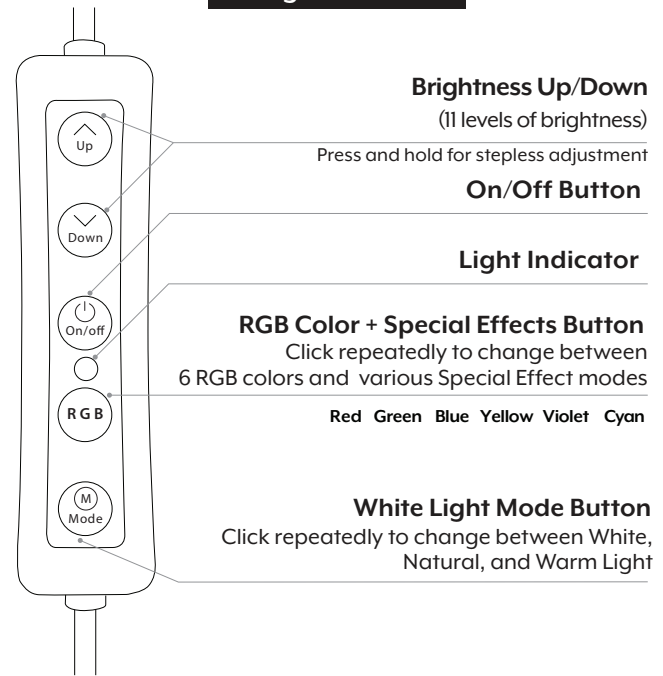
**STEP 3:** Tighten locking knob for secure attachment. Turn clockwise.



**STEP 4:** Connect USB cable on Light to a USB port (Computer/Laptop, Wall Charger, Portable Power Bank, etc.) to begin use.

**HOW TO USE (In-line Remote Control)**

**Using the Remote**



**Brightness Up/Down**  
(11 levels of brightness)  
Press and hold for stepless adjustment

**On/Off Button**

**Light Indicator**

**RGB Color + Special Effects Button**  
Click repeatedly to change between 6 RGB colors and various Special Effect modes  
Red Green Blue Yellow Violet Cyan

**White Light Mode Button**  
Click repeatedly to change between White, Natural, and Warm Light

**NOTE:** Pressing the Up/Down Button while a Special Effect is selected will cause the effect to change speed.

**FEATURES:**

- Choose from six (6) different RGB colors, three (3) White Light modes, various RGB Special Effect lighting modes, and adjustable brightness.
- Easy to use in-line remote to power on/off and switch to the lighting mode/effect mode you prefer.
- Collapsible tripod (15.5" closed position) stores conveniently, adjustable height extends from 21-46 in(floor to top of light).
- Designed for versatile use. Can be used for Content Creation, Video Calls, Photography/Video, plus more .
- USB powered: No battery required, works with most devices that have a USB port: Computer, Laptop, USB Wall Charger, Power Bank, etc.
- 2 Lights/2 Tripods for creative control.

**SPECIFICATION:**

LED Beads: 48(white)+48(yellow)+48(RGB)  
Color Temperature: 3000-7000k  
CRI: ≥90  
Output power:7W  
Input: 5V 2A  
Lumens: 480LM  
Product size(Light): 5.5\*3.7\*\*1.2in(Length\*Height\*Depth)  
Tripod Extension: 21-46in(from floor to top of light)

**LIMITED One (1) Year Limited Warranty**  
**S. Bower Inc.™ One (1) Year Limited Warranty: This warranty gives you specific legal rights and you may have other rights which vary from state to state.**

The S. Bower Inc.™ Limited Warranty is a voluntary manufacturer's warranty provided to the consumer. This warranty provides rights separate to rights provided by consumer law, including but not limited to those relating to non-conforming goods. S. Bower Inc.™ One-Year Limited Warranty benefits are in addition to, and not instead of, rights provided by consumer law and it does not exclude, limit or suspend a buyer's rights arising from consumer law. Consumers have the right to choose whether to claim service under the S. Bower Inc.™ One-Year Limited Warranty or under their consumer law rights. The S. Bower Inc.™ One-Year Limited Warranty terms and conditions shall not apply to consumer law claims, contact your local consumer organization. Please note: All claims made under the S. Bower Inc.™ One-Year Limited Warranty will be governed by the terms set out in this warranty document. S. Bower Inc.™ warrants to the product owner that this product will be free against defects in materials and workmanship for a period of ONE (1) YEAR from the date of original retail purchase when used in accordance with S. Bower Inc.™'s user manual. Under this warranty, you will be able to send your claims and defective product to S. Bower Inc.™, via freight prepaid, along with proof of purchase, and will be repaired or replaced, based on S. Bower Inc.™ sole discretion. Repair and/or replacement may be made with new or refurbished product components at S. Bower Inc.™ sole discretion. This limited warranty does not cover failures due to abuse, accidental damage or when repairs have been made or attempted by anyone other than S. Bower Inc.™ personnel. A defective product meeting the warranty conditions set forth herein will be replaced or repaired at no charge in either of two ways: The first, which will result in exchanges only, is to return the product to the retailer from whom it was purchased (provided that the store is a participating retailer). Returns should be made within the time period of the retailer's policy for exchanges. Proof of purchase may be required. Please check with the retailer for its specific return policy regarding time limits for returns or exchanges. The second option is to send the product (prepaid freight) to S. Bower Inc.™ corporate offices located at S. Bower Inc., 38-09 43rd Avenue 1st Floor Long Island City, NY 11101 for repair or replacement at S. Bower Inc.™'s option. Proof of purchase is required. Include name, return address, and issues that you are experiencing with S. Bower Inc.™ products. All other guarantees, express or implied, are hereby disclaimed.

**This warranty does not apply to products sold in countries sold out of the United States.**