

COMPACT

Reverse Osmosis System



Fine Sediment Removal



Carbon



Reverse Osmosis

Assembly Instruction Guide

STEP 1

Unpack the components of your new SR Aquaristik Compact Reverse Osmosis System



STEP 2

Remove the red temporary stoppers installed on your system that protects cartridges from contamination.



STEP 2.1

Remove the blue line lock by gently pulling away from the filter.



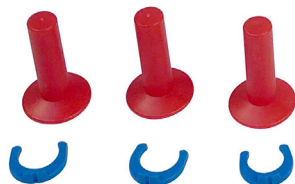
STEP 2.2

Push down the little white ring that sits above the lock.

Assembly Instruction Guide

STEP 2.3

Pull out the temporary stopper.



STEP 3

Connect the white hose tubing included in the package.



STEP 3.1

Start by pushing the included white hose tubing into the quick connect,



Make sure to push in as far as possible. Also make sure that the hoses always cut as straight as possible to ensure that the line goes in as far as possible.

Assembly Instruction Guide

STEP 3.2

Test the connection by pulling the hose gently and place the blue hose lock back.



Your unit comes with a standard three-quarter inch hose connection, disconnection will fit standard garden hose or most laundry style sinks. This will supply your filter with tap water.



STEP 4

Connect the white RO tubing or hose to your filtered line using the same process in STEP 3.



Filtered water can be dripped directly into a bucket or clean container. This is your filtered or purified water.

STEP 5

Connect your line using the same process in STEP 3 to your wastewater.



This is the water that will be discarded.

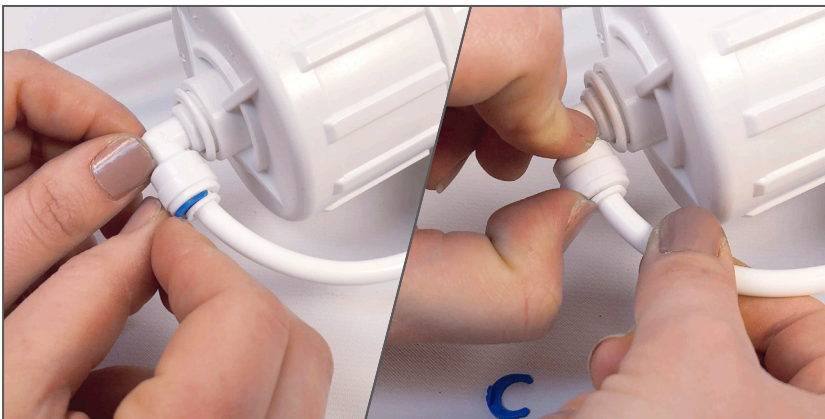


Make sure that you place all of the blue locks back, this will help ensure a secured connection and reduce the chance of a leak.



STEP 6

Remove the hose from the reverse osmosis membrane housing using the same process in STEP 1.



Assembly Instruction Guide

STEP 7

Remove the reverse osmosis membrane cap



Remember when re-tightening after installation not to tighten too much just a snug fit will be enough to prevent any issues or leakage.



Over tightening could damage the threads and make it difficult to remove when replacing membrane.



STEP 8

Place the reverse osmosis membrane into position, push down snugly into position.



STEP 9

Reinstall the reverse osmosis membrane cap, securely tightening in place but not over tightening.



STEP 10

Reattach the hose tubing using the same process in STEP 3, make sure to push firmly into place and place the blue line lock back.



STEP 11

Turn on the water and check for any leakage. We recommend running the filter for 2 to 3 hours before using the water for your aquarium.



Remember only use cold water!

