



# ABSTRAX™ TECH

www.abstraxtech.com | info@abstraxlabs.com | 15550 Rockfield Blvd, Suite B120 | Irvine, CA 92618



## Certificate of Analysis

**Name:** Super Lemon Haze  
**Matrix:** Terpene Blend  
**Lot #:** SAMPLE  
**Product #:** ABXTB0147

**CAS #:**  
**Manufacture Date:** SAMPLE  
**Expiration Date:** SAMPLE  
**Overall Pass**

Test	Specification	Result
Appearance	Colorless to yellow clear liquid	Pass

Volumetric glassware complies with Class A tolerance requirements of ASTM E 288 and NIST Circular 434; it is calibrated before first use and recalibrated regularly in accordance with ASTM E 542 and NIST Procedure NBSIR 74-461. Balances are calibrated regularly with weights certified traceable to the NIST national mass standard. Thermometers and temperature probes are calibrated before first use and recalibrated regularly with a thermometer traceable to NIST standards. All products are prepared according to master documents that assure manufacture according to validated methods. Batch records document raw material traceability and production and testing history for each lot manufactured.

Specific Gravity @ 25 °C	Specification	Result
Pass	0.89 - 0.93	0.91

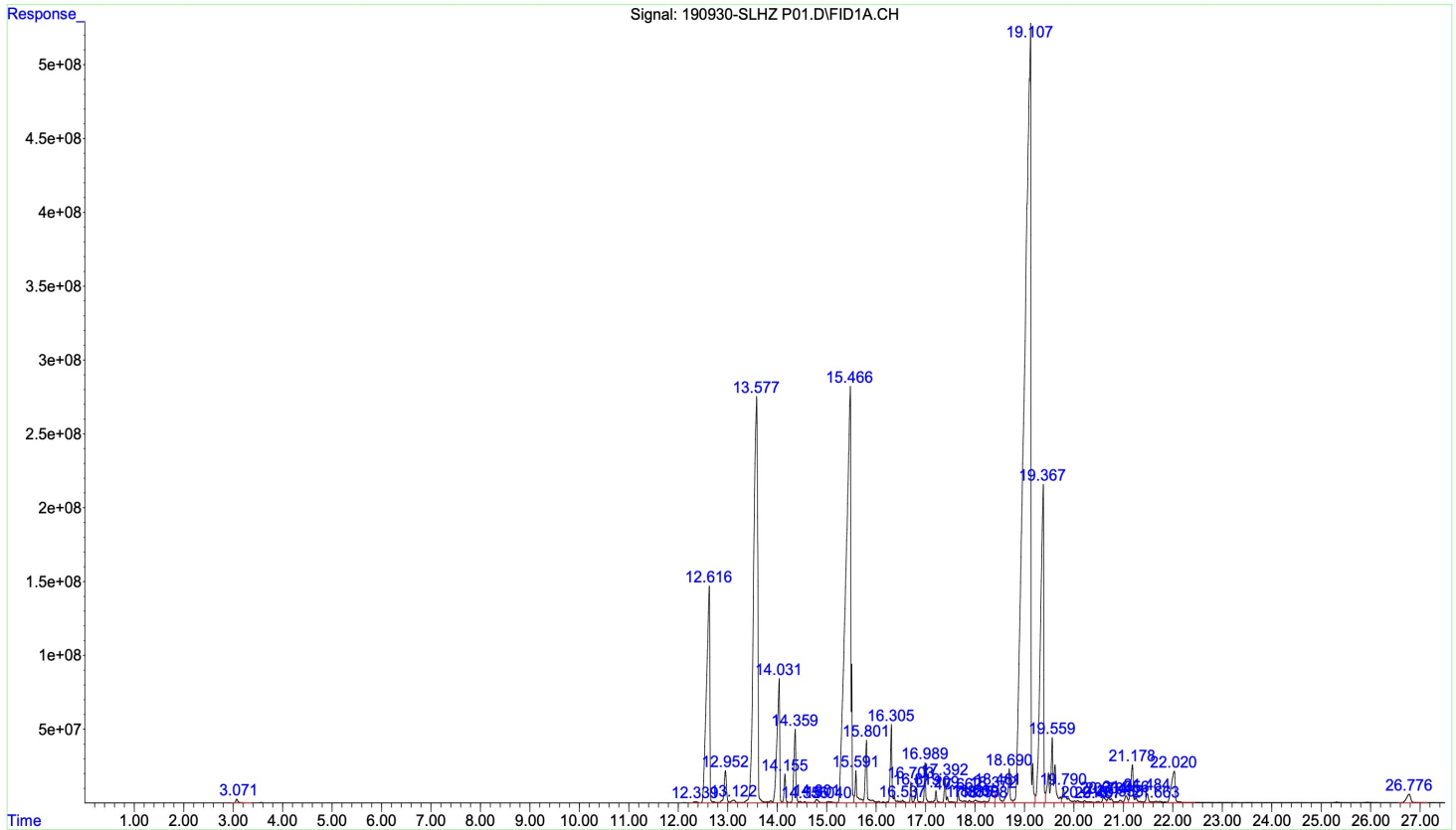
Gas Chromatograph	Residual Solvent Analysis	Result
>90% purity	Pass	Pass

Acetone	Pass	Hexane	Pass
Acetonitrile	Pass	Isopropyl Alcohol	Pass
Benzene	Pass	Methanol	Pass
Butane	Pass	Methylene Chloride	Pass
Ethanol	Pass	Pentane	Pass
Ethyl Acetate	Pass	Propane	Pass
Ethyl Ether	Pass	Toluene	Pass
Heptane	Pass	M-xylene	Pass

O-xylene  
P-xylene

Pass  
Pass

File : C:\msdchem\1\data\190930-SLHZ P01.D  
Operator : MARCOS OJEDA  
Acquired : 01 Oct 2019 23:01 using AcqMethod BULK SOLVENT TESTING.M  
Instrument : GC-FID  
Sample Name: SLHZ P01  
Misc Info :  
Vial Number: 51



DATA REVIEWED AND APPROVED  
BY:

**SY**

SAMPLE                      SAMPLE  
Formulation Chemist