



# ABSTRAX<sup>TM</sup> TECH

www.abstraxtech.com | info@abstraxlabs.com | 2661 Dow Avenue | Tustin, CA 92780

## Certificate of Analysis

**PHOTO**  
**N/A**

**Name:** Natural Wedding Cake

**Matrix:** Terpene Blend

**Lot #:** ABX0002477

**Product #:** ABXTB0160

**Manufacture Date:** 4/20/2021

**Expiration Date:** 4/20/2022

**Overall Result:** Pass

Test	Specification	Result
Appearance	Colorless to yellow clear liquid	Pass

Volumetric glassware complies with Class A tolerance requirements of ASTM E 288 and NIST Circular 434; it is calibrated before first use and recalibrated regularly in accordance with ASTM E 542 and NIST Procedure NBSIR 74-461. Balances are calibrated regularly with weights certified traceable to the NIST national mass standard. Thermometers and temperature probes are calibrated before first use and recalibrated regularly with a thermometer traceable to NIST standards. All products are prepared according to master documents that assure manufacture according to validated methods. Batch records document raw material traceability and production and testing history for each lot manufactured.

Specific Gravity @ 25 °C	Density Range	Result
0.87445	0.86-0.90	Pass

Gas Chromatograph	Residual Solvent Analysis	Water Activity ( $A_w$ ) < 0.65
>90% purity	Pass	0.39

1,2-Dichloroethane

Pass

Ethyl Ether

Pass

Acetone

Pass

Ethylene Oxide

Pass

Acetonitrile

Pass

Heptane

Pass

Benzene

Pass

Hexane

Pass

Butane

Pass

Isopropyl Alcohol

Pass

Chloroform

Pass

Methanol

Pass

Ethanol

Pass

Methylene Chloride

Pass

Ethyl Acetate

Pass

Pentane

Pass

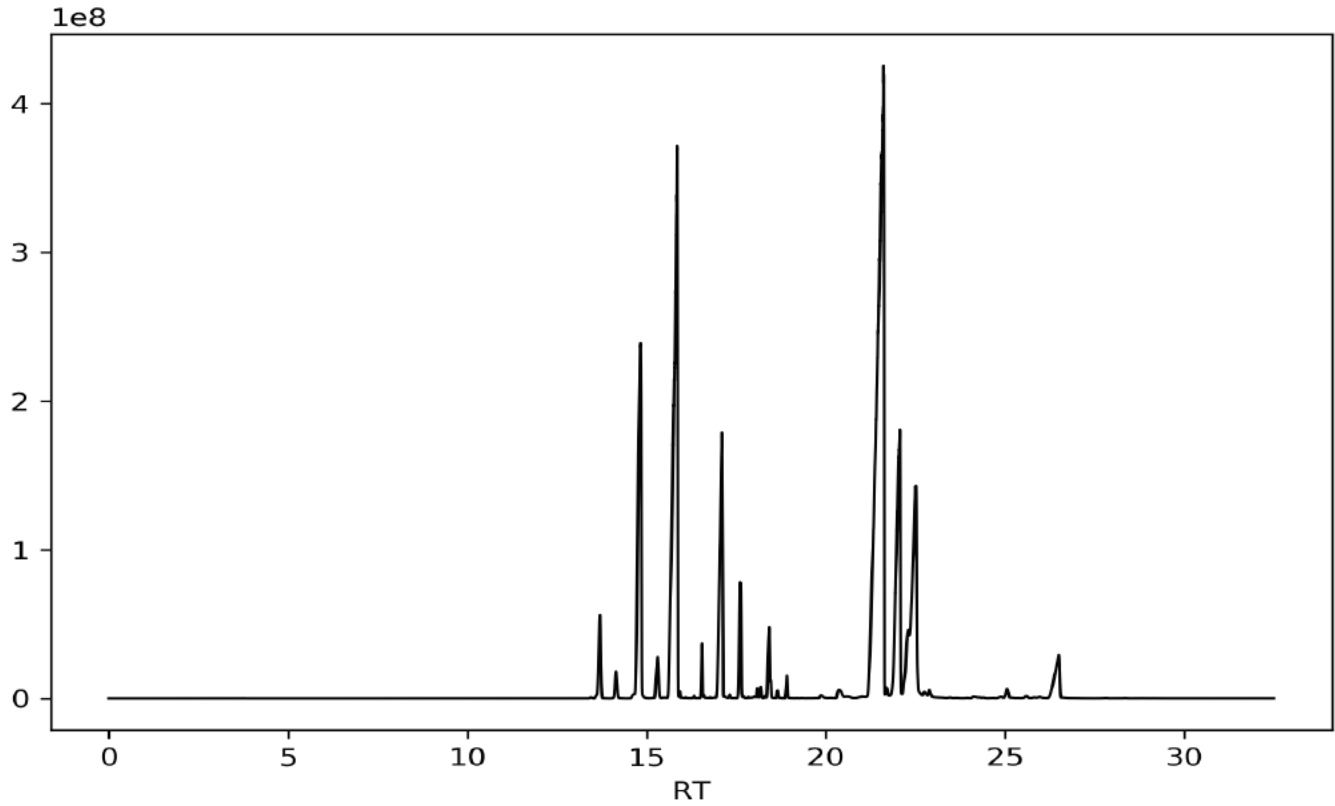
www.abstraxtech.com | info@abstraxlabs.com | 2661 Dow Avenue | Tustin, CA 92780

Propane  
Trichloroethylene  
Toluene

Pass  
Pass  
Pass

M-xylene  
O-xylene  
P-xylene

Pass  
Pass  
Pass



DATA REVIEWED AND APPROVED

BY:

Marcos Ojeda  
QC Chemist

4/21/2021

This Certificate of Analysis is accurate to the best of our knowledge. However, the customer is responsible for performing its own assessment to ensure that the material is suitable for its intended applications, including compliance with all pertinent legal requirements. The expected shelf life is calculated from the original manufacture date and is based on unopened containers stored under proper conditions. Once containers have been opened, maintaining minimal headspace and storing under appropriate conditions will aid in preserving the product's integrity.