



# ABSTRAX<sup>TM</sup>

TECH

www.abstraxtech.com | info@abstraxtech.com | 15550 Rockfield Blvd, Suite B120 | Irvine, CA 92618

## TERPENE SPEC SHEET

### Mojito

#### ANALYSIS

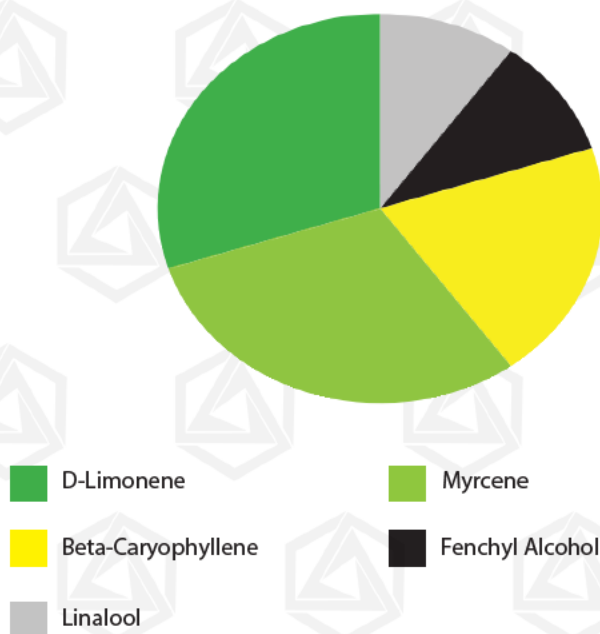
##### DOMINANT TERPENES (>50%)

D-Limonene	20-50%
Myrcene	20-50%
Beta-Caryophyllene	10-20%
Fenchyl Alcohol	5-10%
Linalool	5-10%

##### MINOR TERPENES (<50%)

Alpha-Bisabolol	Alpha-Phellandrene
Alpha-Pinene	Alpha-Terpinene
Alpha-Terpineol	Beta-Pinene
Camphene	D-Camphor
Delta-3-Carene	Farnesene
Geraniol	Isoborneol
L-Menthol	Nerol
Terpinolene	Valencene

##### TOP INGREDIENTS



##### NATURAL VS. ARTIFICIAL

98%



NATURAL

2%

ARTIFICIAL

>98% Natural terpenes

<2% Artificial flavorings

"This information is proprietary commercial information and should be treated as a trade secret and kept confidential at all times."



# ABSTRAX™ TECH

www.abstraxtech.com | info@abstraxtech.com | 15550 Rockfield Blvd, Suite B120 | Irvine, CA 92618

## Product Data Sheet

### Mojito

#### Description:

With a characteristic mint-lime tang, Mojito is a strain that waits a moment before bringing out the big guns. A cross from Limegerian (Nigerian Landrace) and Orange Blossom Trail (Orange Bud + OG Kush), there's a tangibly musky aftershock - courtesy of grandparent OG Kush. Now, that earthen impact is cushioned through the mixing of various citric players, making for a playful, almost fizzy exhale.



#### Dominant Terpenes:

D-Limonene (20-50%), Myrcene (20-50%), Beta Caryophyllene (10-20%), Fenchyl Alcohol (5-10%), Linalool (5-10%), and a proprietary blend of Alpha-Caryophyllene, Sabinene, Alpha-Cedrene and minor terpenoids/flavor isolates with <2% Artificial flavoring

**Mood Orientation:** Uplifting, Calm

#### Specification (as manufactured):

Appearance	Colorless to yellow clear liquid
Aroma	Lime, Cucumber, Earthy, Pungent
Flavor	Lime, Cucumber, Earthy, Pungent
Density	0.83-0.87

www.abstraxtech.com | info@abstraxlabs.com | 15550 Rockfield Blvd, Suite B120 | Irvine, CA 92618

**Storage:**

Store flavor in airtight, sealed containers at ambient temperature (<22°C/72°F) and <60% relative humidity. Avoid exposure to light, air and high heat. Once containers have been opened, maintaining minimal headspace and storing under appropriate conditions will aid in preserving the product’s integrity.

**Shelf Life:**

Typical shelf life is 1 year from date of manufacture when stored in original container and under recommended storage conditions.

**Food Ingredient Declaration For Customers<sup>1</sup>**

Synthetic      Flavor (FDA)

This flavor contains ingredient(s) which are approved for use in a regulation of the Food and Drug Administration (FDA) and/or are listed as Generally Recognized as Safe (GRAS) on a reliable, published industry association list pursuant to 21CFR101.22.

**Nutritional Contribution:**

The nutritional content of flavor additives does not contribute to the nutritional value of foods, due to the extremely low use level. Therefore, pursuant to 21CFR 101.9 (i) (4), flavors are exempt from nutritional labeling. Nutritional data is available upon request.

**Regulatory Status:**

Flavor	
USA Regulated Allergens <sup>2</sup>	
International Regulated Allergens <sup>3</sup>	
Country of Maufacture	USA
Other	Contains Myrcene

1.      USA labeling recommendations are pursuant to 21CFR 101.22 (k) (2). Label declaration requirements vary significantly in different countries. These label declarations should not be used or adopted without confirming that the declaration is appropriate and legal for the subject country and intended application.
2.      Crustacean, Egg, Fish, Milk, Peanut, Shellfish, Soybean, Tree Nut, Wheat are allergens recognized by the USA Food and Drug Administration Food Allergen Labeling and Consumer Protection Act of 2004 (FALCPA). FALCPA does not regulate sulfites as allergens. However, sulfites are considered a sensitizing chemical in the USA and will; be identified when present at >10 ppm.
3.      Apple, Beef, Buckwheat, Celery, Crustacean, Egg, Fish, Gelatine, Gluten, Kiwifruit, Milk, Mushroom, Mustard, Orange, Peanut, Pork, Poultry, Sesame Seed, Shellfish, Soybean, Sulfite, Tartrazine, Tomato, Tree Nut, Wheat, Yam
4.      WARNING: This product can expose you to Myrcene, which is known to the State of California to cause cancer. For more information go to [www.P65Warnings.ca.gov](http://www.P65Warnings.ca.gov).