

Gelatti

LOT #: GC-B01-E02

ANALYZED ON: 2/3/2020

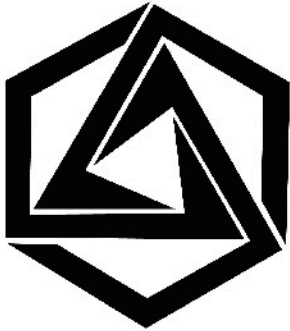


ABSTRA X

CANNABIS PRODUCT DATASHEET

License # CDPH-10002333

GELATTI



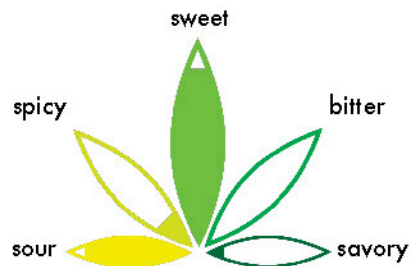
ABSTRA X METABOLITE FINGERPRINT

Product Type: Flower

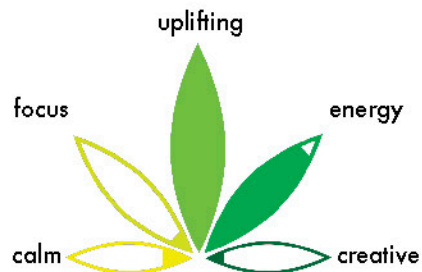
Mood Orientation: Sativa-dominant Hybrid

Total Aroma Concentration: 2.2%

FLAVOR

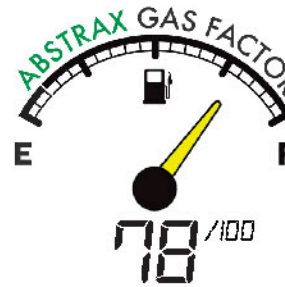


EFFECTS



GAS FACTOR

This measures how powerfully a flower permeates the surrounding air with skunky and gassy fumes.

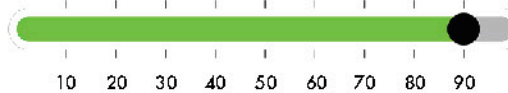


High gassy aroma

EXOTIC FACTOR

This spectrum gauges the pungency of exotic flowers – sweet, fruity, or dessert flavors.

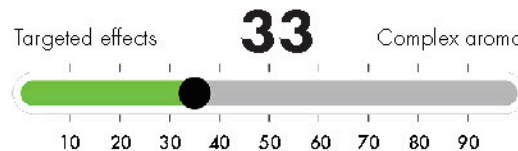
88



Intense exotic aromas

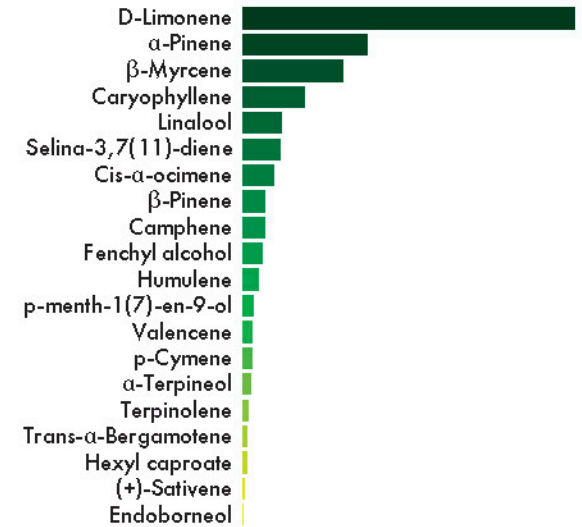
STRAIN BALANCE

High concentrations of the top terpenes have more targeted effects. More dispersal increases flavor complexity.

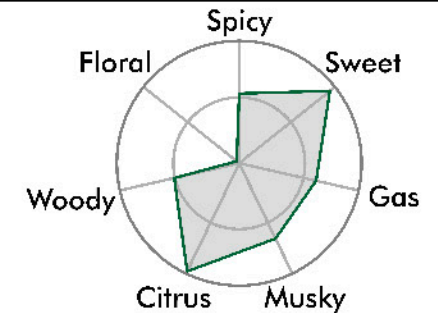


Targeted effects

MAJOR TERPENES



AROMA MAP



AROMA COMPOUNDS



Total aroma compounds detected.



ABSTRAX

CANNABIS PRODUCT DATASHEET

License # CDPH-10002333

Gelatti Flower



ABSTRAX

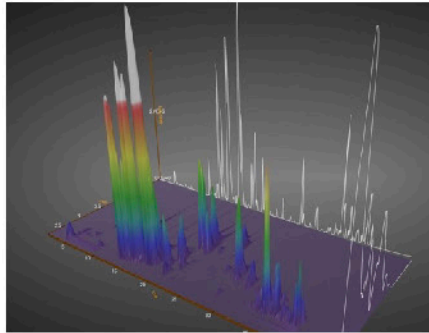
METABOLITE FINGERPRINT

DISCOVERY



Pioneering Green Frontier
New Compound Discovery

RESEARCH



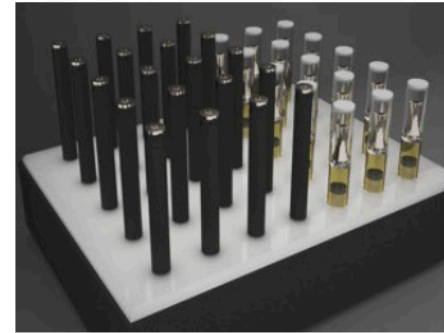
Advanced Aroma Mapping
3D Metabolite Fingerprint™

EXTRACTION



Extraction Optimization
Product Development

FORMULATION



Product Formulations
Finished Goods

Learn more about our cannabis research and development:

