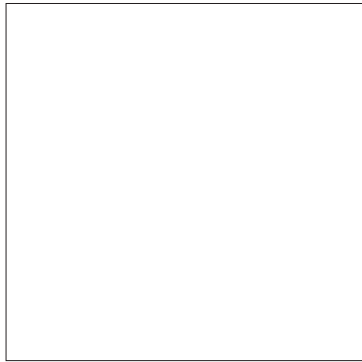




ABSTRAX™ TECH

www.abstraxtech.com | info@abstraxlabs.com | 15550 Rockfield Blvd, Suite B120 | Irvine, CA 92618

Certificate of Analysis



Name:
Matrix:
Lot #:
Product #:

Manufacture Date:
Expiration Date:
Overall Result:

Test	Specification	Result
Appearance		

Volumetric glassware complies with Class A tolerance requirements of ASTM E 288 and NIST Circular 434; it is calibrated before first use and recalibrated regularly in accordance with ASTM E 542 and NIST Procedure NBSIR 74-461. Balances are calibrated regularly with weights certified traceable to the NIST national mass standard. Thermometers and temperature probes are calibrated before first use and recalibrated regularly with a thermometer traceable to NIST standards. All products are prepared according to master documents that assure manufacture according to validated methods. Batch records document raw material traceability and production and testing history for each lot manufactured.

Specific Gravity @ 25 °C	Specification	Result

Gas Chromatograph	Residual Solvent Analysis	Water Activity (A_w) < 0.65

1,2-Dichloroethane

Acetone

Acetonitrile

Benzene

Butane

Chloroform

Ethanol

Ethyl Acetate

Ethyl Ether

Ethylene Oxide

Heptane

Hexane

Isopropyl Alcohol

Methanol

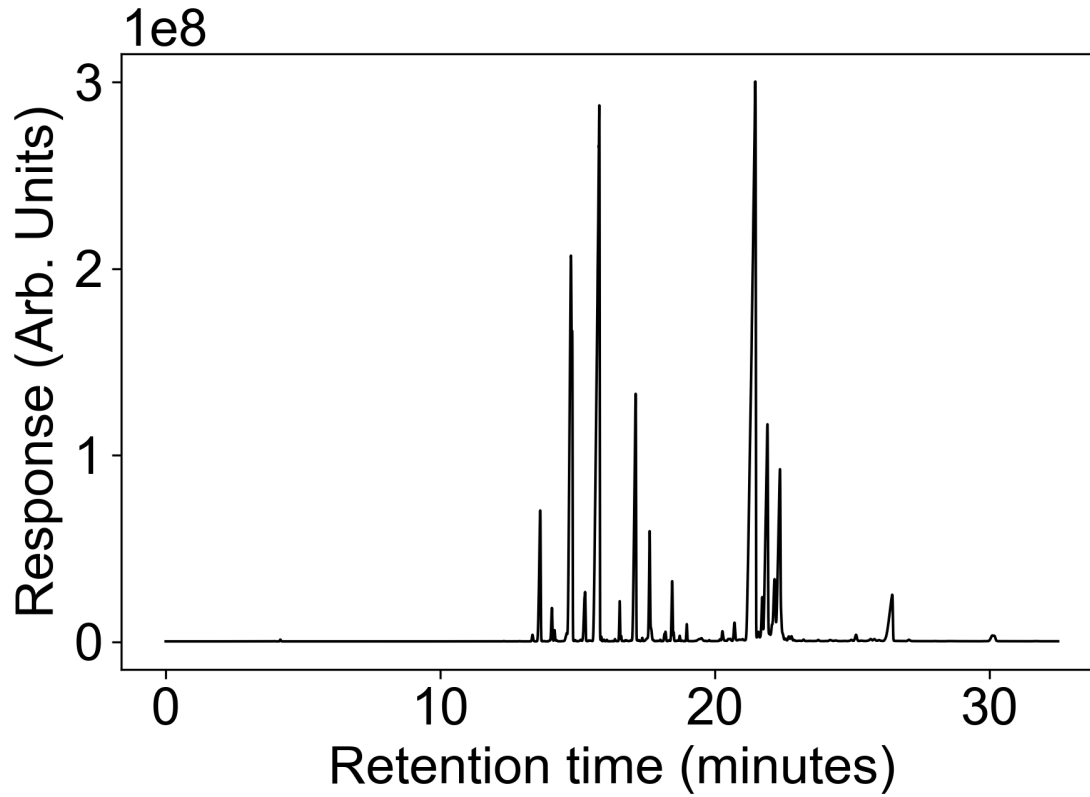
Methylene Chloride

Pentane

www.abstraxtech.com | info@abstraxtech.com | 15550 Rockfield Blvd., Suite B 120 | Irvine, CA

Propane
Trichloroethylene
Toluene

M-xylene
O-xylene
P-xylene



DATA REVIEWED AND APPROVED

BY:

A handwritten signature in black ink, consisting of stylized cursive letters, is written over a horizontal line.

This Certificate of Analysis is accurate to the best of our knowledge. However, the customer is responsible for performing its own assessment to ensure that the material is suitable for its intended applications, including compliance with all pertinent legal requirements. The expected shelf life is calculated from the original manufacture date and is based on unopened containers stored under proper conditions. Once containers have been opened, maintaining minimal headspace and storing under appropriate conditions will aid in preserving the product's integrity.