

# PARTS LIST

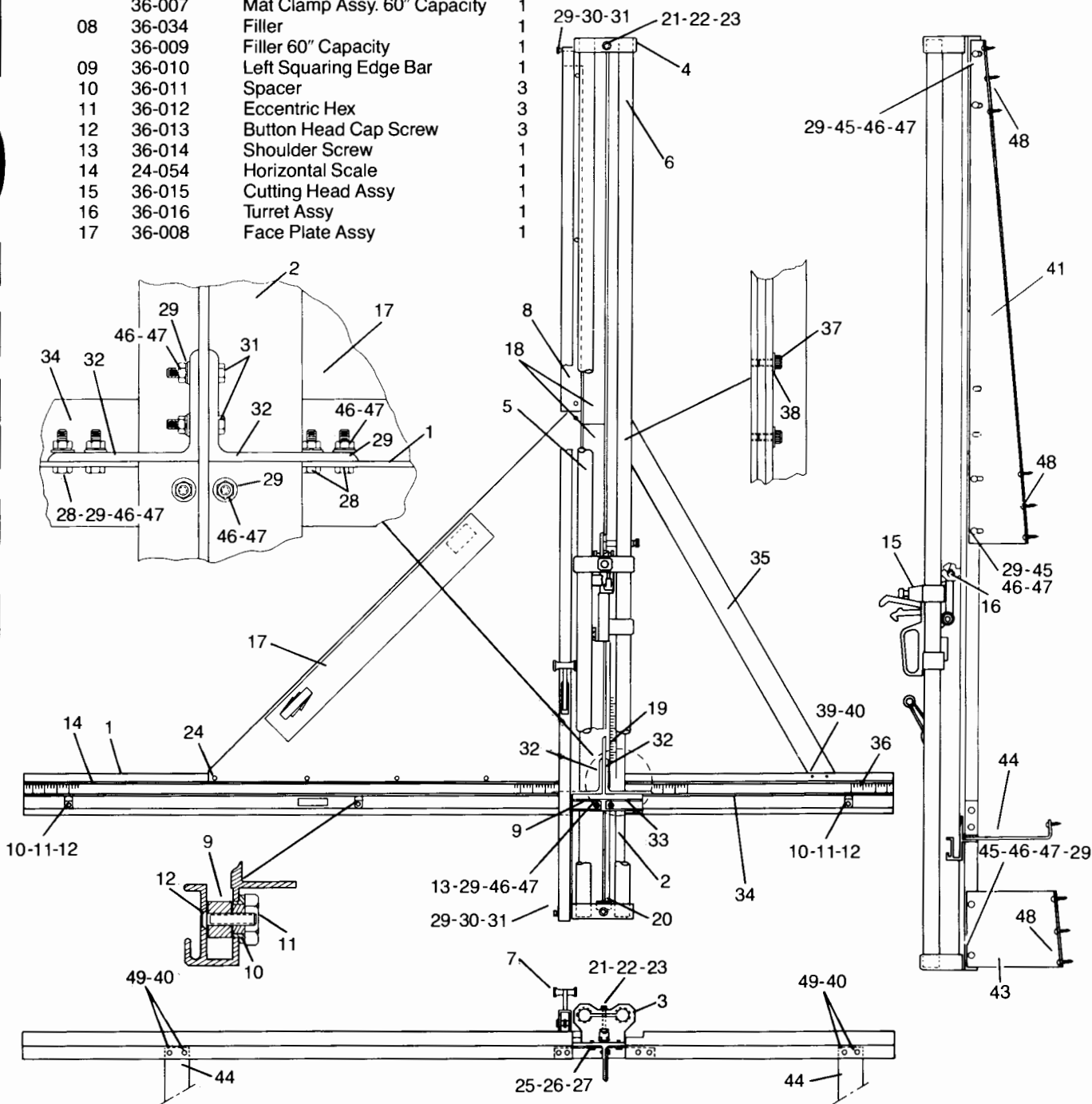
# PARTS LIST

### FRAME PARTS

Ref. No.	Part No.	Description	Quantity
01	36-001	Left Horiz. Support	1
02	36-031	Vertical Extrusion	1
	36-002	Vertical Extrusion 60" Capacity	1
03	36-003	Lower End Bracket	1
04	36-004	Upper End Bracket	1
05	24-056	Left Tube	1
	24-057	Left Tube 60" Capacity	1
06	36-032	Right Tube	1
	36-005	Right Tube 60" Capacity	1
07	36-033	Mat Clamp Assy	1
	36-007	Mat Clamp Assy. 60" Capacity	1
08	36-034	Filler	1
	36-009	Filler 60" Capacity	1
09	36-010	Left Squaring Edge Bar	1
10	36-011	Spacer	3
11	36-012	Eccentric Hex	3
12	36-013	Button Head Cap Screw	3
13	36-014	Shoulder Screw	1
14	24-054	Horizontal Scale	1
15	36-015	Cutting Head Assy	1
16	36-016	Turret Assy	1
17	36-008	Face Plate Assy	1

### FRAME PARTS

Ref. No.	Part No.	Description	Quantity
18	24-029	Wear Plate	2
	24-030	Wear Plate 60" Capacity	2
19	24-052	Vertical Scale	1
	24-053	Vertical Scale 60" Capacity	1
20	24-099	Rubber Bumper	1
21	24-122	Hex Head Bolt	2
22	24-121	Washer	2
23	36-017	Square Nut	2
24	36-018	Rivet	13
25	36-019	Hex Head Bolt	4



# PARTS LIST

# PARTS LIST

## FRAME PARTS

Ref. No.	Part No.	Description	Quantity
26	36-020	Lock Washer	4
27	36-021	Washer	4
28	36-022	Hex Head Bolt	2
29	36-023	Washer	6
30	36-024	Spacer-Mat Clamp	1
31	36-025	Hex Bolt	3
32	36-026	Angle Bracket	2
33	36-028	Right Squaring Edge Bar	1
34	36-027	Right Horiz. Support	1
35	36-030	Brace	1
36	36-029	Support Scale	1
37	36-054	Hex Cap Screw	2
38	24-130	Washer	2
39	12-024	Flat HD Mach Screw	2
40	24-311	Hex Nut	6
41	24-197	Upper Bkt	1
43	24-094	Lower Bracket	1
	24-095	Lower Bracket 60" Capacity	1
44	24-096	Horizontal Support	2
	24-097	Horizontal Support 60" Capacity	2
45	24-288	Hex Head Bolt	6
46	24-153	Lock Washer	14
47	24-196	Hex Nut	14
48	24-205	Wall Mounting Screw	13
49	12-020	Pan HD Mach Screw	4

## CUTTING HEAD PARTS

Ref. No.	Part No.	Description	Quantity
08	36-040	Lever Assembly	1
09	24-113	Adjusting Screw	1
10	36-041	Wear Pad	2
11	36-042	Pivot Arm	2
12	24-116	Washer	2
13	24-082	Roller (Inside)	1
14	36-043	Shaft	1
15	24-084	Roller Shaft	1
16	24-083	Roller Outside	2
17	24-115	Roller Washer	2
18	24-410	Retaining Ring	2
19	24-104	Pressure Adjusting Screw	1
20	24-106	Bushing	3
21	36-044	Set Screw	1
22	36-016	Turret Assembly	1
23	36-046	Ramp	1
24	36-047	Ramp Screw	1
25	36-048	Mat Blade Screw	1
26	36-049	Plastic Blade Screw	1
27	36-050	Turret Screw	1
28	36-051	Spring	1
29	36-052	Knob	1
30	36-053	Set Screw	1
31	24-101	Extension Spring	1

## CUTTING HEAD PARTS

Ref. No.	Part No.	Description	Quantity
01	36-056	Head Sub Assembly	1
02	24-136	Bushing	1
03	36-036	Compression Spring	1
04	36-037	Rocker Arm Assembly	1
05	36-038	Shaft	2
06	24-114	Retaining Ring	6
07	36-039	Trigger	1

