

# PARTS LIST

## FLETCHER 2100 ASSEMBLY

| Ref. No. | Part No. | Description                | Quantity |
|----------|----------|----------------------------|----------|
| 1        | 12-504   | Mat Guide Slide            | 1        |
| 2        | 12-004   | Scale                      | 1        |
| 3        | 12-505   | Mat Guide Assy. 40" & 48"  | 1        |
|          | 12-506   | Mat Guide Assy. 60"        | 1        |
| 4        | 12-507   | Locking Strap              | 1        |
| 5        | 12-508   | Handle 40"                 | 1        |
|          | 12-006   | Handle 48"                 | 1        |
|          | 12-121   | Handle 60"                 | 1        |
| 6        | 12-007   | Handle End Cap             | 2        |
| 7        | 12-008   | Hinge Bracket              | 2        |
| 8        | 12-009   | Hinge                      | 2        |
| 9        | 12-010   | Pivot Shaft                | 2        |
| 10       | 12-011   | Shaft Bracket              | 2        |
| 11       | 12-012   | Shoulder Screw             | 2        |
| 12       | 12-013   | Spring Washer              | 2        |
| 13       | 12-014   | Locator Pin                | 2        |
| 14       | 12-015   | Mat Gage                   | 1        |
| 15       | 12-510   | Cutting Head Assy.         | 1        |
| 16       | 12-511   | Mat Clamp Assy. 40"        | 1        |
|          | 12-512   | Mat Clamp Assy. 48"        | 1        |
|          | 12-513   | Mat Clamp Assy. 60"        | 1        |
| 17       | 12-020   | Pan Head Screw             | 1        |
| 18       | 12-024   | Flat Head Screw            | 1        |
| 19       | 12-031   | Inch Scale                 | 1        |
| 20       | 12-032   | Metric Scale               | 1        |
| 21       | 12-039   | Scale Indicator            | 1        |
| 22       | 12-040   | Pan Head Screw             | 1        |
| 23       | 12-041   | End Cap                    | 2        |
| 24       | 12-042   | Mat Stop Knob              | 1        |
| 25       | 12-043   | Washer                     | 1        |
| 26       | 12-044   | Mat Stop                   | 1        |
| 27       | 12-046   | Acorn Nut                  | 2        |
| 28       | 12-047   | Plastic Knob               | 1        |
| 29       | 12-514   | Key                        | 1        |
| 30       | 12-052   | Wear Tape                  | 5        |
| 31       | 12-054   | End Cap Screw              | 20       |
| 32       | 12-126   | Flat Head Screw            | 1        |
| 33       | 12-127   | Lock Washer                | 1        |
| 34       | 12-128   | Acorn Nut                  | 1        |
| 35       | 12-543   | Mat Guide Squaring Block 2 |          |

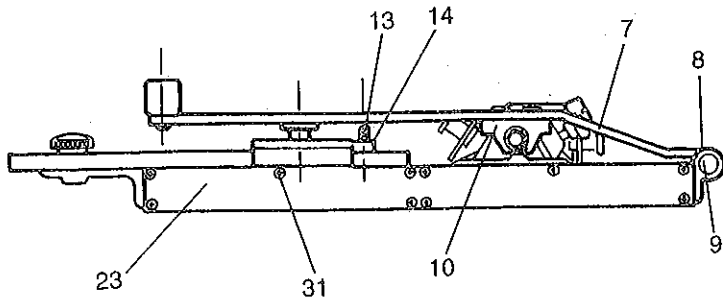
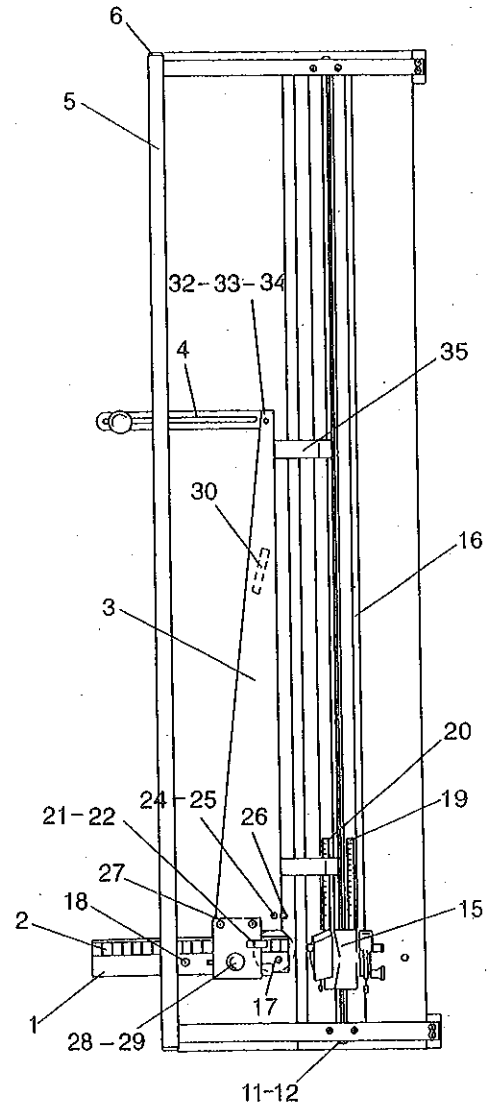


Figure 12



# PARTS LIST

## CUTTING HEAD

| Ref. No. | Part No. | Description           | Quantity |
|----------|----------|-----------------------|----------|
| 1        | 12-510   | Cutting Head Assy.    | 1        |
| 2        | 12-529   | Pivot Head Assy. (LH) | 1        |
| 3        | 12-530   | Extension Spring (LH) | 1        |
| 4        | 12-531   | Stainless Washer      | 1        |
| 5        | 12-532   | Pivot Screw           | 2        |
| 6        | 12-533   | Shim Washer           | 2        |
| 7        | 12-534   | Comfort Grip (LH)     | 1        |
| 8        | 12-535   | Knob (LH)             | 1        |
| 9        | 12-536   | Flat Head Screw       | 3        |
| 10       | 12-073   | Ball Bearing          | 3        |
| 11       | 12-537   | Shoulder Screw        | 2        |
| 12       | 12-538   | Bushing               | 2        |
| 13       | 12-539   | Pivot Head Assy. (RH) | 1        |
| 14       | 12-062   | Nylon Washer          | 1        |
| 15       | 12-063   | Extension Spring (RH) | 1        |
| 16       | 12-077   | Finger Pad            | 1        |
| 17       | 12-540   | Cover Assy. (RH)      | 1        |
| 18       | 12-075   | Knob                  | 1        |
| 19       | 12-069   | Detent Spring         | 1        |
| 20       | 12-542   | Magazine Assembly     | 2        |

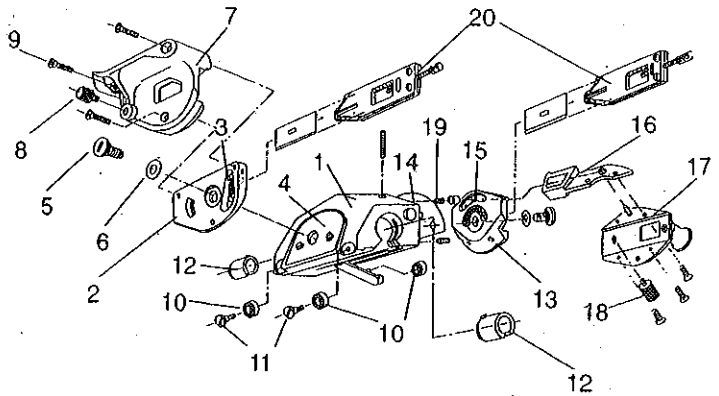


Figure 10