

The background of the image is a low-angle shot of a modern glass skyscraper. The sky is a deep blue, and the building's glass panels reflect the sky and the interior lights of the building. Overlaid on this background are several large, semi-transparent, colorful geometric shapes in shades of blue, green, yellow, orange, and red, which appear to be light rays or beams emanating from the building's interior. The text is positioned in the upper left quadrant of the image.

Mills[™] Lighting

Human-centric Lighting for
Workplaces, Education and Hospitals
Standards Manual, DLC 4.2

1'x1' Series

FLAT LED PANEL

1'x1' Surface Mount



Project Name

Project: _____

Location: _____

Cat. No: _____

Type: _____

Qty: _____

Notes: _____

LED panels from Mills Lighting™ promise huge energy savings and longer lamp life all backed up by a 10 year warranty. Reduce energy and lamp replacement costs with our new long-life, long-warranty LED panels.

Mills built-in driver triac dimmable 1x1 flat panel lights are designed for surface mount installation which mounts quickly to 4 in. junction boxes. Energy Star and UL for damp locations.

Ordering Guide

EXAMPLE: M-LED-PANEL-11-18W-3500K-W-82-I-D

TYPE	PANEL SIZE	WATTAGE	VOLTAGE	CCT	FRAME COLOR	CRI	DRIVER	DIMMING
M-LED-PANEL	1'x1' = 11	18 watts = 18W 25 watts = 25W	120-277V=UNV	3000K=3000K 3500K=3500K 4000K=4000K 4500K=4500K 5000K=5000K	W=White	CRI >82 = 82 CRI >90, R9 >50 = 90	Internal = I	0-10v = D

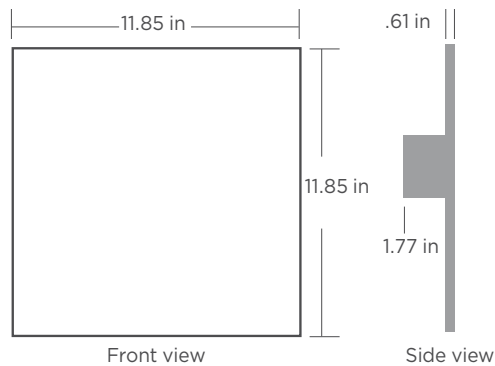
Mills Lighting Quick Ship Program

MODEL #

M-LED-PANEL-11-18W-4000K-W-82-I-D

1'x1' Series | FLAT LED PANEL

1'x1' Surface Mount



Specifications

Features

The perfect LED replacement solution for fluorescent and LED tubes.

- » Dimming is 0-10V technology
- » Avail in 82 or 92 CRI
- » Avail in 50+ R9 value
- » IC rated for direct contact with insulation
- » 10 year warranty
- » For office buildings, schools, universities, hotels, retail & more.
- » UL listed
- » Energy Star
- » Flicker-Free LED Driver
- » Earthquake clips come installed on panel
- » Low glare technology, UGR <20
- » 120 - 277V Universal Voltage

HE LED Wattage and Lumen Values

Watts	Lumens	Lumens per watt
18w	1800	100 l/w
25w	2500	100 l/w

CQ LED Wattage and Lumen Values

Watts	Lumens	Lumens per watt
40w	4000	100 l/w
50w	5000	100 l/w
60w	6000	100 l/w



70,000

70,000 Hours
Lamp Life



Up To 80%
Direct Energy
Savings



10 Year
Warranty

© 2017 Mills Lighting. All rights reserved.

Mills Lighting reserves the right to make changes in specifications and/or to discontinue any product at any time without notice or obligation and will not be liable for any consequences resulting from the use of this publication.

Mills™ Lighting

Mills Labs | 3000 E Main Street, #152 Columbus, Ohio 43209
Tel. 800-690-6403

Lighting.MillsLabs.com

DLC 4.2 CQ Color Quality
CRI >90, R9 >50 Series

FLAT LED PANEL

2'x2', 1'x4', 2'x4'



Project Name

Project: _____
 Location: _____
 Cat. No: _____
 Type: _____
 Qty: _____
 Notes: _____

LED panels from Mills Lighting™ promise huge energy savings and longer lamp life all backed up by a 10 year warranty. Reduce energy and lamp replacement costs with our new long-life, long-warranty LED panels. Damp location-rated design with 70,000 hours lamp life. UL Listed. DLC 4.2 Qualified.

Ordering Guide

EXAMPLE: M-LED-PANEL-22-40W-3500K-W-90-I-D

TYPE	PANEL SIZE	WATTAGE	VOLTAGE	CCT	FRAME COLOR	CRI	DRIVER	DIMMING
M-LED-PANEL	2'x2' = 22	40 watts = 40W	120-277V=UNV	3000K=3000K	W=White	CRI >90, R9 >50 = 90	Internal = I	0-10v = D
	1'x4' = 14	50 watts = 50W		3500K=3500K				
	2'x4' = 24	60 watts = 60W		4000K=4000K				
				4500K=4500K				
				5000K=5000K				

Mills Lighting Quick Ship Program

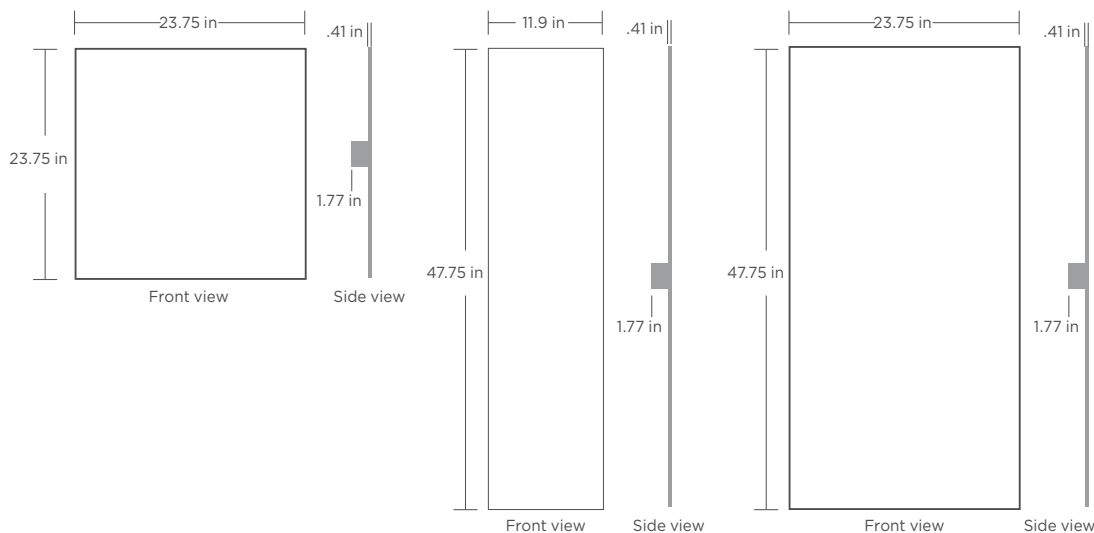
MODEL #
M-LED-PANEL-22-40W-4000K-W-90-I-D
M-LED-PANEL-24-50W-4000K-W-90-I-D

Accessories (order separately)

MODEL #	DESCRIPTION
M-SM-PF-22-W	Surface Mount Panel Frame, 2'x2', White
M-SM-PF-14-W	Surface Mount Panel Frame, 1'x4', White
M-SM-PF-24-W	Surface Mount Panel Frame, 2'x4', White
M-P-SK-22	Suspension Kit for 2'x2' Panel, 2 sets
M-P-SK-14	Suspension Kit for 1'x4' Panel, 3 sets
M-P-SK-24	Suspension Kit for 2'x4' Panel, 3 sets
M-P-EQK-22	Earthquake Clips for 2'x2' Panel, 4 pcs, included
M-P-EQK-14	Earthquake Clips for 1'x4' Panel, 6 pcs, included
M-P-EQK-24	Earthquake Clips for 2'x4' Panel, 6 pcs, included

DLC 4.2 CQ Color Quality CRI >90, R9 >50 Series | FLAT LED PANEL

2'x2', 1'x4', 2'x4' Color Quality LED Panel



Specifications

Features

The perfect LED replacement solution for fluorescent and LED tubes.

- » Dimming is 0-10V technology
- » IC rated for direct contact with insulation
- » 1'x4', 2'x2', 2'x4'
- » 10 year warranty
- » For office buildings, schools, universities, hotels, retail & more.
- » UL listed
- » DLC 4.2 qualified
- » Flicker-Free LED Driver
- » Earthquake clips come installed on panel
- » Low glare technology, UGR <20
- » 120 - 277V Universal Voltage

LED Wattage and Lumen Values

Watts	Lumens	Lumens per watt
40w	4000	100 l/w
50w	5000	100 l/w
60w	6000	100 l/w



70,000 Hours
Lamp Life



Up To 80%
Direct Energy
Savings



10 Year
Warranty

© 2017 Mills Lighting. All rights reserved.

Mills Lighting reserves the right to make changes in specifications and/or to discontinue any product at any time without notice or obligation and will not be liable for any consequences resulting from the use of this publication.

Mills™ Lighting

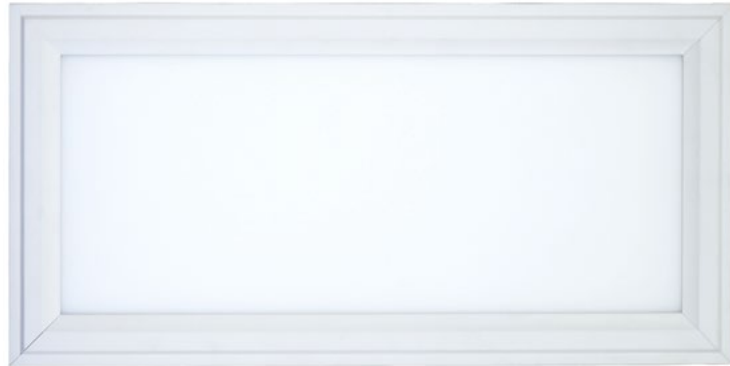
Mills Labs | 3000 E Main Street, #152 Columbus, Ohio 43209
Tel. 800-690-6403

Lighting.MillsLabs.com

DLC 4.2 HE
High Efficiency Series

FLAT LED PANEL

2'x2', 1'x4', 2'x4', Integral driver



Project Name

Project: _____
 Location: _____
 Cat. No: _____
 Type: _____
 Qty: _____
 Notes: _____

LED panels from Mills Lighting™ promise huge energy savings and longer lamp life all backed up by a 10 year warranty. Reduce energy and lamp replacement costs with our new long-life, long-warranty LED panels. Damp location-rated design with 70,000 hours lamp life. UL Listed. DLC 4.2 Qualified.

Ordering Guide

EXAMPLE: M-LED-PANEL-22-40W-3500K-W-82-I-D

TYPE	PANEL SIZE	WATTAGE	VOLTAGE	CCT	FRAME COLOR	CRI	DRIVER	DIMMING
M-LED-PANEL	2'x2' = 22	40 watts = 40W	120-277V=UNV	3000K=3000K	W=White	82 CRI=82	Internal = I	0-10v = D
	1'x4' = 14	50 watts = 50W		3500K=3500K				
	2'x4' = 24	60 watts = 60W		4000K=4000K				
				4500K=4500K				
			5000K=5000K					

Mills Lighting Quick Ship Program

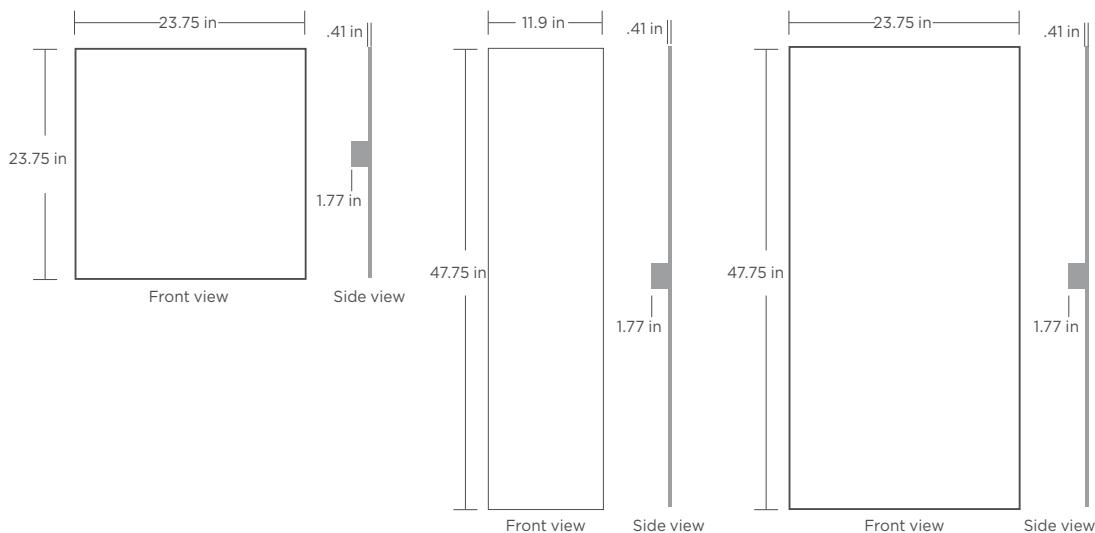
MODEL #
M-LED-PANEL-22-40W-3500K-W-82-I-D
M-LED-PANEL-14-40W-3500K-W-82-I-D
M-LED-PANEL-24-40W-3500K-W-82-I-D
M-LED-PANEL-22-40W-4000K-W-82-I-D
M-LED-PANEL-24-50W-4000K-W-82-I-D

Accessories (order separately)

MODEL #	DESCRIPTION
M-SM-PF-22-W	Surface Mount Panel Frame, 2'x2', White
M-SM-PF-14-W	Surface Mount Panel Frame, 1'x4', White
M-SM-PF-24-W	Surface Mount Panel Frame, 2'x4', White
M-P-SK-22	Suspension Kit for 2'x2' Panel, 2 sets
M-P-SK-14	Suspension Kit for 1'x4' Panel, 3 sets
M-P-SK-24	Suspension Kit for 2'x4' Panel, 3 sets
M-P-EQK-22	Earthquake Clips for 2'x2' Panel, 4 pcs, included
M-P-EQK-14	Earthquake Clips for 1'x4' Panel, 6 pcs, included
M-P-EQK-24	Earthquake Clips for 2'x4' Panel, 6 pcs, included

DLC 4.2 HE High Efficiency Series | FLAT LED PANEL

2'x2', 1'x4', 2'x4' High Efficiency LED Panel



Specifications

Features

The perfect LED replacement solution for fluorescent and LED tubes.

- » Dimming is 0-10V technology
- » IC rated for direct contact with insulation
- » 1'x4', 2'x2', 2'x4'
- » 10 year warranty
- » For office buildings, schools, universities, hotels, retail & more.
- » UL listed
- » DLC 4.2 qualified
- » Flicker-Free LED Driver
- » Earthquake clips come installed on panel
- » Low glare technology, UGR <20
- » 120 - 277V Universal Voltage

LED Wattage and Lumen Values

Watts	Lumens	Lumens per watt
18w	1800	100 l/w
25w	2500	100 l/w
40w	4400	110 l/w
50w	5500	110 l/w
60w	6600	110 l/w



70,000 Hours Lamp Life



Up To 80% Direct Energy Savings



10 Year Warranty

© 2017 Mills Lighting. All rights reserved.

Mills Lighting reserves the right to make changes in specifications and/or to discontinue any product at any time without notice or obligation and will not be liable for any consequences resulting from the use of this publication.

Mills™ Lighting

Mills Labs | 3000 E Main Street, #152 Columbus, Ohio 43209
Tel. 800-690-6403

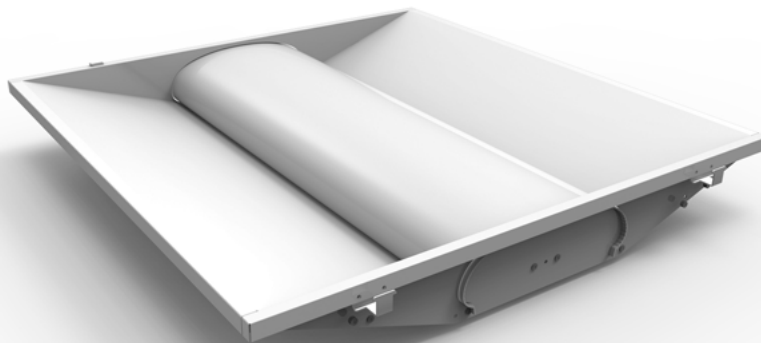
Lighting.MillsLabs.com

HE TROFFER
High Efficiency Series

RECESSED TROFFER

140 Lumens per watt

Designed to replace recessed fluorescent troffers, Mills LIGHTING troffers adopt state-of-the-art optical and LED lighting technology for use in classroom, workplace, hospital applications. Mills recessed troffers provide light uniformity, eliminating shadows. High efficiency 140 lumens per watt. Cost effective, Easy to install. Excellent heat dissipation. 75,000 hours. UL listed for damp locations. DLC 4.2 Qualified. 0-10v Dimming Technology.



Project Name

Project: _____

Location: _____

Cat. No: _____

Type: _____

Qty: _____

Notes: _____

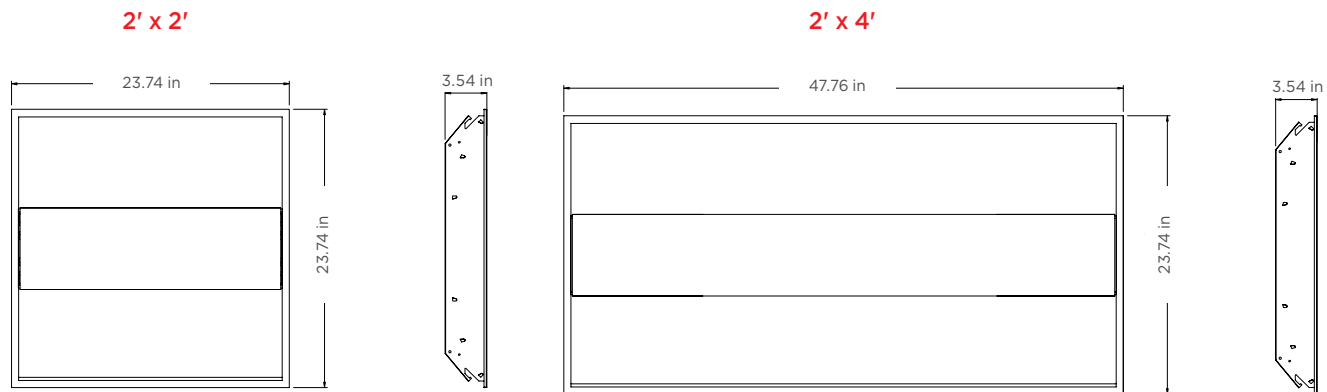
Ordering Guide

EXAMPLE: M-LED-HET-22-30W-UNV-3500K-W-I-D

TYPE	PANEL SIZE	WATTAGE	VOLTAGE	CCT	FRAME COLOR	CRI	DRIVER	DIMMING
M-LED-HET	2'x2' = 22	20 watts* = 20W	120-277 = UNV	3000K=3000K	White=W	82 CRI=82	Internal = I	0-10v = D
	2'x4' = 24	30 watts = 30W		3500K=3500K				
		40 watts = 40W		4000K=4000K				
		50 watts = 50W		4500K=4500K				
			5000K=5000K					

HE Troffer | RECESSED TROFFER

140 Lumens per watt



Specifications

Features

The perfect LED replacement solution for recessed fluorescent troffers.

- » Perfect light uniformity
- » No shadow, no dark area
- » SMD 2835 up to 140lm/w
- » Cost effective, easy to install
- » CRI \geq 80 PF $>$ 0.9 THD $<$ 20%
- » High quality PC cover, light transmittance up to 90%, Anti-UV
- » Integrated design, superior cold-roll steel plate, excellent heat dissipation and strength support

LED Wattage and Lumen Values

Watts	Lumens	Lumens per watt
20w	2835	140 l/w
30w	4200	140 l/w
40w	5600	140 l/w
50w	7000	140 l/w



75,000

75,000 Hours
Lamp Life



Up To 80%
Direct Energy
Savings



10 Year
Warranty

© 2017 Mills Lighting. All rights reserved.

Mills Lighting reserves the right to make changes in specifications and/or to discontinue any product at any time without notice or obligation and will not be liable for any consequences resulting from the use of this publication.

Mills™ Lighting

Mills Labs | 3000 E Main Street, #152 Columbus, Ohio 43209
Tel. 800-690-6403

Lighting.MillsLabs.com

LED TUBE

CLARITY

8, 12, 16, 20 watts



Dual mode LED tube 8, 12, 16, 20W

- » Directly replace fluorescent 2ft, 4ft T8-plug and play, no rewiring
- » Fully compatible with most magnetic ballasts or electronics ballasts
- » Fully functional by-passing existing ballast in the circuit
- » Double End Power & Single End Power BOTH work
- » Lumen efficiency of 120lm/W, 50% energy saving
- » CRI: Ra>80, THD<20
- » UL Listed. DLC 4.2 Qualified
- » 5 year Warranty

LUMENS

8W = 960L

12W = 1440L

16W = 1920L

20W = 2400L

Project Name

Project: _____

Location: _____

Cat. No: _____

Type: _____

Qty: _____

Notes: _____

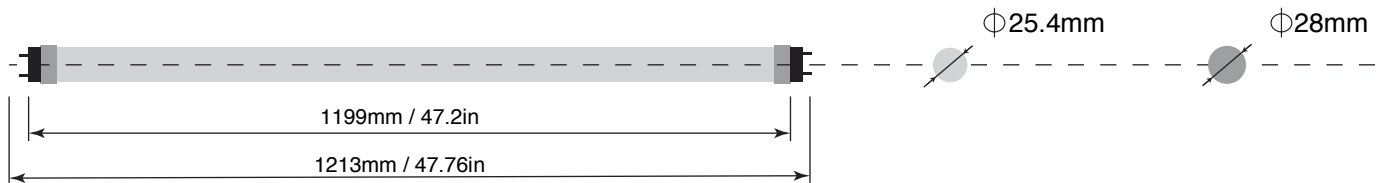
Ordering Guide

EXAMPLE: M-LED-TUBE-16-T8-L24-F-8-4000K-M

TYPE	POWER	SIZE	LENGTH	LENS	CRI	CCT	BALLAST COMPATIBILITY
M-LED-TUBE	8W	T8	L24 = 24 in.	F = Frosted	8 = 82 CRI	3500K = 3500K	M = Install with ballast or direct wire
	12W		L48 = 48 in.	C = Clear		4000K = 4000K	
	16W					4500K = 4500K	
	20W					5000K = 5000K	

CLARITY | LED Tube

8, 12, 16, 20 watts



Features

- » LED type: 114 pcs SMD2835
- » Luminous Efficacy: 120lm/W
- » Power: 18W (rated), 18W +/- 1.5W (actual)
- » Power Factor: >0.95
- » THD: <20
- » Lens Option: Frosted, Clear
- » Color Temperature: 3000K, 4000K, 5000K
- » CRI: Ra>82
- » Connectors: G13
- » Beam Angle: 150 degree
- » Net Weight: 0.7kg/pc
- » Instant on, no flicker or buzz
- » Directly replace fluorescent 4ft T8-plug and play, no rewiring
- » Fully compatible with most of magnetic ballast or electronics ballast
- » Fully functional by-passing existing ballast in the circuit
- » Warranty: 5 years
- » Certificate: UL/cUL (E346471), DLC 4.2



50,000 Hours
Lamp Life



Up To 80%
Direct Energy
Savings



5 Year
Warranty

© 2017 Mills Lighting. All rights reserved.

Mills Lighting reserves the right to make changes in specifications and/or to discontinue any product at any time without notice or obligation and will not be liable for any consequences resulting from the use of this publication.

Mills™ Lighting

Mills Labs | 3000 E Main Street, #152 Columbus, Ohio 43209
Tel. 800-690-6403

Lighting.MillsLabs.com

MILLS LABS HUMAN-CENTRIC LIGHTING FOR WORKPLACES, EDUCATION AND HOSPITALS

Standards Manual brings you a complete line of flicker-free, low-glare LED flat panels, troffers and retrofit T8 tube lamps. Our panel and troffer luminaires have a 75,000 hour lifetime 10-yr warranty, and our retrofit lamps have a 50,000 hour lifetime 5-yr warranty. Simply install and turn on the savings.
