

FLAT PANEL



WARNING

1. Risk of fire or electric shock. Install only the kit with construction features and dimensions shown in the photographs and/or drawings.
2. To prevent wiring damage or abrasion, do not expose wiring to edges of sheet metal or other sharp objects.
3. Do not make or alter any open holes in an enclosure of wiring or electrical components during kit installation.
4. RISK OF FIRE OR ELECTRIC SHOCK. DO NOT ALTER, RELOCATE, OR REMOVE WIRING, LAMP HOLDERS, POWER SUPPLY, OR ANY OTHER ELECTRICAL COMPONENTS.
5. RISK OF FIRE OR ELECTRIC SHOCK. INSTALLATION OF THIS RETROFIT ASSEMBLY REQUIRES A PERSON FAMILIAR WITH THE CONSTRUCTION AND OPERATION OF THE LUMINAIRE'S ELECTRICAL SYSTEM AND THE HAZARD INVOLVED. IF NOT QUALIFIED, DO NOT ATTEMPT INSTALLATION. CONTACT A QUALIFIED ELECTRICIAN.

CAUTION

1. SHOCK AND FIRE HAZARD, DO NOT USE WHEN ENCLOSURE IS BROKEN.
2. SUITABLE FOR DAMP LOCATIONS.
3. SUITABLE FOR TYPE IC or SUITABLE FOR TYPE NON-IC.
4. Maximum of 8 pieces of NO.12 AWG through branch circuit conductor.
5. Input: 100-277V AC, 50/60Hz Power: 40W, 50W, 60W

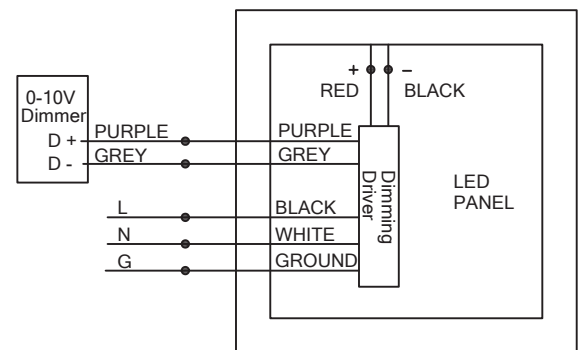
DIMMING

The LED luminaire can be dimmed with many standard incandescent dimmers, however an electronic low voltage version of a standard dimmer (with neutral connection) is recommended. Updates in dimmer technology and special conditions may apply depending on the dimmer type being used. To be assured of the latest information regarding luminaire and dimmer compatibility, please contact dimmer manufacturer.

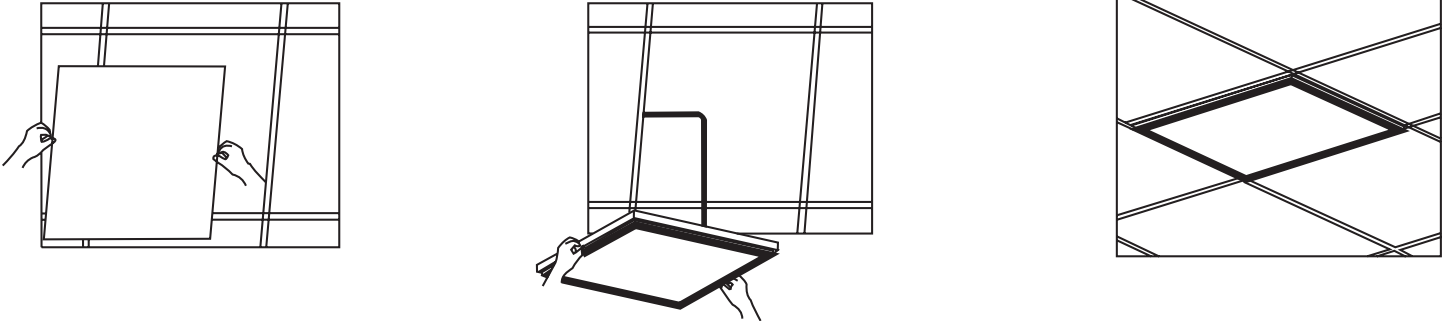
For 0-10V Dimming

1. Compatible with 0-10V dimmer.
2. The driver PUR (D+) to the dimmer+(PUR) and the driver GRY (D-) to the dimmer (GRY).
3. Connect the wires with terminal cap as shown in wiring diagram.
4. Incoming insulated dimming conductors shall have voltage rated at least equal to branch voltage.

WIRING DIAGRAM

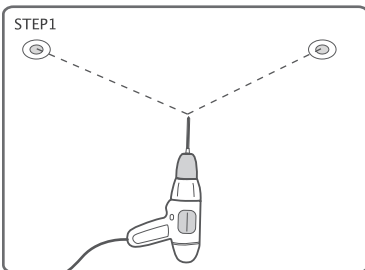


LAY-IN

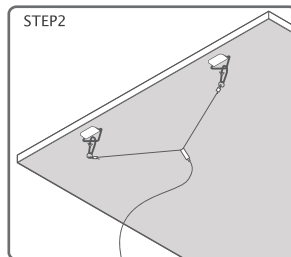


SUSPENSION

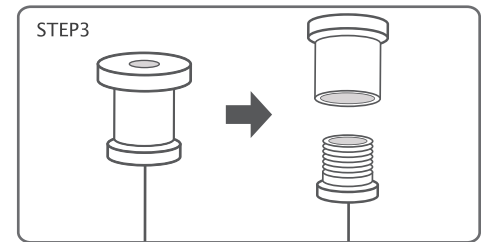
According to the width of the panel light, drill 2 mounting holes for the mounting position.



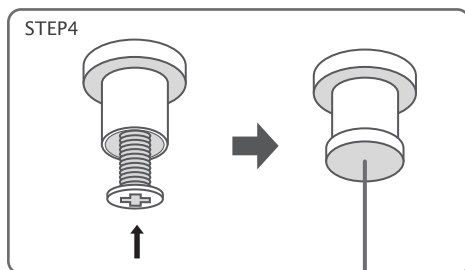
Attach the panel light with the dog buckle of the equipped cable.



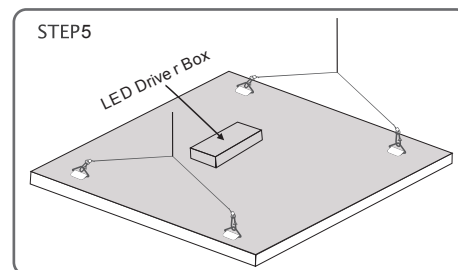
Unscrew the cable attachment device into two parts: upper and lower part as seen in Step 3.



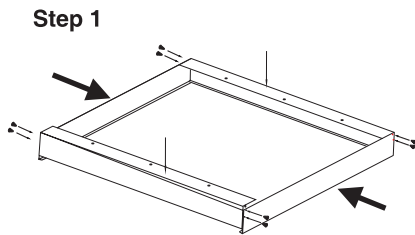
Fix the upper part into the prepared mounting holes with self-tapping screws (not included) and then screw on the lower part.



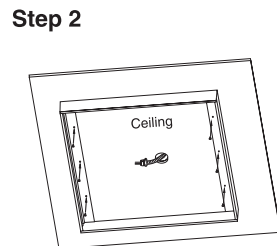
Connect LED panel by the hook of the suspension cable.



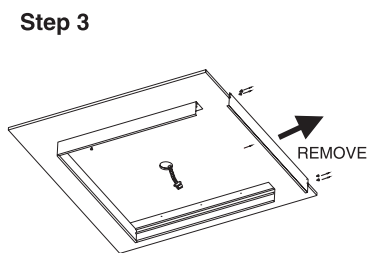
SURFACE MOUNT



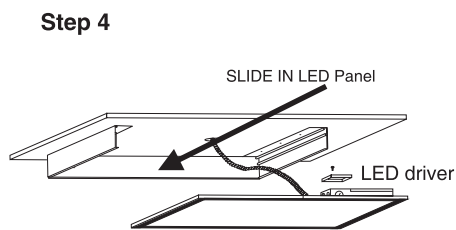
Assemble the mounting frame with the 8 screws included.



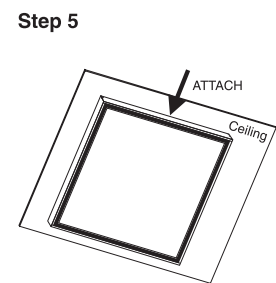
Mount the frame on the ceiling with screws (not included). Make sure the cable is long enough for Step 4.



After mounting the frame on ceiling, remove one side of the mounting frame.



Connect the incoming wires to the LED driver. Then slide the LED panel unit into the frame.



Replace the side of the frame.

WARNING

DISCONNECT POWER DURING INSTALLATION