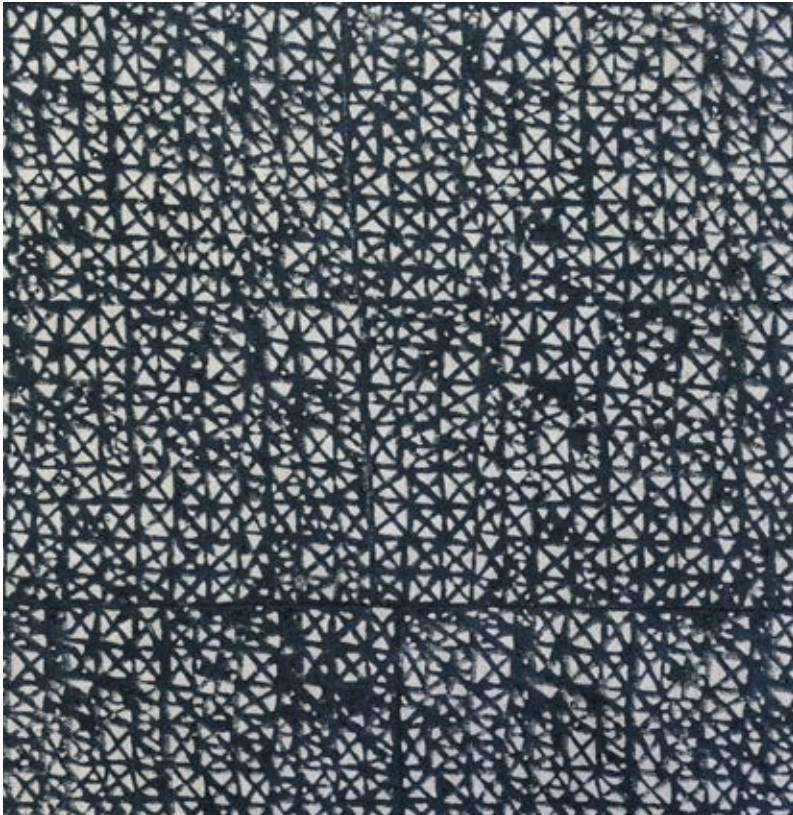


SEVILLE

INDIAN TEAL



SELVEDGE

Much like the Moorish town this design is inspired by, Seville has a complex simplicity. The intricate line work echos the detail of the stone jali screens found at the Alcázar in Seville.

This design has been printed by hand. Due to the nature of this process, subtle imperfections and variations in colour may occur. Please request a CFA.

SKU: LINN17.001

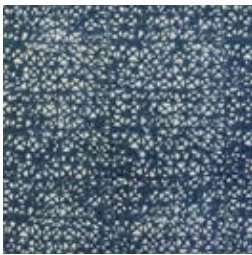
COLOUR: Indian Teal

CONTENT: 100% Oatmeal Linen

WIDTH: 55" / 140cm

REPEAT: **H:** 6¼" / 16cm, **V:** 8¼" / 21cm

USAGE: Drapery and light upholstery



LINN17.002

DENIM

Oatmeal Linen