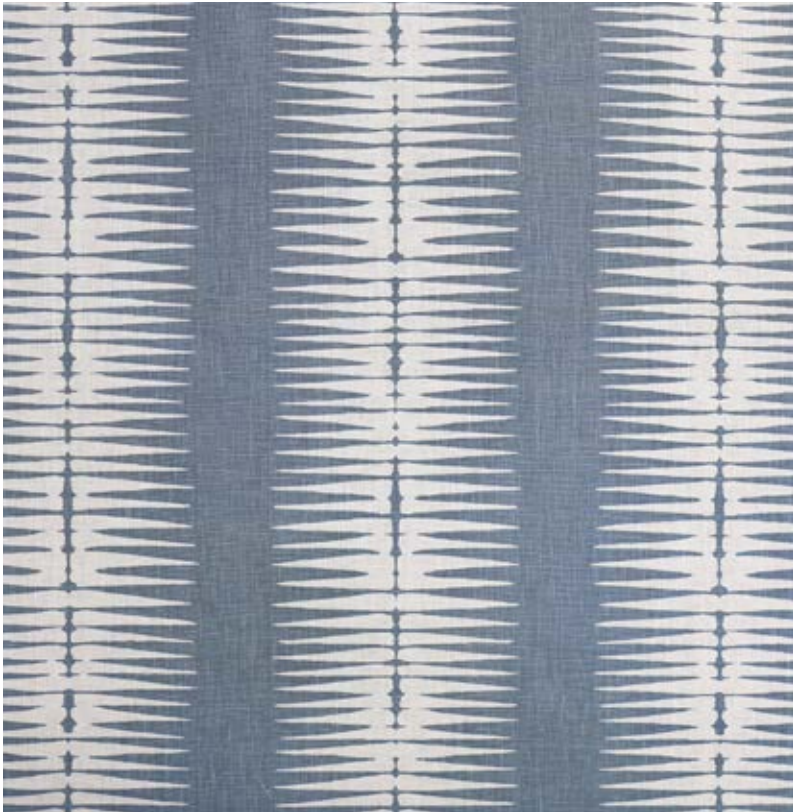


IKAT

DUSK



SELVEDGE

Influenced by the traditional ikat weaving of Central Asia, the striking geometric nature of this design makes for high impact drapery and upholstery.

This design has been printed by hand. Due to the nature of this process, subtle imperfections and variations in colour may occur. Please request a CFA.

SKU: BLIN16.004

COLOUR: Dusk

CONTENT: 100% Oyster Linen

WIDTH: 52" / 132cm

REPEAT: **H:** 6"/15.5cm, **V:** 8"/20.5cm

USAGE: Drapery and light upholstery



BLIN16.003

CHALK

Oatmeal Linen



BLIN16.002

INDIAN TEAL

Oatmeal Linen