



Idiopan Domina

12-inch 8-note steel tongue drum

The Idiopan Domina is the middle-ranged centrepiece of the tuneable drums we offer. There are so many contributing factors as to why this is our best-selling model. Described as a “female voice”, the Domina produces soothing mellow tones that are incomparable to any other instrument on the market. Each strike of the tongues brings an overwhelming sense of endless tranquillity to the player and those around them.

Notation Legend

Tongue drum Music can be notated two different ways: on a *musical staff* and in *number line*.

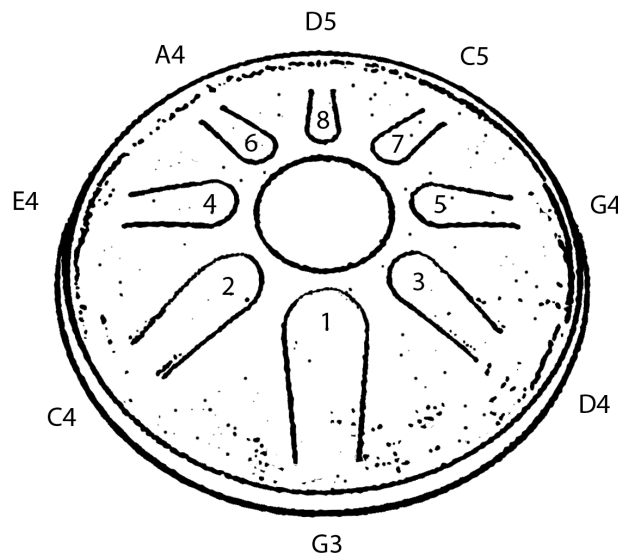
THE MUSICAL STAFF shows pitches and rhythms and is divided by bar lines into measures.

THE NUMBER LINE is written above the staff and it shows the numbers of tongues to be played. Hyphen indicates the quarter note beats and helps to count the longer notes and rests. Rests smaller than quarter note are not indicated in the number line.

The Domina 12-inch 8-note steel tongue drum arrives tuned to the C Major pentatonic scale.

Tongue number	1	2	3	4	5	6	7	8
Note in the musical staff								
	G3	C4	D4	E4	G4	A4	C5	D5

For your convenience there is a drawing of the drum with the placement of the tongues before each song in the music sheet.

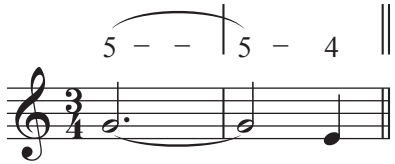




METRONOME MARKINGS: shows the tempo of a piece of music. It can be set using a metronome, which is a tool that can give a beat-per-minute tempo as a clicking sound or a pulse of light.

e.g. ♩ = 80

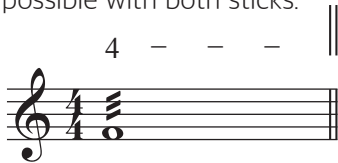
TIE: connects the heads of two notes of the same pitch, indicating that they are to be played as a single note with a duration equal to the sum of the individual notes' values.



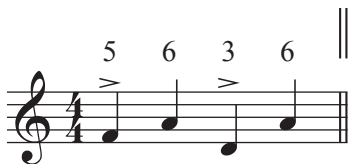
INTERVAL: play two notes together at same time.



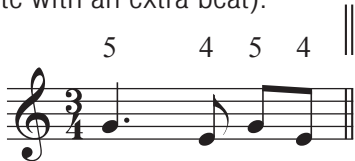
TREMOLO: the note is played as rapidly and continuously as possible with both sticks.



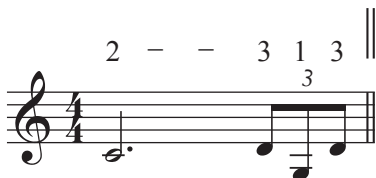
ACCENT: play the note louder than others.



DOTTED NOTE: a note with a small dot written after it. The dot increases the duration of the basic note by half of its original value (this added duration is equivalent to the time value of the basic note with an extra beat).



TRIPLET: a group of three notes played in the time of two. That is, three evenly spaced notes in the space of two notes of the same rhythmic value. The most common example is the eighth note triplet. An eighth note triplet rhythm is three notes played in the time usually taken to play 2 eighth notes.





Playing Tips

The best sound is achieved when the Idiopan rests on the display ring (included) or a soft surface, a cushion, or your lap. Do not play on a hard surface. The tongues are best activated by a quick tap of your fingertips or outer thumb knuckle. Bounce your fingers and thumbs off the tongues as quickly as possible. The sweet spot on the smaller tongues is near the bottom of the tongue. You can also use rubber-tipped mallets. For more tips and videos, see our blog at www.Idiopan.com

Care

Use a damp cloth to clean the powder coated finish. Avoid using cleaners and solvents. Use a rubber protectant to clean and protect the rubber guard. Do not remove the rubber guard.



www.Idiopan.com

© Copyright 2021. Mid-East Mfg. Inc.